

Salt Lake Community College

## Salt Lake Community College Library Digital Archives

---

College Fact Books Archives

SLCC History

---

2013

### Fact Book 2013-2014: Salt Lake Community College - Step Ahead

Salt Lake Community College

Follow this and additional works at: <https://libarchive.slcc.edu/factbooksarch>

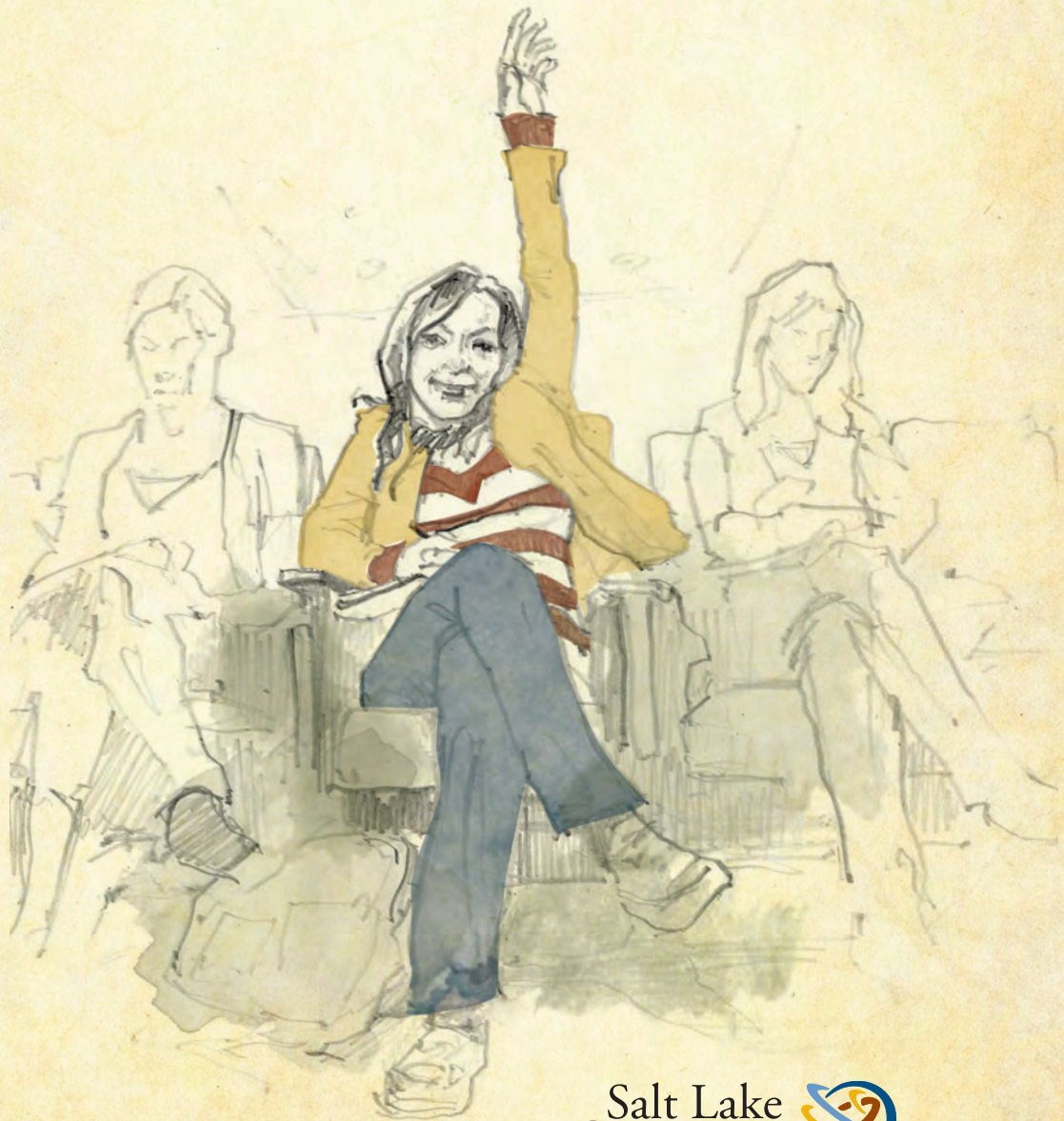


Part of the [Adult and Continuing Education Commons](#), [Educational Assessment, Evaluation, and Research Commons](#), [Institutional and Historical Commons](#), and the [Vocational Education Commons](#)

---

2013 / 2014

# FACT BOOK



## **ADMINISTRATION**

Deneece Huftalin, Ph.D.  
*Interim President*

Chris Picard, Ph.D.  
*Provost of Academic Affairs*

Nancy Singer, Ph.D.  
*Interim Vice President of Student Services*

Dennis R. Klaus  
*Vice President of Business Services*

Alison McFarlane  
*Vice President of Institutional Advancement*

Tim Sheehan  
*Vice President of Government and Community Relations*

## **BOARD OF TRUSTEES**

Gail Miller, *Chair*

Stanley B. Parrish, *Vice Chair*

Sanchaita Datta

Clint Ensign

Ashok Joshi, Ph.D.

David W. Lang

Patricia Richards

Richard R. Tranter

Jessica Fowler, *Student Association President*

Annie V. Schwemmer, *SLCC Alumni Association President*

# SALT LAKE COMMUNITY COLLEGE 2013-2014 FACT BOOK

<b>INTRODUCTION</b> .....	1
<b>SLCC Vision, Mission, and Strategic Priorities</b> .....	2
<b>TAB A. STUDENT ENROLLMENT</b>	
<b>STEP AHEAD – Student Enrollment</b> .....	3
<b>GRAPH 1</b> Salt Lake Community College Enrollment Trends .....	4
<b>TABLE 1</b> Salt Lake Community College Enrollment Trends .....	5
<b>TABLE 2A</b> Enrollment Summary - Summer Term .....	6
<b>TABLE 2</b> Enrollment by Academic Dept - Summer Term FTE's.....	7
<b>TABLE 3A</b> Enrollment Summary - Fall Semester.....	8
<b>TABLE 3</b> Enrollment by Academic Dept - Fall Semester FTE's.....	9
<b>TABLE 4A</b> Enrollment Summary - Spring Semester .....	10
<b>TABLE 4</b> Enrollment by Academic Dept – Spring Semester FTE's .....	11
<b>TABLE 5</b> 2012-2013 Enrollment by Summer Term - Fall & Spring End of Term (Annualized FTE's) .....	12
<b>TABLE 6</b> Enrollment by Academic Dept - Annualized FTE's .....	13
<b>GRAPH 7</b> Student Headcount Enrollment per Credit Hour .....	14
<b>TABLE 7</b> Student Headcount Enrollment per Credit Hour .....	15
<b>TABLE 8</b> Average Credit Hours Taken .....	16
<b>TABLE 9</b> Average Class Size – Fall 2009-2010 to 2013-2014 .....	17

**TABLE OF CONTENTS**  
**-Continued-**

**TAB B. STUDENT DEMOGRAPHICS**

<b>STEP AHEAD – DEMOGRAPHICS</b> .....	18
<b>TABLE 10</b> Student Enrollment by Majors.....	19
<b>TABLE 11</b> Student Enrollment by Majors and by Gender.....	20
<b>GRAPH 12</b> Where Students Live by Zip Code.....	21
<b>TABLE 12</b> Where Students Live by Zip Code.....	22
<b>TABLE 13</b> Student Distribution by Age and Gender.....	23
<b>TABLE 14</b> Student Distribution by Racial Background and Gender.....	24
<b>TABLE/ GRAPH 15</b> Male to Female Ratios.....	25
<b>TABLE/ GRAPH 16</b> Veterans Currently Eligible to Receive Benefits by Academic Classification.....	26
<b>TABLE 17</b> Average Age of Students.....	27

**TAB C. FACULTY/STAFF INFORMATION**

<b>STEP AHEAD – FACULTY/STAFF</b> .....	28
<b>TABLE 18</b> 2012-2013 Student/Faculty Ratios .....	29
<b>GRAPH 19</b> Student/Faculty & Student/Staff Ratios - Salt Lake Community College .....	30
<b>TABLE 19</b> Student/Faculty & Student/Staff Ratios - Salt Lake Community College .....	31
<b>TABLE 20</b> Salaried Personnel Budgeted FTE by Index Codes, by Gender, and by Faculty/Staff (Ed and General Indexes).....	32

**TABLE OF CONTENTS**  
**-Continued-**

**TAB C. FACULTY/STAFF INFORMATION**

**TABLE 21** Salaried Personnel Budgeted FTE by Index Codes, by Gender, and by Faculty/Staff (Service Enterprises/Auxiliary, Designated, Restricted, Agency Funds, and Skills Center Funded Indexes).....37

**TABLE 22** 2013-2014 Faculty Information including Tenure, Ranking, Educational Credentials and Male/Female Ratios .....39

**TAB D. DEGREES AND AWARDS**

**STEP AHEAD – DEGREES AND AWARDS** .....40

**TABLE 23** Distribution of Graduates by Degree and by Major .....41

**TABLE 24** Distribution of Graduates by Degree, by Major and by Gender .....42

**TAB E. FINANCIAL INFORMATION**

**STEP AHEAD – FINANCIAL INFORMATION** .....43

**TABLE 25** Current and Historical Tuition and Fee Schedule for Salt Lake Community College .....44

**TABLE 26** Cost Per Student Credit Hour by Department (Instructional Cost).....45

**TABLE 27** Cost Per FTE by Department (Instructional Cost) .....46

**TABLE 28** Costs Per FTE - Current and Adjusted for Inflation .....47

**TABLE 29** Financial Aid Information .....48

**TABLE/  
GRAPH 30** 2012-2013 Revenue Sources & Expenditures (E & G).....49

**TABLE/  
GRAPH 31** 2012-2013 Revenue Sources & Expenditures (Total) .....50

**TABLE OF CONTENTS**  
**-Continued-**

**TAB F. FACILITIES**

**STEP AHEAD – FACILITIES**.....51

**TABLE/** Building Profile Instructional Buildings  
**GRAPH 32** Taylorsville Redwood Campus .....52

**TABLE/** Building Profile  
**GRAPH 33** All Campus Locations.....53

**TAB G. STUDENT INPUT**

**STEP AHEAD – STUDENT INPUT**.....54

Explanation of Student Follow-Up Systems.....55

**TABLE 34** New Student Survey - 2012-2013 Summary .....56

**TABLE 35** Non-Returning Survey - 2012-2013 Summary.....58

**TABLE 36** Graduating Student Survey - 2012-2013 Summary.....60

**TAB H. NON-CREDIT ACTIVITY**

**STEP AHEAD – NON-CREDIT ACTIVITY**.....61

School of Applied Technology -  
Mission and Operating Characteristics .....62

**TABLE 37** School of Applied Technology Enrollment Trends.....63

**TABLE 38** School of Applied Technology Student Demographics.....64

**TABLE 39** School of Applied Technology -  
Distribution of Graduates by Program and by Gender.....65

**TABLE/** 2012-2013 School of Applied Technology Revenue Sources  
**GRAPH 40** & Expenditures (Total).....66

**TABLE 41** Economic Development and Business Partnerships, Division of  
Continuing Education, and the Institute of Public Safety - Student  
Enrollment Trends .....67

# INTRODUCTION

The purpose of the Fact Book is to provide official information about Salt Lake Community College (SLCC). Where possible, several years of historical data has been presented to provide perspective and to show trends.

It should be noted that given the complexities and size of SLCC and the multiple special databases that are being used, when interpreting data appearing in this book, care should be taken to ensure the database is correct for the purpose for which the data is used. The Fact Book represents the official numbers of Salt Lake Community College.

The organization of the data is as follows:

- Tab A.** Student Enrollment
- Tab B.** Student Demographics
- Tab C.** Faculty/Staff Information
- Tab D.** Degrees and Awards
- Tab E.** Financial Information
- Tab F.** Facilities
- Tab G.** Student Input
- Tab H.** Non-Credit

---

The Fact Book was prepared by Debbie Summers and Annette Lowe from the Office of Institutional Research.



# **SALT LAKE COMMUNITY COLLEGE**

## **VISION STATEMENT**

Salt Lake Community College will be the premier comprehensive community college in the nation.

## **MISSION STATEMENT**

Salt Lake Community College is a public, open-access, comprehensive community college committed to serving the broader community. Its mission is to provide quality higher education and lifelong learning to people of diverse cultures, abilities, and ages, and to serve the needs of community and government agencies, business, industry and employers.

The College fulfills its mission by:

- offering associate degrees, certificate programs, career and technical education, developmental education, transfer education, and workforce training to prepare individuals for career opportunities and an enriched lifetime of learning and growing;
- offering programs and student support services that provide students opportunities to acquire knowledge and critical thinking skills, develop self-confidence, experience personal growth, and value cultural enrichment;
- maintaining an environment committed to teaching and learning, collegiality, and the respectful and vigorous dialogue that nourishes active participation and service in a healthy democracy.

## **STRATEGIC PRIORITIES**

- Enhance Quality Higher Education
- Improve Student Access and Success
- Advance a Culture of Evidence & Accountability
- Strengthen Institutional Support
- Advance Partnerships/Relationships with the Community and Business

# **TAB A. STEP AHEAD**

## **STUDENT ENROLLMENT**

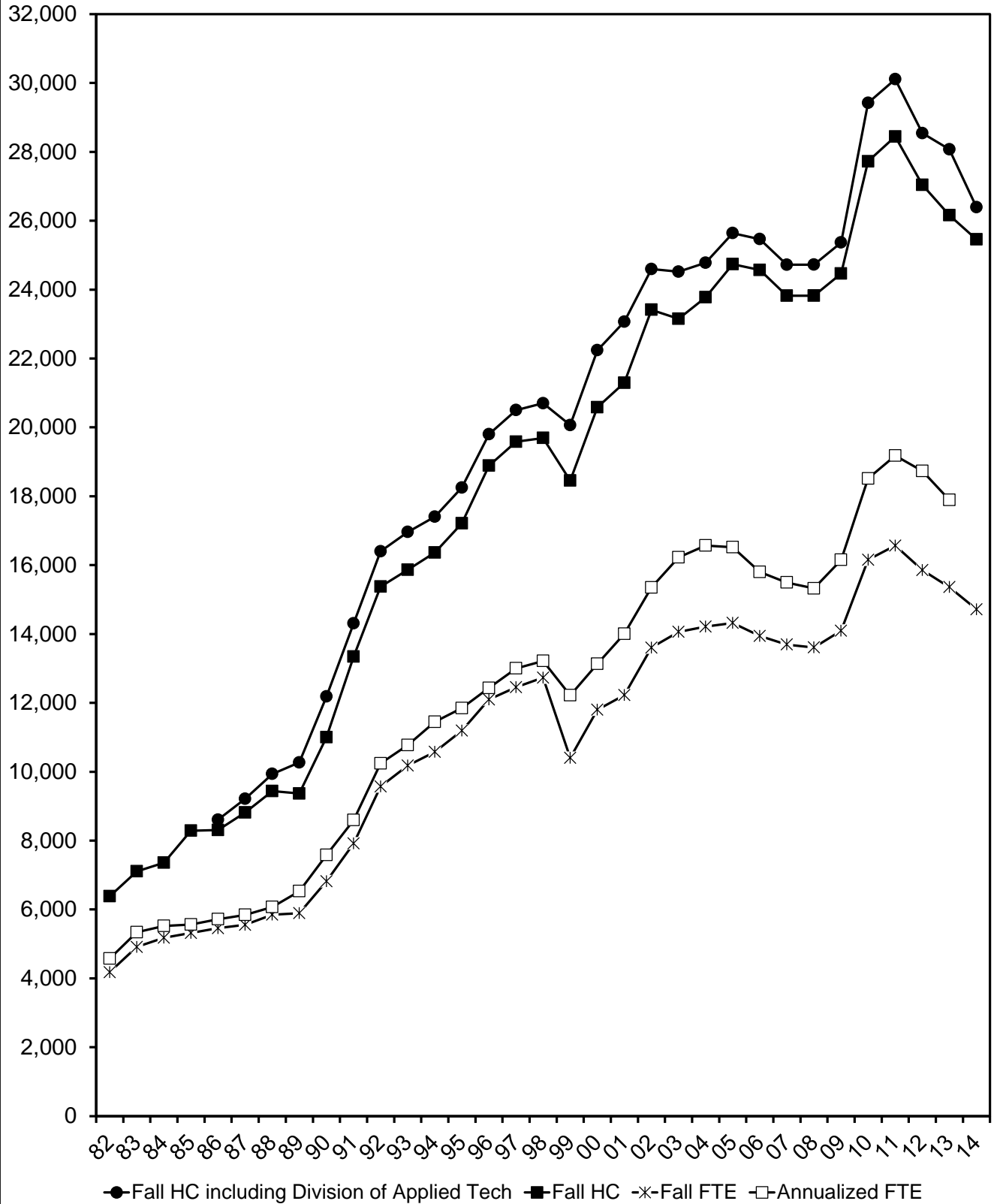
Salt Lake Community College has seen a slight decrease in both headcount and FTE (One Full-Time Equivalent equals 15 Credit Hours) throughout the 2013-2014 year. SLCC continues to maximize resources to teach and train as many students as possible while maintaining instructional quality.

### **Fast Facts (Budget Related Figures)**

- Fall 13-14 Headcount = 25,456
- Fall 13-14 FTE = 14,715
- Fall 13-14 Average Credit Hours taken = 8.67
- Fall 13-14 Average Class Size = 20.16

GRAPH 1.

## SALT LAKE COMMUNITY COLLEGE ENROLLMENT TRENDS



**TABLE 1.**  
**SALT LAKE COMMUNITY COLLEGE**  
**ENROLLMENT TRENDS**

YEARS	FALL HEADCOUNT THIRD WEEK			FALL FTE THIRD WEEK			AFTE'S	ANNUALIZED UNDUPLICATED HEADCOUNT
	RESIDENTS	NON- RESIDENTS	TOTAL	RESIDENTS	NON- RESIDENTS	TOTAL		
<b>ACTUALS</b>								
1981-82	6313	70	6383	4105	74	4179	4573	12240
1982-83	7045	63	7108	4854	58	4912	5341	13152
1983-84	7308	52	7360	5127	49	5176	5522	14459
1984-85	8244	45	8289	5280	37	5317	5563	13981
1985-86	8243	64	8307	5402	53	5455	5720	13712
1986-87	8756	59	8815	5511	43	5554	5845	13388
* 1987-88	9389	47	9436	5808	40	5848	6073	15297
1988-89	9294	73	9367	5840	53	5893	6530	15769
1989-90	10900	103	11003	6733	86	6819	7584	18843
1990-91	13028	316	13344	7745	173	7918	8596	22256
1991-92	15089	285	15374	9337	232	9569	10243	24794
1992-93	15558	304	15862	9937	243	10180	10775	25018
1993-94	15980	384	16364	10253	322	10575	11449	26365
1994-95	16765	447	17212	10816	378	11194	11846	27956
1995-96	18351	537	18888	11664	432	12096	12431	30643
1996-97	18948	634	19582	11964	488	12452	13002	32652
1997-98	19017	674	19691	12189	542	12731	13216	31816
** 1998-99	17816	637	18453	9949	452	10401	12220	29192
1999-00	19910	673	20583	11304	495	11799	13131	32845
2000-01	20593	701	21294	11718	509	12227	14004	34447
2001-02	22551	863	23414	13011	593	13604	15351	35225
2002-03	22552	602	23154	13689	373	14062	16223	35953
2003-04	22928	849	23777	13624	589	14213	16571	36021
2004-05	23384	1356	24740	13645	675	14320	16520	35757
2005-06	23518	1049	24567	13255	688	13943	15802	35703
2006-07	22671	1151	23822	12954	740	13694	15496	35007
2007-08	22425	1399	23824	12749	861	13610	15322	35410
2008-09	23088	1379	24467	13227	867	14094	16152	36384
2009-10	26510	1213	27723	15341	813	16154	18514	39690
2010-11	27244	1199	28443	15754	813	16567	19179	40348
2011-12	25937	1104	27041	15129	727	15856	18732	39246
2012-13	25122	1039	26161	14661	700	15361	17894	38072
2013-14	24325	1131	25456	13963	752	14715		

NOTE: \* 1987-88 to 2013-14 actuals are "Budget Related Totals", not the "Institution FTE and HC Totals"

\*\* Semester Conversion

SOURCE: 1981-82 to 1984-85 Utah Board of Regents' Recommended Operating Budgets  
1985-86 to 2013-14 Utah Board of Regents' Official Reports

**TABLE 2A.**  
**SUMMER TERM, 2013-2014**  
**OFFICIAL ENROLLMENT SUMMARY (BUDGET RELATED)**

	<u>AVERAGE</u>	<u>HC</u>	<u>%</u>	<u>FTE</u>	<u>%</u>
<b>2013-14 SUMMER TERM OFFICIAL #'s</b>		<b>12429</b>		<b>5306.0</b>	

2012-13 Summer Term Official #'s & % Completed		12666	98.1%	5491.0	96.6%
--	--	-------	-------	--------	-------

<u>AVERAGE CREDIT HOURS TAKEN</u>					
Resident	6.34	11824	95.1%	4997.0	94.2%
Non-Resident	7.66	605	4.9%	309.0	5.8%
<b>Total</b>	<b>6.40</b>	<b>12429</b>		<b>5306.0</b>	

<u>AVERAGE AGE OF STUDENTS *</u>					
Resident	27.58				
Non-Resident	27.61				

<u>MALE TO FEMALE RATIO</u>					
Male		6142	49.4%		
Female		6287	50.6%		
<b>Total</b>		<b>12429</b>			

<u>WHERE STUDENTS COME FROM</u>					
Salt Lake County		9108	71.9%		
Utah Excluding SL County		2955	23.3%		
US excluding Utah & Foreign Countries		603	4.8%		
<b>Total</b>		<b>12666</b>			

<u>LEVELS OF STUDENTS</u>					
First Time Freshmen		1271	10.0%		
Other Freshmen		1615	12.8%		
Sophomores		9780	77.2%		
<b>Total</b>		<b>12666</b>			

\* Age is not a completely accurate figure in that some students choose not to release this information.

**TABLE 2.**

**ENROLLMENT BY ACADEMIC DEPARTMENT - SUMMER TERM FTE'S**

<b>DEPARTMENT</b>	<b>09-10</b>	<b>10-11</b>	<b>11-12</b>	<b>12-13</b>	<b>13-14</b>
Accounting	62.3	82.7	99.4	85.7	88.0
Apprenticeship/Carpentry-Millwright	0.3				
Apprenticeship/Culinary Arts	0.4				
Apprenticeship/Electricity-Instrumentation	18.0	15.0	8.3	8.3	14.0
Apprenticeship/General	7.1	6.4	3.8	4.1	2.7
Apprenticeship/HVAC		0.3			
Apprenticeship/Plumbers-Pipefitters	7.3	2.0	0.7	4.3	3.0
Apprenticeship/Stage Hands		3.0	0.3		
Architectural Tech	8.7	14.0	12.5	13.3	12.8
Architectural Tech (Prison)	5.7				
ASL/Interpreting	19.7	16.3	12.4	13.1	13.5
Automotive Technician			14.0	12.4	11.6
Automotive Technician (Prison)	7.6				
Aviation Technology/Aviation Maintenance Tech	13.9	34.9	51.3	43.6	33.0
Aviation Technology/Professional Pilot	9.3	15.3	20.3	18.9	42.4
Barbering/Cosmetology	137.8	130.9	114.6	88.8	68.9
Biology	331.2	434.0	346.5	367.9	357.9
Biotechnology	1.7	5.3	0.7	0.8	1.1
Bldg Construction (Prison)	5.4				
Bldg Construction/Construction Mgt	5.4	8.9	12.1	11.5	2.3
Business Economics	109.4	140.8	121.6	119.0	107.6
Business Management	125.6	152.7	127.8	104.5	130.4
Chemistry	261.4	291.6	241.1	230.7	232.7
Communication	185.7	208.4	210.5	185.0	196.5
Computer Sciences & Information Systems					205.5
Computer Info Systems	165.6	218.8	246.8	155.9	
Computer Science	33.5	43.1	57.6	71.5	
Criminal Justice	115.9	154.2	173.3	115.0	104.6
Culinary Arts	31.7	52.3	36.9	40.9	25.5
Culinary Arts (Prison)	11.3				
Dental Hygiene	1.2				
Developmental Education	512.6	664.4	723.3		
Developmental Math				361.2	311.9
Developmental Reading				76.5	64.9
Developmental Writing				109.6	92.8
Diesel Systems Technology					5.6
Education	24.4	29.8	35.2	34.8	43.8
Electronics & Instrumentation Tech	17.6	6.2			
Engineering	37.3	61.1	74.3	71.4	64.5
Engineering Design/Drafting Tech	16.8	12.6	17.4	19.4	15.9
English	386.3	452.0	499.7	558.3	502.9
English Second Language	38.2	33.6	40.1	32.1	24.5
Environmental Technology	7.0	4.8			
Family & Human Studies	38.1	46.8	42.0	43.8	56.2
Fashion Institute	11.2	19.5	16.0	25.6	30.2
Finance and Credit	33.1	50.5	53.7	53.9	48.4
Fine Arts	172.7	205.2	228.0	185.2	193.6
Geosciences	71.9	91.5	91.7	96.8	94.7
Health Information Technology					8.5
Health & Lifetime Activities	237.3	298.9	357.9	268.8	253.0
History/Anthropology	131.8	156.2	203.2	159.2	162.6
Humanities	145.8	171.6	196.4	167.0	138.6
Interior Design	9.8	17.4	12.9	14.5	19.9
Languages	40.3	40.1	59.6	45.9	55.3
Learning Enhancement				121.5	98.0
Marketing	16.6	23.0	25.1	25.3	30.0
Mathematics	577.2	672.0	648.9	557.2	663.5
Medical Assistant	62.0	90.8	71.5	76.6	45.6
Mortuary Science				6.8	6.8
Nursing	22.7	27.4	19.3	25.1	20.2
Occupational Therapy Asst	3.6	3.3	4.1	4.9	3.6
Paralegal Studies	34.6	40.1	49.1	33.4	27.9
Physical Therapist Asst	15.3	14.7	14.0	14.0	22.4
Physics	94.0	99.0	88.1	85.7	86.8
Political Science	41.3	52.3	50.3	50.1	46.7
Psychology	152.0	166.4	197.7	178.0	146.2
Radiologic Technology	26.4	20.9	24.1	18.5	27.8
Social Work	15.6	16.6	21.2	12.4	17.4
Sociology	74.8	77.4	66.8	56.4	45.6
Surgical Technology	4.4	3.2	2.8	2.8	3.2
Surveying		2.8	1.8	0.6	0.3
Visual Art & Design	116.6	158.3	169.9	182.1	154.8
Welding	11.6	14.7	22.4	20.4	17.4
<b>Total</b>	<b>4884.0</b>	<b>5876.0</b>	<b>6041.0</b>	<b>5491.0</b>	<b>5306.0</b>

NOTE: Index code (ACBSSP) is included in the different departments.

SOURCE: Official End of Term Enrollment Summary by Departments, 2009-2010 to 2013-2014

**TABLE 3A.**  
**FALL SEMESTER, 2013-2014**  
**OFFICIAL ENROLLMENT SUMMARY (BUDGET RELATED)**

	<u>AVERAGE</u>	<u>HC</u>	<u>%</u>	<u>FTE</u>	<u>%</u>
<b>2013-14 FALL SEMESTER OFFICIAL #'s</b>		<b>25456</b>		<b>14715.0</b>	

2012-13 Fall Semester Official #'s & % Completed		26161	97.3%	15361.0	95.8%
--	--	-------	-------	---------	-------

<u>AVERAGE CREDIT HOURS TAKEN</u>					
Resident	8.61	24325	95.6%	13963.0	94.9%
Non-Resident	9.97	1131	4.4%	752.0	5.1%
<b>Total</b>	<b>8.67</b>	<b>25456</b>		<b>14715.0</b>	

<u>AVERAGE AGE OF STUDENTS *</u>	
Resident	26.50
Non-Resident	26.49

<u>MALE TO FEMALE RATIO</u>		
Male	12583	49.4%
Female	12873	50.6%
<b>Total</b>	<b>25456</b>	

<u>WHERE STUDENTS COME FROM</u>		
Salt Lake County	19017	74.7%
Utah Excluding SL County	5308	20.9%
US Excluding Utah/Foreign Countries	1131	4.4%
<b>Total</b>	<b>25456</b>	

<u>LEVELS OF STUDENTS</u>		
First Time Freshmen	3341	13.1%
Other Freshmen	5146	20.2%
Sophomores	16969	66.7%
<b>Total</b>	<b>25456</b>	

\* Age is not a completely accurate figure in that some students choose not to release this information.

**TABLE 3.**

**ENROLLMENT BY ACADEMIC DEPARTMENT - FALL SEMESTER FTE'S**

<b>DEPARTMENT</b>	<b>09-10</b>	<b>10-11</b>	<b>11-12</b>	<b>12-13</b>	<b>13-14</b>
Accounting	208.3	244.7	252.4	253.5	229.4
Apprenticeship/Carpentry-Millwright	8.3	3.0			
Apprenticeship/Culinary Arts	1.3				
Apprenticeship/Electricity-Instrumentation	102.9	76.3	69.3	62.3	62.0
Apprenticeship/General	17.3	16.2	6.9	7.4	1.5
Apprenticeship/HVAC	10.3	9.7	5.7	7.0	6.0
Apprenticeship/Lineman	25.7	16.7			
Apprenticeship/Plumbers-Pipefitters	160.5	117.5	84.1	76.7	86.3
Apprenticeship/Stage Hands	4.7	9.3	7.3	5.7	6.3
Architectural Tech	84.4	83.1	71.2	65.0	49.4
ASL/Interpreting	97.2	75.4	61.0	56.1	59.8
Automotive Collision Repair & Painting	29.6	25.6	30.7	28.0	24.8
Automotive Technician	109.7	123.9	111.2	102.6	90.0
Aviation Technology/Aviation Maintenance Tech	74.4	102.9	115.0	109.9	95.1
Aviation Technology/Professional Pilot	50.6	68.7	65.1	72.1	86.8
Barbering/Cosmetology	230.1	219.8	217.3	183.7	60.1
Biology	1022.4	1008.3	969.3	936.0	849.9
Biotechnology	16.5	22.3	31.9	24.6	27.5
Bldg Construction/Construction Mgt	53.0	64.1	57.4	47.1	45.7
Business Economics	249.0	295.6	257.6	252.6	256.5
Business Management	346.1	374.5	315.3	284.7	292.5
Chemistry	486.5	460.1	398.3	382.1	415.4
Communication	653.4	756.0	694.2	652.1	647.1
Computer Sciences & Information Systems					574.2
Computer Info Systems	645.9	718.8	684.5	425.4	
Computer Science	113.3	129.5	142.8	179.6	
Criminal Justice	255.3	310.4	340.4	279.1	281.9
Culinary Arts	88.0	127.0	106.6	95.4	84.6
Dental Hygiene	51.2	36.0	27.9	25.8	27.6
Developmental Education	1968.6	1847.2	1773.6		
Developmental Math				896.5	794.2
Developmental Reading				233.1	205.5
Developmental Writing				340.1	298.5
Diesel Systems Technology	30.4	44.6	40.1	40.1	54.0
Education	97.3	134.7	123.7	125.5	116.8
Electronics & Instrumentation Tech	25.4	6.8			
Engineering	106.3	122.3	150.4	146.3	139.7
Engineering Design/Drafting Tech	56.9	64.1	69.1	62.5	52.7
English	1142.7	869.3	891.9	1032.4	1139.0
English Second Language	88.3	70.7	75.5	88.3	80.8
Environmental Technology	18.5	11.2			
Family & Human Studies	238.1	292.1	201.7	170.7	185.2
Fashion Institute	86.7	99.6	116.5	113.2	114.3
Finance and Credit	141.9	162.6	144.5	143.5	146.9
Fine Arts	552.9	673.6	635.6	644.6	598.7
Geosciences	220.3	240.7	222.8	246.5	228.9
Health Information Technology					17.4
Health & Lifetime Activities	635.6	745.4	738.2	696.4	664.5
History/Anthropology	581.0	642.6	568.7	638.6	620.1
Humanities	486.2	499.6	559.3	531.1	430.9
Interior Design	58.7	73.3	80.3	56.5	52.3
Languages	250.0	269.0	275.3	261.8	221.2
Learning Enhancement				310.2	265.5
Marketing	83.0	109.2	95.2	112.2	87.5
Mathematics	1487.9	1423.8	1445.5	1400.1	1487.3
Medical Assistant	146.0	154.1	98.8	93.1	65.7
Mortuary Science				11.7	10.9
Non-Destructive Testing Tech	23.6	24.0	23.7	14.4	21.7
Nursing	236.1	225.3	232.9	222.3	232.8
Occupational Therapy Asst	35.6	38.7	39.2	43.4	41.9
Paralegal Studies	104.2	120.2	114.4	100.4	95.3
Physical Therapist Asst	63.4	59.2	61.4	60.3	61.7
Physics	255.2	251.0	238.5	248.1	249.6
Political Science	155.5	179.1	160.6	157.4	145.5
Psychology	576.3	561.1	527.7	529.6	508.2
Radiologic Technology	67.7	65.5	57.1	53.7	55.7
Social Work	71.9	99.0	92.1	84.0	95.0
Sociology	261.1	280.6	265.4	240.2	221.1
Surgical Technology	21.6	22.1	32.1	22.0	18.4
Surveying	26.2	21.8	23.6	15.3	17.3
Visual Art & Design	482.0	495.9	479.1	485.7	440.8
Welding	75.0	71.6	78.1	74.7	71.1
<b>COLLEGE GRAND TOTALS</b>	<b>16154.0</b>	<b>16567.0</b>	<b>15856.0</b>	<b>15361.0</b>	<b>14715.0</b>

NOTE: Index code (ACBSSP) is included in the different departments.

SOURCE: Official Third Week Enrollment Summary by Departments, 2009-2010 to 2013-2014



**TABLE 4A.**  
**SPRING SEMESTER, 2013-2014**  
**OFFICIAL ENROLLMENT SUMMARY (BUDGET RELATED)**

	<u>AVERAGE</u>	<u>HC</u>	<u>%</u>	<u>FTE</u>	<u>%</u>
<b>2013-14 SPRING SEMESTER OFFICIAL #'s</b>		<b>24953</b>		<b>14363.0</b>	

2012-13 Spring Semester Official #'s & % Completed		25873	96.4%	15065.0	95.3%
--	--	-------	-------	---------	-------

<u>AVERAGE CREDIT HOURS TAKEN</u>					
Resident	8.57	23973	96.1%	13695.0	95.3%
Non-Resident	10.22	980	3.9%	668.0	4.7%
<b>Total</b>	<b>8.63</b>	<b>24953</b>		<b>14363.0</b>	

<u>AVERAGE AGE OF STUDENTS *</u>	
Resident	26.82
Non-Resident	26.84

<u>MALE TO FEMALE RATIO</u>		
Male	12599	50.5%
Female	12354	49.5%
<b>Total</b>	<b>24953</b>	

<u>WHERE STUDENTS COME FROM</u>		
Salt Lake County	18848	75.6%
Utah Excluding SL County	5125	20.5%
US Excluding Utah & Foreign Countries	980	3.9%
<b>Total</b>	<b>24953</b>	

<u>LEVELS OF STUDENTS</u>		
First Time Freshmen	1732	6.9%
Other Freshmen	5733	23.0%
Sophomores	17488	70.1%
<b>Total</b>	<b>24953</b>	

\* Age is not a completely accurate figure in that some students choose not to release this information.

**TABLE 4.**

**ENROLLMENT BY ACADEMIC DEPARTMENT - SPRING SEMESTER FTE'S**

<b>DEPARTMENT</b>	<b>09-10</b>	<b>10-11</b>	<b>11-12</b>	<b>12-13</b>	<b>13-14</b>
Accounting	230.0	243.8	251.7	246.1	234.5
Apprenticeship/Carpentry-Millwright	35.3	27.3	20.0		
Apprenticeship/Electricity-Instrumentation	94.3	78.3	69.7	66.3	67.7
Apprenticeship/General	7.9	9.1	8.8	2.0	2.9
Apprenticeship/HVAC	8.7	7.3	6.0	5.0	4.7
Apprenticeship/Lineman	22.3	18.3	20.3		
Apprenticeship/Plumbers-Pipefitters	142.5	115.7	75.1	81.5	81.6
Apprenticeship/Stage Hands	5.0	6.3	5.7	4.0	6.0
Architectural Tech	75.7	73.9	53.3	63.9	49.4
ASL/Interpreting	102.6	75.3	66.3	63.9	64.0
Automotive Collision Repair & Painting	26.4	26.5	34.3	27.1	25.7
Automotive Technician	113.1	111.8	110.8	101.5	87.9
Aviation Technology/Aviation Maintenance Tech	91.5	115.9	136.4	119.5	113.4
Aviation Technology/Professional Pilot	54.0	64.3	56.4	100.1	60.3
Barbering/Cosmetology	255.8	225.3	200.0	149.0	31.1
Biology	1116.9	1037.8	1023.3	945.3	870.4
Biotechnology	27.7	25.1	26.5	27.4	20.7
Bldg Construction/Construction Mgt	50.6	58.7	50.7	46.9	48.7
Business Economics	257.4	269.2	243.8	229.8	246.2
Business Management	348.9	344.3	323.0	309.0	348.5
Chemistry	453.8	441.5	431.5	405.6	412.5
Communication	623.7	705.4	708.7	651.6	619.3
Computer Sciences & Information Systems					606.7
Computer Info Systems	624.3	625.8	593.5	338.5	
Computer Science	127.6	153.5	168.8	197.7	
Criminal Justice	282.0	319.9	278.7	273.6	278.2
Culinary Arts	101.2	109.3	97.9	82.1	72.0
Dental Hygiene	46.7	32.9	25.0	25.1	26.9
Developmental Education	1754.1	1667.8	1741.6		
Developmental Math				916.1	812.6
Developmental Reading				198.5	180.7
Developmental Writing				286.5	256.3
Diesel Systems Technology	28.4	41.5	44.1	36.2	46.9
Education	117.0	125.4	127.9	123.9	120.5
Electronics & Instrumentation Tech	15.9	7.9			
Engineering	114.8	146.5	164.8	149.2	158.4
Engineering Design/Drafting Tech	60.3	63.9	61.9	63.5	55.6
English	1155.8	941.7	1008.2	1141.9	1185.9
English Second Language	70.0	71.1	72.8	64.7	77.2
Environmental Technology	17.3	14.0			
Family & Human Studies	162.2	176.8	148.9	150.5	156.9
Fashion Institute	85.0	94.9	109.3	108.2	112.0
Finance and Credit	133.7	121.3	143.6	129.3	134.7
Fine Arts	572.2	684.6	674.4	637.4	567.0
Geosciences	223.3	245.5	264.9	253.5	245.9
Health Information Technology				22.1	23.9
Health & Lifetime Activities	693.9	772.7	705.1	662.9	660.5
History/Anthropology	585.1	640.4	648.8	599.6	565.4
Humanities	512.4	551.0	499.0	429.8	398.4
Interior Design	53.7	70.7	66.6	54.4	50.9
Languages	255.8	258.5	208.5	195.1	147.6
Learning Enhancement				266.1	241.5
Marketing	78.6	88.6	84.2	104.7	84.7
Mathematics	1511.4	1408.6	1428.1	1478.9	1477.5
Medical Assistant	145.6	112.1	117.7	93.3	63.1
Mortuary Science			9.3	13.5	14.5
Non-Destructive Testing Tech	22.3	16.2	16.0	23.2	21.7
Nursing	203.2	223.7	221.2	229.7	221.0
Occupational Therapy Asst	35.6	41.2	46.7	45.8	46.7
Paralegal Studies	104.4	109.7	104.6	93.1	85.4
Physical Therapist Asst	41.7	41.0	35.2	38.5	35.3
Physics	284.6	285.7	257.7	245.4	233.5
Political Science	152.2	157.8	154.7	167.5	132.7
Psychology	559.7	548.2	535.1	499.1	446.0
Radiologic Technology	61.7	65.0	58.6	58.8	54.1
Social Work	73.9	87.9	86.4	97.1	82.5
Sociology	237.2	261.8	246.6	200.6	207.4
Surgical Technology	12.8	11.2	12.0	9.6	10.4
Surveying	25.7	22.3	23.4	16.4	12.7
Visual Art & Design	482.6	481.0	523.4	526.1	483.5
Welding	73.0	71.3	77.5	71.8	72.2
<b>TOTAL</b>	<b>16043.0</b>	<b>16052.0</b>	<b>15815.0</b>	<b>15065.0</b>	<b>14363.0</b>

NOTE: Index Code (ACBSSP) is included in the different departments.

SOURCE: Official Third Week Enrollment Summary by Departments, 2009-2010 to 2013-2014

**TABLE 5.**

**2012-2013 ENROLLMENT BY ACADEMIC DEPARTMENT - ANNUALIZED FTE'S**

<b>DEPARTMENT</b>	<b>SUMMER END OF TERM 2012-2013</b>	<b>FALL END OF TERM 2012-2013</b>	<b>SPRING END OF TERM 2012-2013</b>	<b>ANNUALIZED FTE'S (AFTE'S) 2012-2013</b>
Accounting	85.7	250.6	244.3	290.2
Apprenticeship/Electricity-Instrumentation	8.3	62.0	66.3	68.3
Apprenticeship/General	4.1	7.8	2.1	7.0
Apprenticeship/HVAC		7.0	5.3	6.2
Apprenticeship/Plumbers-Pipefitters	4.3	77.8	81.5	81.8
Apprenticeship/Stage Hands		5.7	4.0	4.9
Architectural Tech	13.3	64.6	63.3	70.6
ASL/Interpreting	13.1	54.8	62.9	65.4
Automotive Collision Repair & Painting		26.4	27.1	26.8
Automotive Technician	12.4	101.2	96.7	105.2
Aviation Technology/Aviation Maintenance Tech	43.6	105.1	122.7	135.7
Aviation Technology/Professional Pilot	18.9	76.1	103.6	99.3
Barbering/Cosmetology	88.8	180.7	151.5	210.4
Biology	367.9	933.0	931.5	1116.1
Biotechnology	0.8	24.5	27.3	26.3
Bldg Construction/Construction Mgt	11.5	48.5	48.3	54.2
Business Economics	104.0	248.6	227.4	289.9
Business Management	104.5	281.5	306.4	346.1
Chemistry	230.7	384.2	399.6	507.2
Communication	185.0	656.6	647.4	744.5
Computer Info Systems	155.9	417.0	330.9	451.8
Computer Science	71.5	181.7	194.7	223.9
Criminal Justice	115.0	279.5	273.4	333.9
Culinary Arts	40.9	95.2	85.1	110.6
Dental Hygiene		25.8	25.1	25.5
Developmental Math	361.2	890.2	904.7	1078.0
Developmental Reading	76.5	230.7	192.3	249.8
Developmental Writing	109.6	332.8	281.3	361.9
Diesel Systems Technology		42.1	37.7	39.9
Education	34.8	125.1	123.6	141.8
Engineering	71.4	144.3	148.4	182.1
Engineering Design/Drafting Tech	19.4	63.0	64.0	73.2
English	558.3	1029.5	1131.9	1359.8
English Second Language	32.1	86.8	63.9	91.4
Family & Human Studies	43.8	194.4	149.1	193.7
Fashion Institute	25.6	111.2	108.5	122.7
Finance and Credit	68.9	140.7	128.3	169.0
Fine Arts	185.2	649.7	632.4	733.7
Geosciences	96.8	248.7	250.7	298.1
Health & Lifetime Activities	268.8	694.9	658.7	811.1
Health Information Technology			21.0	10.5
History/Anthropology	159.2	652.2	591.0	701.1
Humanities	167.0	525.5	427.2	559.9
Interior Design	14.5	54.9	54.0	61.7
Languages	45.9	255.5	193.9	247.7
Learning Enhancement	121.5	306.5	267.9	348.0
Marketing	25.3	107.8	104.2	118.7
Mathematics	557.2	1380.6	1464.3	1701.0
Medical Assistant	76.6	92.0	92.1	130.4
Mortuary Science	6.8	11.7	13.5	16.0
Non-Destructive Testing Tech		14.6	23.2	18.9
Nursing	25.1	220.3	229.5	237.4
Occupational Therapy Asst	4.9	42.7	46.2	46.9
Paralegal Studies	33.4	98.4	93.1	112.5
Physical Therapist Asst	14.0	59.1	38.2	55.7
Physics	85.7	246.3	242.2	287.1
Political Science	50.1	166.0	167.1	191.6
Psychology	178.0	523.4	493.9	597.7
Radiologic Technology	18.5	53.7	58.8	65.5
Short-Term Intensive Training		15.0	25.0	20.0
Social Work	12.4	82.8	96.7	96.0
Sociology	56.4	241.2	199.4	248.5
Surgical Technology	2.8	20.0	9.6	16.2
Surveying	0.6	14.6	17.1	16.2
Visual Art & Design	182.1	484.3	528.4	597.3
Welding	20.4	73.9	71.6	83.0
<b>COLLEGE GRAND TOTALS</b>	<b>5491.0</b>	<b>15323.0</b>	<b>14973.0</b>	<b>17893.5</b>

SOURCE: Official Enrollment Summary by Departments, Summer, Fall, & Spring End of Term, 2012-2013

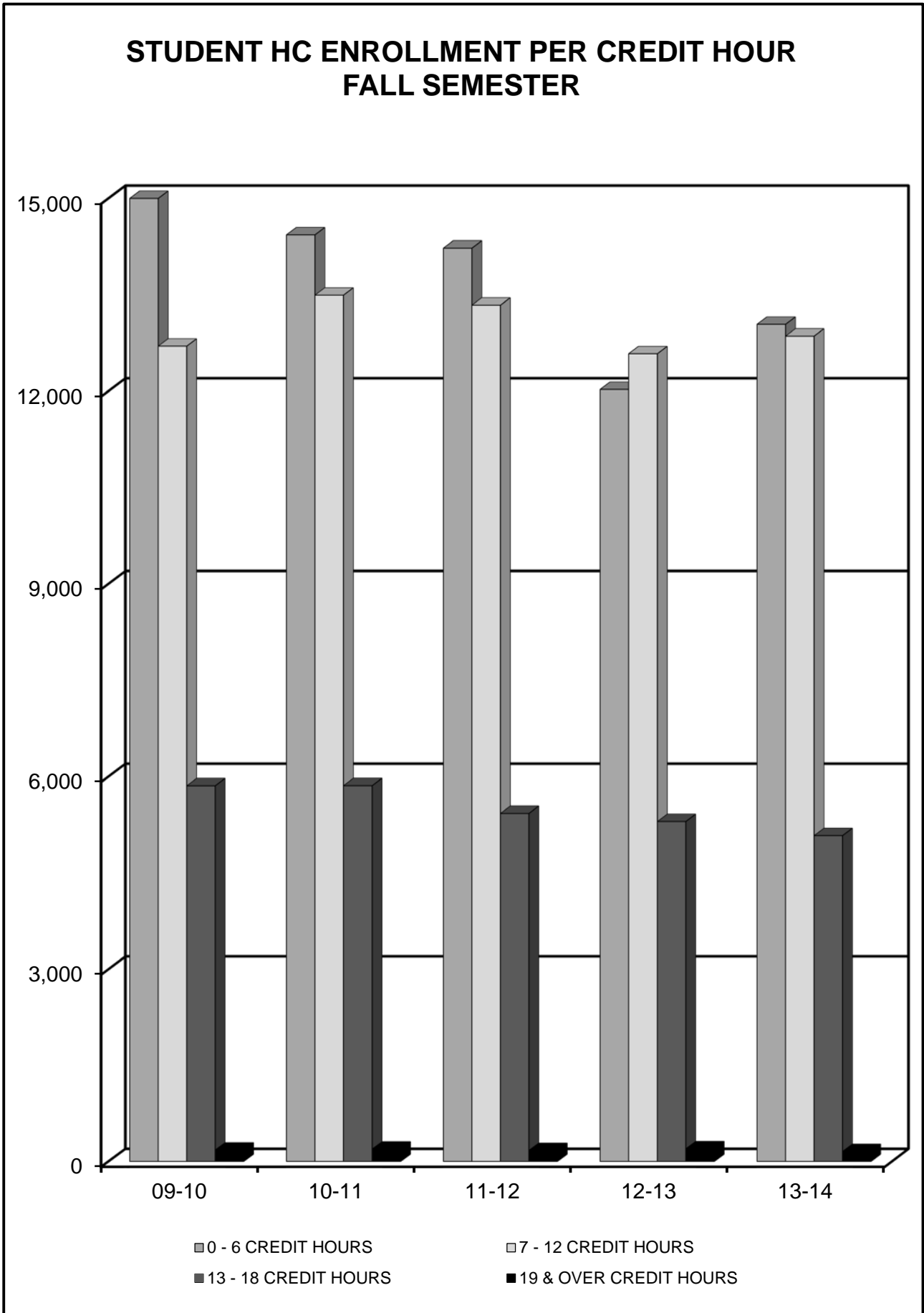
TABLE 6.

## ENROLLMENT BY ACADEMIC DEPARTMENT - ANNUALIZED FTE'S

DEPARTMENT	2008-2009	2009-2010	2010-2011	2011-2012	2012-2013
Accounting	232.9	247.7	282.8	298.7	290.2
Apprenticeship/Carpentry-Millwright	28.0	22.0	15.2	10.0	
Apprenticeship/Culinary Arts	76.1	1.0			
Apprenticeship/Electricity-Instrumentation	146.7	107.8	84.5	73.5	68.3
Apprenticeship/General	36.7	17.6	16.2	9.4	7.0
Apprenticeship/HVAC	12.7	9.5	9.2	6.3	6.2
Apprenticeship/Lineman		24.0	17.8	10.2	
Apprenticeship/Plumbers-Pipefitters	197.4	155.6	118.2	80.5	81.8
Apprenticeship/Stage Hands	5.4	5.9	9.5	7.3	4.9
Architectural Tech	79.4	83.5	84.1	67.8	70.6
Architectural Tech (Prison)	34.3	2.9			
ASL/Interpreting	89.0	112.0	83.5	69.2	65.4
Automotive Collision Repair & Painting	22.9	29.0	26.1	32.8	26.8
Automotive Technician	66.2	107.3	115.2	113.1	105.2
Automotive Technician (Prison)	33.4	3.8			
Aviation Technology/Aviation Maintenance Tech	66.3	91.3	128.8	151.7	135.7
Aviation Technology/Professional Pilot	42.6	57.2	73.6	70.9	99.3
Barbering/Cosmetology	421.8	309.2	287.1	264.7	210.4
Biology	984.4	1224.6	1230.8	1157.8	1116.1
Biotechnology	17.9	23.1	26.0	29.5	26.3
Bldg Construction/Construction Mgt	61.3	55.0	65.3	62.5	54.2
Bldg Construction (Prison)	79.6	2.7			
Business Economics	285.8	306.9	354.4	309.3	289.9
Business Management	399.5	408.7	435.6	379.9	346.1
Chemistry	540.5	597.3	591.1	532.0	507.2
Communication	625.0	731.8	828.5	804.1	744.5
Computer Info Systems	634.8	714.2	780.1	751.3	451.8
Computer Science	100.9	134.8	161.2	184.6	223.9
Criminal Justice	228.9	324.2	389.5	393.5	333.9
Culinary Arts		109.2	142.7	118.3	110.6
Culinary Arts (Prison)	47.7	5.7			
Dental Hygiene	46.8	50.1	34.5	26.1	25.5
Developmental Math					1078.0
Developmental Reading					249.8
Developmental Writing					361.9
Developmental Education	1656.0	2118.7	2078.6	2097.8	
Diesel Systems Technology	15.4	30.2	43.3	44.2	39.9
Education	80.5	118.5	143.6	142.4	141.8
Electronics & Instrumentation Tech	55.6	29.2	10.4		
Electronics (Prison)	30.9				
Engineering	107.7	129.3	164.3	193.4	182.1
Engineering Design/Drafting Tech	51.2	67.3	69.4	73.4	73.2
Engineering Design/Drafting Tech (Prison)	3.6				
English	1017.9	1331.3	1125.1	1197.1	1359.8
English Second Language	96.1	97.4	87.7	94.3	91.4
Environmental Technology	23.3	21.4	14.8		
Family & Human Studies	205.4	232.4	267.6	198.7	193.7
Fashion Institute	61.0	91.2	106.5	120.3	122.7
Finance and Credit	149.1	153.3	167.8	169.8	169.0
Fine Arts	563.9	653.0	779.3	765.8	733.7
Geosciences	214.3	259.0	289.1	289.0	298.1
Health & Lifetime Activities	675.0	781.5	903.0	896.5	811.1
Health Information Technology					10.5
History/Anthropology	577.9	647.4	713.8	702.8	701.1
Humanities	514.7	572.2	606.8	622.9	559.9
Interior Design	59.8	61.2	79.4	79.5	61.7
Languages	246.2	269.1	277.8	266.8	247.7
Learning Enhancement					348.0
Marketing	63.3	89.0	109.4	101.3	118.7
Mathematics	1484.5	1774.4	1739.9	1746.4	1701.0
Medical Assistant	117.2	176.6	181.6	143.0	130.4
Medical Lab Technology	0.5				
Mortuary Science				4.6	16.0
Non-Destructive Testing Tech	17.0	23.0	20.5	17.9	18.9
Nursing	228.9	232.9	237.2	235.0	237.4
Occupational Therapy Asst	39.1	37.7	41.2	48.5	46.9
Paralegal Studies	96.5	121.0	134.3	133.6	112.5
Physical Therapist Asst	52.9	59.4	56.7	52.4	55.7
Physics	275.6	317.3	316.1	291.8	287.1
Political Science	165.4	173.3	195.5	182.9	191.6
Psychology	521.5	640.6	636.3	623.4	597.7
Radiologic Technology	78.2	77.4	75.7	69.9	65.5
Short-Term Intensive Training	21.5	22.0	17.0	10.0	20.0
Social Work	70.8	80.5	101.7	100.0	96.0
Sociology	258.3	283.9	309.6	286.7	248.5
Surgical Technology	18.7	19.4	19.4	23.1	16.2
Surveying	31.0	26.4	23.9	23.6	16.2
Visual Art & Design	501.4	540.1	564.1	579.7	597.3
Visual Art & Design (Prison)	10.5				
Welding	48.3	79.9	79.1	88.5	83.0
<b>COLLEGE GRAND TOTALS</b>	<b>16151.5</b>	<b>18514.0</b>	<b>19179.0</b>	<b>18732.0</b>	<b>17893.5</b>

SOURCE: Official Enrollment Summary by Departments, 2008-2009 to 2012-2013

**GRAPH 7.**



**TABLE 7.**

**STUDENT HEADCOUNT ENROLLMENT PER CREDIT HOUR**

**FALL HEADCOUNT**

Credit Hours	2009-2010		2010-2011		2011-2012		2012-2013		2013-2014	
	HC	% of Total	HC	% of Total	HC	% of Total	HC	% of Total	HC	% of Total
0 - 3	6993	20.71%	6291	18.51%	6031	18.19%	4933	16.38%	4858	15.60%
4 - 6	8040	23.80%	8141	23.96%	8195	24.71%	7093	23.56%	8182	26.28%
7 - 9	6317	18.70%	6584	19.37%	6617	19.95%	6216	20.64%	6687	21.48%
10 - 12	6383	18.90%	6909	20.33%	6721	20.26%	6365	21.14%	6169	19.81%
13 - 15	4483	13.27%	4626	13.61%	4275	12.89%	4202	13.95%	4017	12.90%
16 - 18	1374	4.07%	1233	3.63%	1151	3.47%	1099	3.65%	1063	3.41%
19 - 21	175	0.52%	186	0.55%	163	0.49%	190	0.63%	155	0.50%
Over 21	9	0.03%	13	0.04%	14	0.04%	14	0.05%	6	0.02%
<b>Total</b>	<b>33774</b>		<b>33983</b>		<b>33167</b>		<b>30112</b>		<b>31137</b>	

NOTE: Totals = Institution Grand Totals

SOURCE: Utah Board of Regents' Official Reports, Fall Semester, 2009-2010 to 2013-2014

**TABLE 8.**

**SALT LAKE COMMUNITY COLLEGE  
AVERAGE CREDIT HOURS TAKEN**

<b>SUMMER TERM</b>	<b>RESIDENTS</b>	<b>NON-RESIDENTS</b>	<b>TOTAL</b>
1999-00	5.16	7.43	5.29
2000-01	5.69	7.37	5.78
2001-02	5.92	7.75	6.04
2002-03	6.26	7.33	6.32
2003-04	6.44	7.42	6.49
2004-05	6.47	7.56	6.53
2005-06	6.32	7.59	6.40
2006-07	6.22	7.38	6.29
2007-08	6.14	6.96	6.19
2008-09	6.22	7.32	6.30
2009-10	6.43	7.28	6.47
2010-11	6.67	7.61	6.72
2011-12	6.73	7.74	6.78
2012-13	6.44	7.84	6.50
2013-14	6.34	7.66	6.40

<b>FALL SEMESTER</b>			
1999-00	8.52	11.03	8.60
2000-01	8.54	10.89	8.61
2001-02	8.02	10.71	8.72
2002-03	9.10	9.29	9.11
2003-04	8.91	10.41	8.97
2004-05	8.75	7.47	8.68
2005-06	8.45	9.84	8.51
2006-07	8.57	9.64	8.62
2007-08	8.53	9.23	8.57
2008-09	8.59	9.43	8.64
2009-10	8.68	10.05	8.74
2010-11	8.67	10.17	8.74
2011-12	8.75	9.88	8.80
2012-13	8.75	10.11	8.81
2013-14	8.61	9.97	8.67

<b>SPRING SEMESTER</b>			
1999-00	8.20	10.94	8.28
2000-01	8.65	10.33	8.10
2001-02	8.71	9.85	8.75
2002-03	9.03	10.04	9.06
2003-04	8.81	10.19	8.86
2004-05	8.81	9.87	8.85
2005-06	8.56	9.85	8.61
2006-07	8.47	9.32	8.51
2007-08	8.45	9.18	8.49
2008-09	8.58	9.71	8.64
2009-10	8.79	9.84	8.83
2010-11	8.79	9.93	8.83
2011-12	8.73	10.03	8.78
2012-13	8.68	10.30	8.73
2013-14	8.57	10.22	8.63

SOURCE: Utah Board of Regents' Official Reports, 1999-2000 to 2013-2014

**TABLE 9.  
FALL 2009-2010 TO 2013-2014 AVERAGE CLASS SIZE**

<b>DEPARTMENT</b>	<b>2009-2010</b>	<b>2010-2011</b>	<b>2011-2012</b>	<b>2012-2013 ***</b>	<b>2013-2014 ***</b>	<b>Average</b>
Accounting	19.75	22.57	23.35	21.61	19.85	21.43
Apprenticeship/Carpentry-Millwright	8.33	9.00				8.67
Apprenticeship/Culinary Arts	1.00					1.00
Apprenticeship/Electricity-Instrumentation	11.88	15.27	13.87	14.54	11.81	13.47
Apprenticeship/General	3.81	9.00	6.00	6.00	11.00	7.16
Apprenticeship/HVAC	6.20	5.80	4.25	9.50	14.00	7.95
Apprenticeship/Lineman		2.17				2.17
Apprenticeship/Plumbers-Pipefitters	12.72	11.67	8.88	9.49	11.23	10.80
Apprenticeship/Stage Hands	8.50	7.00	7.33	5.67	6.67	7.03
Architectural Technology	17.17	17.00	14.78	15.55	12.10	15.32
ASL/Interpreting	12.47	11.33	10.57	10.85	11.60	11.36
Automotive Collision Repair & Painting	18.50	16.00	19.25	17.50	15.50	17.35
Automotive Technician	19.14	22.11	18.06	19.00	16.38	18.94
Aviation Technology/Aviation Maintenance Tech	11.38	16.75	17.85	17.92	15.76	15.93
Aviation Technology/Professional Pilot	14.47	13.34	12.96	15.26	13.92	13.99
Barbering/Cosmetology	17.92	16.77	16.19	13.73	8.92	14.71
Biology	26.44	25.99	24.94	23.77	23.81	24.99
Biotechnology	6.42	9.79	9.55	7.55	8.35	8.33
Bldg Construction/Construction Mgt	10.67	14.10	15.12	11.74	12.11	12.75
Business Economics	23.47	27.89	26.29	26.31	27.93	26.38
Business Management	19.44	21.28	18.99	17.05	18.38	19.03
Chemistry	25.42	25.84	22.71	22.94	23.31	24.04
Communication	21.46	23.12	22.14	20.44	20.08	21.45
Computer Sciences & Information Systems					20.78	20.78
Computer Info Systems	23.61	25.86	25.20	19.76		23.61
Computer Science	15.08	15.92	18.44	17.65		16.77
Criminal Justice	16.26	19.99	19.73	17.68	17.51	18.23
Culinary Arts	20.85	26.65	19.54	17.67	18.13	20.57
Dental Hygiene	27.69	19.38	15.62	14.62	15.38	18.54
Developmental Math				20.79	21.35	21.07
Developmental Reading				19.10	18.91	19.01
Developmental Writing				19.28	18.14	18.71
Developmental Education	23.00	20.75	20.88			21.54
Diesel Systems Technology	14.17	22.13	17.78	17.78	23.80	19.13
Education	23.27	27.08	27.08	27.42	24.64	25.90
Electronics & Instrumentation Tech **	7.59	3.75				5.67
Engineering	9.97	10.69	11.51	13.32	11.31	11.36
Engineering Design/Drafting Tech	13.32	13.52	14.47	13.59	11.16	13.21
English	23.32	21.86	21.88	22.18	20.57	21.96
English Second Language	20.18	14.92	17.50	21.60	21.78	19.20
Environmental Technology **	13.71	11.20				12.46
Family & Human Studies	15.79	17.92	15.82	24.37*	23.77*	19.53
Fashion Institute	19.26	19.03	18.38	14.56	13.93	17.03
Finance and Credit	22.03	23.71	23.68	24.90	27.11	24.29
Fine Arts	16.39	18.85	15.25	24.82	22.68	19.60
Geosciences	18.68	23.13	23.88	24.13	23.12	22.59
Health Information Technology					6.13	6.13
Health & Lifetime Activities	18.46	21.29	20.26	21.55	19.22	20.16
History/Anthropology	26.45	30.89	29.00	29.32	25.74	28.28
Humanities	28.06	29.39	29.48	27.71	27.57	28.44
Interior Design	14.10	16.05	16.42	13.38	12.85	14.56
Languages	18.34	19.47	19.51	19.27	17.49	18.82
Learning Enhancement				22.71	24.38	23.55
Marketing	13.14	18.78	17.60	19.09	17.04	17.13
Mathematics	29.44	28.97	29.16	27.06	26.04	28.13
Medical Assistant	22.20	22.26	19.10	20.38	19.05	20.60
Mortuary Science				11.50	10.67	11.09
Non-Destructive Testing Tech	23.29	13.75	18.75	13.25	24.33	18.67
Nursing	16.29	17.63	17.88	17.52	17.62	17.39
Occupational Therapy Asst	14.21	14.70	14.80	17.16	17.33	15.64
Paralegal Studies	16.55	16.67	16.26	15.15	13.94	15.71
Physical Therapist Asst	16.08	14.75	17.14	16.63	16.13	16.15
Physics	22.28	23.20	24.51	24.38	22.98	23.47
Political Science	26.60	30.43	30.00	30.27	24.30	28.32
Psychology	28.85	29.23	29.32	28.79	27.38	28.71
Radiologic Technology	24.94	23.88	21.19	20.67	19.00	21.94
Short-Term Intensive Training (Non-credit)	5.29	4.67	4.39	6.14	3.46	4.79
Social Work	23.12	27.11	28.59	24.72	23.00	25.31
Sociology	31.95	31.89	30.86	28.60	25.33	29.73
Surgical Technology	9.88	11.29	11.89	9.25	7.63	9.99
Surveying	11.08	10.25	12.18	6.85	7.14	9.50
Visual Art & Design	14.35	14.23	14.92	17.78	16.39	15.53
Welding	13.05	11.50	15.65	14.90	14.10	13.84
<b>COLLEGE AVERAGE CLASS SIZE</b>	<b>20.40</b>	<b>21.36</b>	<b>20.87</b>	<b>21.08</b>	<b>20.16</b>	<b>20.93</b>

NOTE: Index code (ACBSSP) is distributed throughout the appropriate index code/department.  
 Courses with "0" enrollment were excluded.  
 \* FHS 0010/0011 were excluded.  
 \*\* Program eliminated.  
 \*\*\* Cross-listed courses are combined.



## **TAB B. STEP AHEAD**

### **STUDENT DEMOGRAPHICS**

Salt Lake Community College served 31,137 credit students during Fall Semester 2013 (not including the School of Applied Technology).

Salt Lake Community College's Non-white population is the largest of all USHE institutions. One notable change in SLCC's demographics is an increase in female students attending the College. Since Fall Semester 2004-2005, the number of female students attending the College has increased by 7.6%.

#### **Fast Facts**

- Fall 13-14 Average Age = 26.50
- Fall 13-14 Non-white Population = 21.3%
- Fall 13-14 Female to Male Ratio = 1.02:1

**TABLE 10.**

**STUDENT ENROLLMENT BY MAJORS  
Fall Headcount (Credit Students)**

DEPARTMENT	09-10	10-11	11-12	12-13	13-14
Accounting	287	318	267	312	327
Air-Conditioning, Refrigeration & Heating	37	32	19	21	27
Apprenticeship (all)	764	601	498	439	447
Architectural Technology	229	227	207	185	157
ASL/Interpreting	131	139	119	106	121
Automotive Collision Repair & Painting	47	34	60	54	46
Automotive Technician	168	182	146	149	146
Aviation Technology/Aviation Maintenance Tech	106	123	150	139	127
Aviation Technology/Professional Pilot	188	224	237	253	265
Barbering/Cosmetology	365	345	330	227	107
Biology	309	374	410	466	518
Biotechnology	70	99	127	131	143
Broadcast Video/Audio Production	20	24	16	12	12
Building Construction/Construction Mgt (all)	258	226	169	130	124
Business	1563	1574	1785	1750	1669
Business Management	362	382	350	393	478
Chemistry	199	188	214	193	204
Communication (all)	190	281	246	322	375
Computer Sciences & Information Systems					1049
Computer Info Systems	298	332	311	311	
Computer Science	339	366	508	590	
Continuing Ed Programs	55	39	33	25	31
Criminal Justice	560	677	700	657	638
Culinary Arts	174	237	224	229	207
Dental Hygiene	57	40	33	29	28
Diesel Systems Technology	51	66	55	61	76
Economics	41	53	54	53	59
Education	554	507	571	587	628
Electronics & Instrumentation Tech	81	34	27	2	
Energy Management		31	30	23	12
Engineering (all)	646	724	757	867	975
Engineering Design/Drafting Tech	110	135	197	174	192
English	246	259	314	286	266
Environmental Technology	37	19	10	7	2
Family & Human Studies	65	69	133	129	102
Fashion Institute	86	111	138	175	191
Film Production Technician	71	96	111	142	113
Finance and Credit	74	71	65	66	71
Fitness Technician	80	112	102	93	108
General Studies *	17135	16429	14767	11622	14567
Geosciences	51	59	83	85	78
Health Information Technology					27
Health Sciences **	3326	3571	3458	3516	2711
History	123	129	140	142	163
Humanities	66	74	145	120	84
Interior Design	71	98	107	93	105
International Studies	83	72	85	56	33
Marketing Mgt	91	94	109	87	97
Mathematics	41	76	94	101	84
Medical Assistant	230	279	268	238	125
Medical Lab Technology	2	2	2		
Mortuary Science			1	52	35
Music	107	130	112	117	158
Non-Destructive Testing Tech	37	26	17	19	29
Nursing **	468	372	474	477	512
Occupational Therapy Asst	44	44	49	47	48
Para Education	12	41	29	24	17
Paralegal Studies	237	241	227	215	207
Physical Therapist Asst	57	51	50	51	51
Physics	43	50	63	68	68
Political Science	81	75	84	78	70
Psychology	429	479	517	495	555
Radiologic Technology	84	79	68	65	57
Social Sciences		1	1		
Social Work	224	278	329	341	342
Sociology	120	140	172	149	141
Surgical Technology	33	26	24	20	21
Surveying	52	46	40	34	32
Unknown	4	5			
Visual Art & Design (all)	590	555	682	797	576
Welding	72	74	79	70	103
<b>COLLEGE GRAND TOTALS</b>	<b>32831</b>				

NOTE: Due to the reporting procedures, the report equals \*IPEDS To

\* Due to the reporting procedures, concurrent enrollment stude

\*\* Health Sciences includes students with an AAS in a specific a  
to their formal admittance into those specific programs. Nursi  
Studies have found this report to be about 80% accurate.

SOURCE: Utah Board of Regents' Official Reports, Fall Semester, 2009-

**TABLE 11.**  
**STUDENT ENROLLMENT BY MAJORS AND BY GENDER**  
**Fall Headcount (Credit Students)**

Department	2009-10		2010-11		2011-12		2012-13		2013-14	
	Male	Female	Male	Female	Male	Female	Male	Female	Male	Female
Accounting	108	179	119	199	101	166	103	209	104	223
Air-Conditioning, Refrigeration & Heating	37	0	31	1	19	0	21	0	27	0
Apprenticeship (all)	745	19	584	17	484	14	430	9	439	8
Architectural Technology	183	46	191	36	171	36	144	41	117	40
ASL/Interpreting	14	117	15	124	14	105	15	91	23	98
Automotive Collision Repair & Painting	43	4	33	1	58	2	50	4	43	3
Automotive Technician	158	10	172	10	142	4	143	6	141	5
Aviation Technology/Aviation Maintenance Tech	104	2	117	6	143	7	127	12	117	10
Aviation Technology/Professional Pilot	166	22	202	22	218	19	232	21	237	28
Barbering/Cosmetology	14	351	25	320	20	310	15	212	6	101
Biology	158	151	220	154	219	191	226	240	234	284
Biotechnology	36	34	53	46	61	66	77	54	79	64
Broadcast Video/Audio Production	14	6	21	3	13	3	10	2	11	1
Building Construction/Construction Mgt (all)	244	14	216	10	161	8	119	11	116	8
Business	977	586	957	617	1096	689	1073	677	1013	656
Business Management	228	134	219	163	219	131	230	163	271	207
Chemistry	128	71	123	65	130	84	122	71	126	78
Communication (all)	97	93	152	129	111	135	165	157	207	168
Computer Sciences & Information Systems									910	139
Computer Info Systems	247	51	279	53	260	51	262	49		
Computer Science	311	28	328	38	460	48	528	62		
Continuing Ed Programs	14	41	15	24	16	17	8	17	9	22
Criminal Justice	354	206	416	261	432	268	397	260	355	283
Culinary Arts	91	83	130	107	120	104	101	128	89	118
Dental Hygiene	1	56	0	40	1	32	1	28	0	28
Diesel Systems Technology	50	1	64	2	54	1	59	2	74	2
Economics	31	10	43	10	45	9	44	9	41	18
Education	124	430	93	414	116	455	118	469	125	503
Electronics & Instrumentation Tech	77	4	31	3	26	1	2	0		
Energy Management			27	4	25	5	20	3	10	2
Engineering (all)	591	55	649	75	681	76	772	95	868	107
Engineering Design/Drafting Tech	92	18	117	18	179	18	159	15	175	17
English	80	166	100	159	110	204	88	198	95	171
Environmental Technology	24	13	14	5	7	3	6	1	1	1
Family & Human Studies	6	59	7	62	17	116	17	112	11	91
Fashion Institute	12	74	10	101	8	130	11	164	15	176
Film Production Technician	56	15	81	15	85	26	106	36	80	33
Finance and Credit	42	32	43	28	35	30	43	23	39	32
Fitness Technician	41	39	65	47	59	43	46	47	49	59
General Studies *	8403	8732	7907	8522	6984	7783	5565	6057	6612	7955
Geosciences	34	17	37	22	54	29	57	28	51	27
Health Information Technology									5	22
Health Sciences **	722	2604	864	2707	848	2610	875	2641	641	2070
History/Anthropology	76	47	79	50	74	66	79	63	80	83
Humanities	23	43	32	42	48	97	43	77	26	58
Interior Design	4	67	2	96	4	103	7	86	9	96
International Studies	47	36	37	35	46	39	31	25	21	12
Marketing Mgt	55	36	56	38	56	53	48	39	60	37
Mathematics	24	17	37	39	48	46	55	46	48	36
Medical Assistant	33	197	41	238	44	224	28	210	22	103
Medical Lab Technology	1	1	0	2	0	2				
Mortuary Science					0	1	17	35	14	21
Music	67	40	74	56	73	39	78	39	117	41
Non-Destructive Testing Tech	30	7	23	3	16	1	19	0	28	1
Nursing **	98	370	68	304	88	386	91	386	86	426
Occupational Therapy Asst	7	37	10	34	10	39	9	38	9	39
Para Education	3	9	8	33	7	22	5	19	2	15
Paralegal Studies	53	184	48	193	39	188	42	173	42	165
Physical Therapist Asst	14	43	9	42	10	40	11	40	9	42
Physics	36	7	41	9	51	12	59	9	54	14
Political Science	57	24	50	25	55	29	49	29	44	26
Psychology	146	283	145	334	159	358	165	330	178	377
Radiologic Technology	33	51	28	51	22	46	23	42	17	40
Social Sciences			0	1	0	1				
Social Work	44	180	80	198	89	240	85	256	84	258
Sociology	37	83	43	97	55	117	46	103	41	100
Surgical Technology	11	22	3	23	9	15	6	14	6	15
Surveying	50	2	43	3	37	3	32	2	30	2
Unknown	4	0	1	4						
Visual Art & Design (all)	308	282	266	289	346	336	414	383	284	292
Welding	70	2	72	2	74	5	66	4	95	8
<b>COLLEGE GRAND TOTALS</b>	<b>16188</b>	<b>16643</b>	<b>16066</b>	<b>16881</b>	<b>15462</b>	<b>16537</b>	<b>14095</b>	<b>14872</b>	<b>14972</b>	<b>16165</b>

NOTE: Due to the reporting procedures, the report equals "IPEDS Total" or credit students.

\* Due to the reporting procedures, concurrent enrollment students are in the report for third week, starting 2008-2009.

\*\* Health Sciences includes students with an AAS in a specific area earning an AS in Health Science, and students in all health-related programs prior to their formal admittance into those specific programs. Nursing numbers previously included all health science students and are now separately identified.

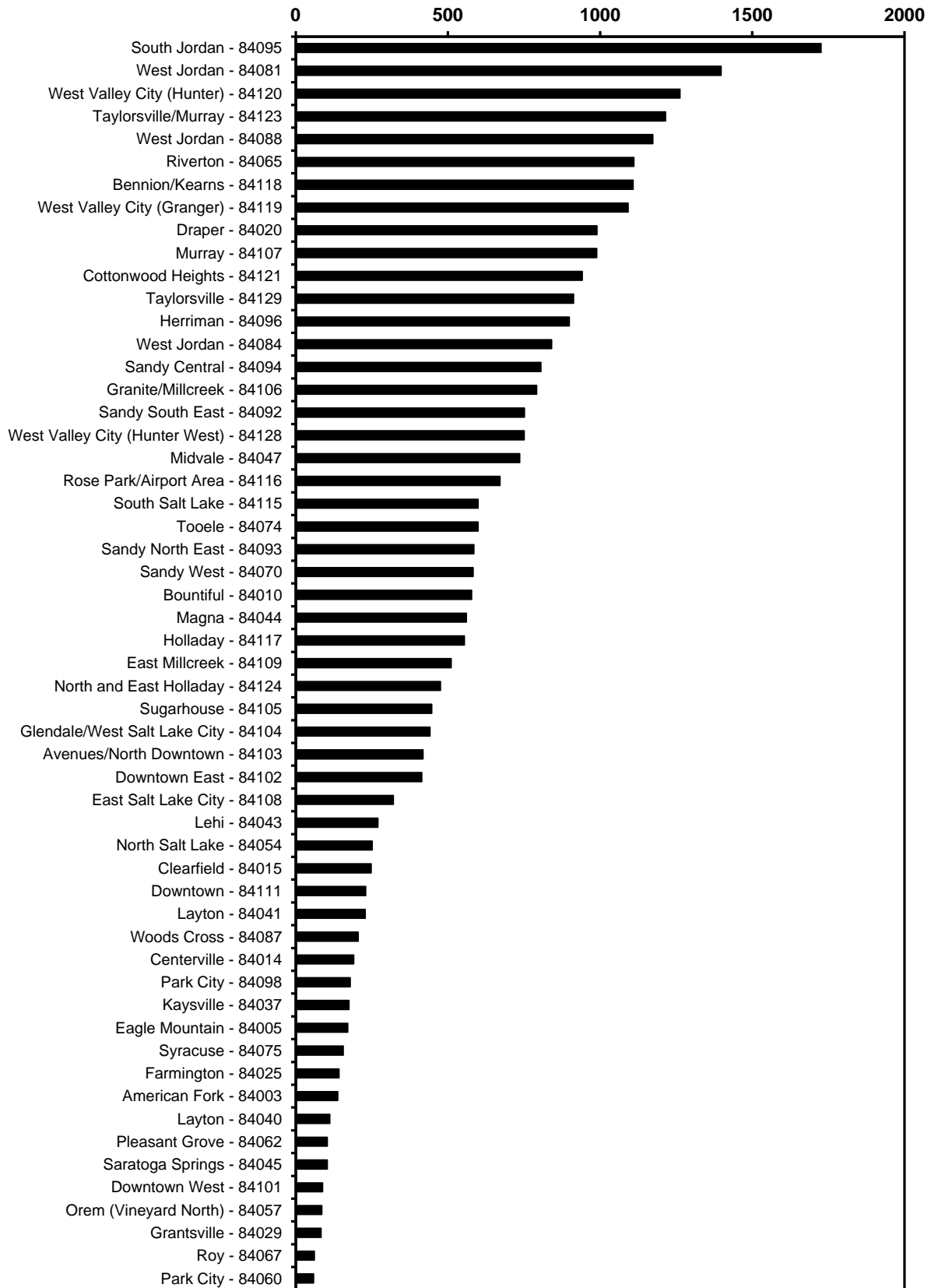
\*\*\* Students are combined with Apprenticeship/Electricity-Instrumentation.

Studies have found this report to be about 80% accurate.

SOURCE: Utah Board of Regents' Official Reports, Fall Semester, 2009-2010 to 2013-2014

GRAPH 12.

**WHERE STUDENTS LIVE BY ZIP CODE  
FALL 2013-2014 HEADCOUNT  
ZIP CODES WITH 50 OR MORE STUDENTS**



**TABLE 12.**

**WHERE STUDENTS LIVE BY ZIP CODE**

**Fall 2013-2014 Headcount  
Zip Codes with 50 or more students**

<b>ZIP CODE</b>	<b>LOCATION</b>	<b>NUMBER OF STUDENTS</b>	<b>PERCENT OF TOTAL</b>
84095	South Jordan	1,726	5.54%
84081	West Jordan	1,398	4.49%
84120	West Valley City (Hunter)	1,263	4.06%
84123	Taylorsville/Murray	1,215	3.90%
84088	West Jordan	1,173	3.77%
84065	Riverton	1,111	3.57%
84118	Bennion/Kearns	1,109	3.56%
84119	West Valley City (Granger)	1,092	3.51%
84020	Draper	990	3.18%
84107	Murray	989	3.18%
84121	Cottonwood Heights	942	3.03%
84129	Taylorsville	913	2.93%
84096	Herriman	899	2.89%
84084	West Jordan	841	2.70%
84094	Sandy Central	806	2.59%
84106	Granite/Millcreek	792	2.54%
84092	Sandy South East	752	2.42%
84128	West Valley City (Hunter West)	751	2.41%
84047	Midvale	736	2.36%
84116	Rose Park/Airport Area	671	2.15%
84074	Tooele	599	1.92%
84115	South Salt Lake	599	1.92%
84093	Sandy North East	585	1.88%
84070	Sandy West	583	1.87%
84010	Bountiful	578	1.86%
84044	Magna	561	1.80%
84117	Holladay	554	1.78%
84109	East Millcreek	511	1.64%
84124	North and East Holladay	476	1.53%
84105	Sugarhouse	447	1.44%
84104	Glendale/West Salt Lake City	441	1.42%
84103	Avenues/North Downtown	418	1.34%
84102	Downtown East	414	1.33%
84108	East Salt Lake City	321	1.03%
84043	Lehi	270	0.87%
84054	North Salt Lake	251	0.81%
84015	Clearfield	248	0.80%
84111	Downtown	230	0.74%
84041	Layton	228	0.73%
84087	Woods Cross	205	0.66%
84014	Centerville	191	0.61%
84098	Park City	179	0.57%
84037	Kaysville	175	0.56%
84005	Eagle Mountain	171	0.55%
84075	Syracuse	156	0.50%
84025	Farmington	142	0.46%
84003	American Fork	138	0.44%
84040	Layton	112	0.36%
84045	Saratoga Springs	104	0.33%
84062	Pleasant Grove	104	0.33%
84101	Downtown West	88	0.28%
84057	Orem (Vineyard North)	86	0.28%
84029	Grantsville	83	0.27%
84067	Roy	61	0.20%
84060	Park City	59	0.19%
Total of this list		30,537	98.07%
Total in other zip codes & Unknown		600	1.93%
<b>College Total, Fall Semester, 2013-2014</b>		<b>31,137</b>	<b>100.00%</b>

NOTE: The report equals "Institution Total"

SOURCE: Utah Board of Regents' Official Report, Fall Semester, 2013-2014

**TABLE 13.**  
**STUDENT DISTRIBUTION BY AGE AND GENDER**  
**Fall Headcount**

Number of Students						
A G E	GENDER	09-10 *	10-11 *	11-12 *	12-13 *	13-14 *
Under 18	Males	2412	2135	2067	452	2263
	Females	3321	3098	2969	731	3147
	<b>Total</b>	<b>5733 **</b>	<b>5233 **</b>	<b>5036 **</b>	<b>1183</b>	<b>5410 **</b>
18 - 19	Males	2346	2346	2133	1726	1955
	Females	2906	2973	2856	2269	2537
	<b>Total</b>	<b>5252</b>	<b>5319</b>	<b>4989</b>	<b>3995</b>	<b>4492</b>
20 - 21	Males	2206	2075	1970	1862	1979
	Females	2418	2459	2360	2648	2142
	<b>Total</b>	<b>4624</b>	<b>4534</b>	<b>4330</b>	<b>4510</b>	<b>4121</b>
22 - 24	Males	3271	3227	3028	3097	2736
	Females	2312	2360	2330	2574	2238
	<b>Total</b>	<b>5583</b>	<b>5587</b>	<b>5358</b>	<b>5671</b>	<b>4974</b>
25 - 29	Males	3160	3226	3056	3377	2925
	Females	2242	2399	2326	2615	2331
	<b>Total</b>	<b>5402</b>	<b>5625</b>	<b>5382</b>	<b>5992</b>	<b>5256</b>
30 - 34	Males	1357	1528	1587	1714	1472
	Females	1267	1345	1422	1550	1390
	<b>Total</b>	<b>2624</b>	<b>2873</b>	<b>3009</b>	<b>3264</b>	<b>2862</b>
35 - 39	Males	604	647	691	832	748
	Females	776	887	864	912	896
	<b>Total</b>	<b>1380</b>	<b>1534</b>	<b>1555</b>	<b>1744</b>	<b>1644</b>
Over 39	Males	810	864	907	1031	883
	Females	1379	1349	1399	1569	1475
	<b>Total</b>	<b>2189</b>	<b>2213</b>	<b>2306</b>	<b>2600</b>	<b>2358</b>
Unknown	Males	22	18	23	4	11
	Females	22	11	11	4	9
	<b>Total</b>	<b>44</b>	<b>29</b>	<b>34</b>	<b>8</b>	<b>20</b>
<b>Total</b>	<b>Males</b>	<b>16188</b>	<b>16066</b>	<b>15462</b>	<b>14095</b>	<b>14972</b>
	<b>Females</b>	<b>16643</b>	<b>16881</b>	<b>16537</b>	<b>14872</b>	<b>16165</b>
<b>Total Students</b>		<b>32831</b>	<b>32947</b>	<b>31999</b>	<b>28967</b>	<b>31137</b>

NOTE: \* Due to the reporting procedures, the report equals "IPEDS Total" or "Total Credit Students".

\*\* A higher number of concurrent enrollment students were captured in 3rd week.

SOURCE: Utah Board of Regents' Official Reports, Fall Semester, 2009-2010 to 2013-2014

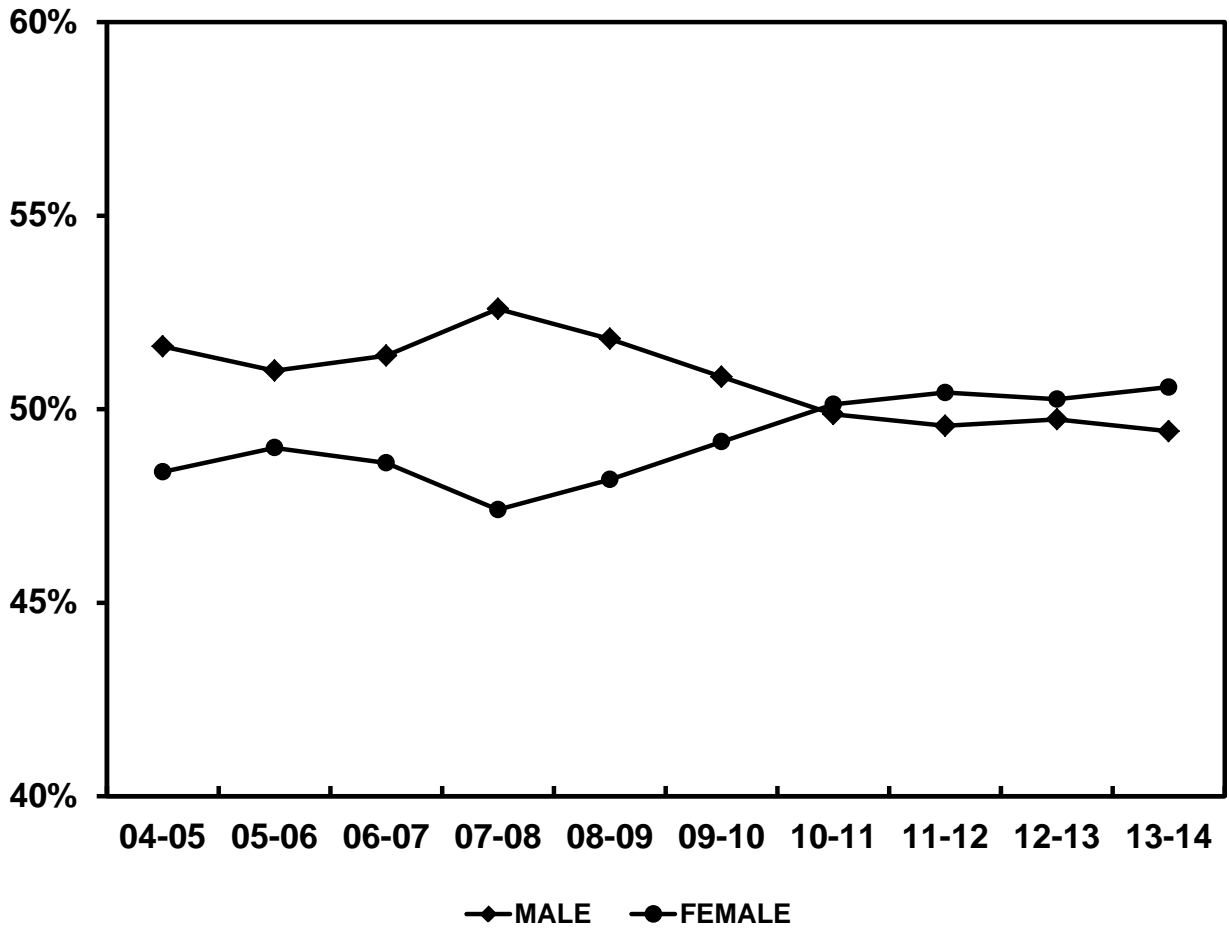
**TABLE 14.**  
**STUDENT DISTRIBUTION BY RACIAL BACKGROUND AND GENDER**  
**Fall Headcount**

		<b>Number of Students</b>				
<b>Race</b>	<b>Gender *</b>	<b>09-10 *</b>	<b>10-11 *</b>	<b>11-12 *</b>	<b>12-13 *</b>	<b>13-14 *</b>
Non-Resident/ Alien	Males	217	204	197	207	224
	Females	190	174	157	147	149
	<b>Total</b>	<b>407</b>	<b>378</b>	<b>354</b>	<b>354</b>	<b>373</b>
<b>% of Total</b>		<b>1.24%</b>	<b>1.15%</b>	<b>1.11%</b>	<b>1.22%</b>	<b>1.20%</b>
Black Non- Hispanic	Males	331	350	350	336	342
	Females	274	285	300	282	303
	<b>Total</b>	<b>605</b>	<b>635</b>	<b>650</b>	<b>618</b>	<b>645</b>
<b>% of Total</b>		<b>1.84%</b>	<b>1.93%</b>	<b>2.03%</b>	<b>2.13%</b>	<b>2.07%</b>
Amer. Indian/ Alaskan Nat	Males	157	131	113	99	122
	Females	209	204	164	141	140
	<b>Total</b>	<b>366</b>	<b>335</b>	<b>277</b>	<b>240</b>	<b>262</b>
<b>% of Total</b>		<b>1.11%</b>	<b>1.02%</b>	<b>0.87%</b>	<b>0.83%</b>	<b>0.84%</b>
Asian/Pac. Islander	Males	741	708	642	580	677
	Females	840	826	796	756	801
	<b>Total</b>	<b>1,581</b>	<b>1,534</b>	<b>1,438</b>	<b>1,336</b>	<b>1,478</b>
<b>% of Total</b>		<b>4.82%</b>	<b>4.66%</b>	<b>4.49%</b>	<b>4.61%</b>	<b>4.75%</b>
Hispanic	Males	1,338	1,433	1,558	1,608	1,919
	Females	1,509	1,667	1,854	1,958	2,317
	<b>Total</b>	<b>2,847</b>	<b>3,100</b>	<b>3,412</b>	<b>3,566</b>	<b>4,236</b>
<b>% of Total</b>		<b>8.67%</b>	<b>9.41%</b>	<b>10.66%</b>	<b>12.31%</b>	<b>13.60%</b>
White Non- Hispanic	Males	12,313	11,695	10,697	9,913	10,283
	Females	12,541	11,834	10,828	9,758	10,582
	<b>Total</b>	<b>24,854</b>	<b>23,529</b>	<b>21,525</b>	<b>19,671</b>	<b>20,865</b>
<b>% of Total</b>		<b>75.71%</b>	<b>71.41%</b>	<b>67.27%</b>	<b>67.92%</b>	<b>67.02%</b>
More Than One Race	Males			123	190	274
	Females			141	216	310
	<b>Total</b>			<b>264</b>	<b>406</b>	<b>584</b>
<b>% of Total</b>				<b>0.83%</b>	<b>1.40%</b>	<b>1.88%</b>
Race/Ethnicity Unknown	Males	1,091	1,545	1,782	1,162	1,131
	Females	1,080	1,891	2,297	1,614	1,563
	<b>Total</b>	<b>2,171</b>	<b>3,436</b>	<b>4,079</b>	<b>2,776</b>	<b>2,694</b>
<b>% of Total</b>		<b>6.61%</b>	<b>10.42%</b>	<b>12.74%</b>	<b>9.58%</b>	<b>8.65%</b>
College Totals	Males	16,188	16,066	15,462	14,095	14,972
	Females	16,643	16,881	16,537	14,872	16,165
	<b>Total</b>	<b>32,831</b>	<b>32,947</b>	<b>31,999</b>	<b>28,967</b>	<b>31,137</b>

NOTE: \* Due to the reporting procedures, the report equals "IPEDS Total" or "Total Credit Students".  
SOURCE: Utah Board of Regents' Official Reports, 2009-2010 to 2013-2014

**GRAPH/TABLE 15.**

**MALE TO FEMALE RATIOS  
FALL SEMESTER**



<b>MALE TO FEMALE RATIOS FALL SEMESTER</b>										
	<b>04-05</b>	<b>05-06</b>	<b>06-07</b>	<b>07-08</b>	<b>08-09</b>	<b>09-10</b>	<b>10-11</b>	<b>11-12</b>	<b>12-13</b>	<b>13-14</b>
MALE	12771	12528	12241	12530	12678	14094	14185	13404	13012	12583
FEMALE	11969	12039	11581	11294	11789	13629	14258	13637	13149	12873
TOTAL	24740	24567	23822	23824	24467	27723	28443	27041	26161	25456
MALE	51.62%	51.00%	51.39%	52.59%	51.82%	50.84%	49.87%	49.57%	49.74%	49.43%
FEMALE	48.38%	49.00%	48.61%	47.41%	48.18%	49.16%	50.13%	50.43%	50.26%	50.57%

NOTE: Totals equal "Total of All Budget Related", not the "IPEDS" or the "Institution Total".  
 SOURCE: Utah Board of Regents' Official Reports, 2004-2005 to 2013-2014

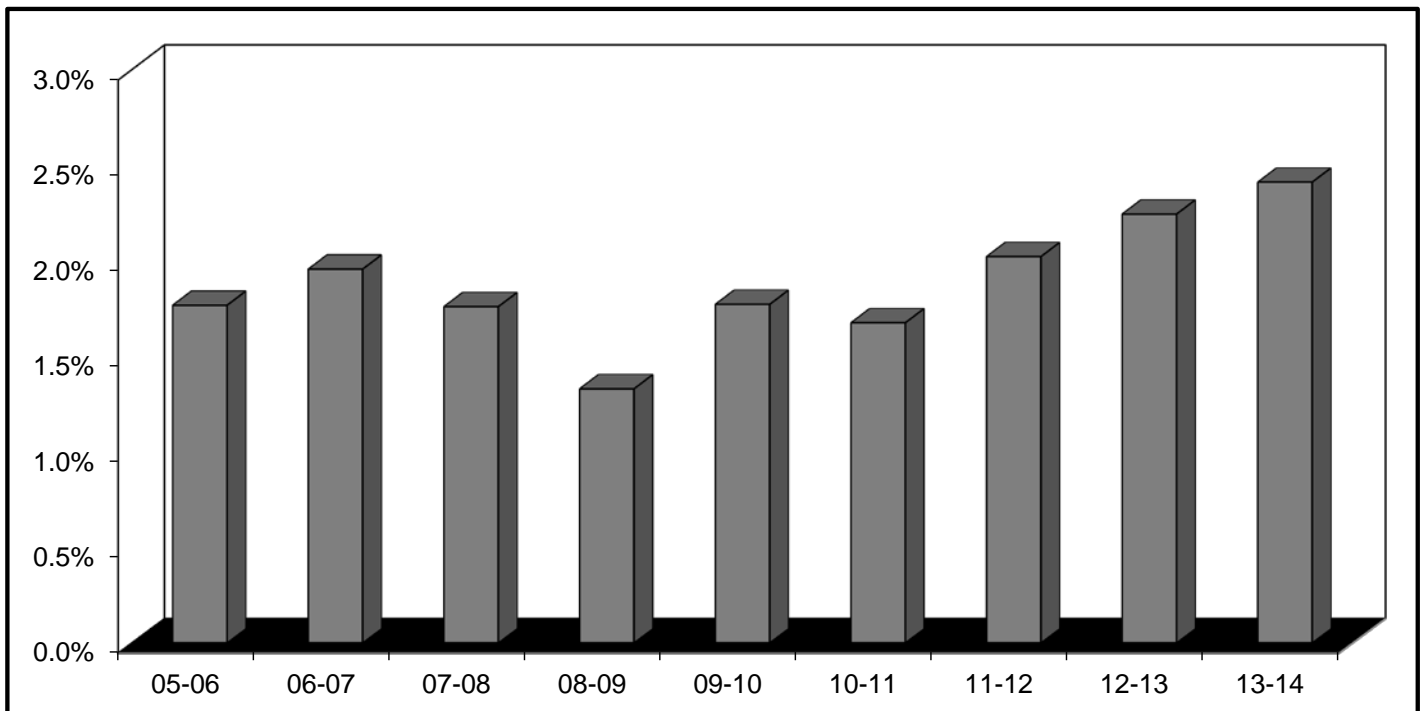


**TABLE/GRAPH 16.**

**VETERANS CURRENTLY ELIGIBLE TO RECEIVE BENEFITS  
BY ACADEMIC CLASSIFICATION  
FALL HEADCOUNT**

<b>Academic Classification</b>	<b>05-06</b>	<b>06-07</b>	<b>07-08</b>	<b>08-09</b>	<b>09-10</b>	<b>10-11</b>	<b>11-12</b>	<b>12-13</b>	<b>13-14</b>
Vocational or Technical	224	240	250	205	322	260	354	339	381
Non-Vocational or Non-Technical	228	252	193	193	277	310	317	337	370
<b>TOTAL</b>	<b>452</b>	<b>492</b>	<b>443</b>	<b>398</b>	<b>599</b>	<b>570</b>	<b>671</b>	<b>676</b>	<b>751</b>
All Other Students	25099	24637	24701	29468	33175	33413	32496	29436	30386
<b>GRAND TOTAL</b>	<b>25551</b>	<b>25129</b>	<b>25144</b>	<b>29866</b>	<b>33774</b>	<b>33983</b>	<b>33167</b>	<b>30112</b>	<b>31137</b>
<b>Percent Veterans</b>	<b>1.8%</b>	<b>2.0%</b>	<b>1.8%</b>	<b>1.3%</b>	<b>1.8%</b>	<b>1.7%</b>	<b>2.0%</b>	<b>2.2%</b>	<b>2.4%</b>

**VETERANS CURRENTLY ELIGIBLE TO RECEIVE BENEFITS  
FALL HEADCOUNT  
BY PERCENT**



NOTE: Totals = "Institution Total"

SOURCE: Utah Board of Regents' Official Reports, Fall Semester, 2005-2006 to 2013-2014

**TABLE 17.**

**SALT LAKE COMMUNITY COLLEGE  
AVERAGE AGE OF STUDENTS**

<b>SUMMER TERM</b>	<b>RESIDENTS</b>			<b>NON-RESIDENTS</b>		
	<b>MALE</b>	<b>FEMALE</b>	<b>TOTAL</b>	<b>MALE</b>	<b>FEMALE</b>	<b>TOTAL</b>
1999-00	26.96	26.21	26.59	27.03	26.29	26.63
2000-01	26.93	26.35	26.64	26.98	26.43	26.68
2001-02	27.70	26.87	27.31	27.58	26.86	27.29
2002-03	27.08	26.85	26.97	27.06	26.77	26.99
2003-04	26.94	27.06	27.03	26.85	27.12	27.05
2004-05	26.79	27.03	26.92	26.82	27.04	26.89
2005-06	26.90	26.80	26.86	26.87	26.71	26.84
2006-07	27.26	26.97	27.08	27.18	27.02	27.12
2007-08	27.20	26.99	26.98	27.16	26.99	27.01
2008-09	26.95	27.09	27.03	26.92	27.04	27.01
2009-10	26.88	27.04	26.96	26.84	27.08	26.99
2010-11	27.24	27.21	27.22	27.28	27.21	27.23
2011-12	27.53	27.50	27.52	27.49	27.54	27.50
2012-13	27.54	27.62	27.58	27.47	27.65	27.61
2013-14	27.37	27.66	27.51	27.35	27.77	27.49

<b>FALL SEMESTER</b>	<b>MALE</b>	<b>FEMALE</b>	<b>TOTAL</b>	<b>MALE</b>	<b>FEMALE</b>	<b>TOTAL</b>
1999-00	26.07	25.59	25.85	26.06	25.63	25.90
2000-01	25.48	25.39	25.44	25.55	25.34	25.49
2001-02	25.56	25.42	25.54	25.48	25.68	25.60
2002-03	25.76	25.86	25.81	25.72	25.85	25.79
2003-04	25.18	25.66	25.45	25.15	25.65	25.48
2004-05	25.63	26.14	25.93	25.67	26.11	25.91
2005-06	26.05	26.70	26.46	26.08	26.76	26.45
2006-07	25.92	26.32	26.19	25.90	26.27	26.18
2007-08	26.02	26.48	26.27	26.04	26.51	26.23
2008-09	25.51	25.42	25.43	25.52	25.37	25.41
2009-10	24.97	25.11	25.04	24.96	25.14	25.12
2010-11	25.39	25.30	25.35	25.43	25.29	25.31
2011-12	25.80	25.48	25.64	25.82	25.39	25.62
2012-13	27.35	27.13	27.23	27.30	27.03	27.24
2013-14	26.19	26.80	26.50	26.17	26.75	26.49

<b>SPRING SEMESTER</b>	<b>MALE</b>	<b>FEMALE</b>	<b>TOTAL</b>	<b>MALE</b>	<b>FEMALE</b>	<b>TOTAL</b>
1999-00	N/A	N/A	N/A	N/A	N/A	N/A
2000-01	25.85	25.78	25.81	25.65	25.90	25.85
2001-02	25.64	25.72	25.68	25.54	25.83	25.75
2002-03	24.80	24.92	24.85	24.76	24.92	24.81
2003-04	25.69	26.09	25.89	25.61	26.10	25.90
2004-05	25.74	26.35	26.06	25.76	26.38	26.05
2005-06	25.84	26.52	26.27	25.88	26.46	26.25
2006-07	26.01	26.58	26.32	26.06	26.60	26.33
2007-08	26.08	26.39	26.23	26.11	26.42	26.24
2008-09	25.99	26.14	26.05	25.96	26.13	26.07
2009-10	26.13	26.50	26.31	26.15	26.51	26.28
2010-11	26.14	26.41	26.28	26.16	26.48	26.31
2011-12	26.21	26.11	26.16	26.21	26.13	26.20
2012-13	26.11	26.34	26.22	26.10	26.34	26.27
2013-14	26.53	27.10	26.82	26.58	27.06	26.84

NOTE: Age is not a completely accurate figure, in that some students choose not to release this information.

SOURCE: Utah Board of Regents' Official Reports, 1999-2000 to 2013-2014

# **TAB C. STEP AHEAD**

## **FACULTY/STAFF**

Salt Lake Community College makes every effort to provide a quality higher education for all students. To do this, SLCC hires qualified and dedicated faculty and other professionals to provide the appropriate learning opportunities for students.

### **Fast Facts**

- 2012-2013 Full-time Equivalent Faculty = 891.4
- 2012-2013 Full-time Equivalent Staff = 598.8
- 2012-2013 Student to Faculty Ratio = 20.07
- % of Instruction Taught by Part-time Faculty = 60.3%

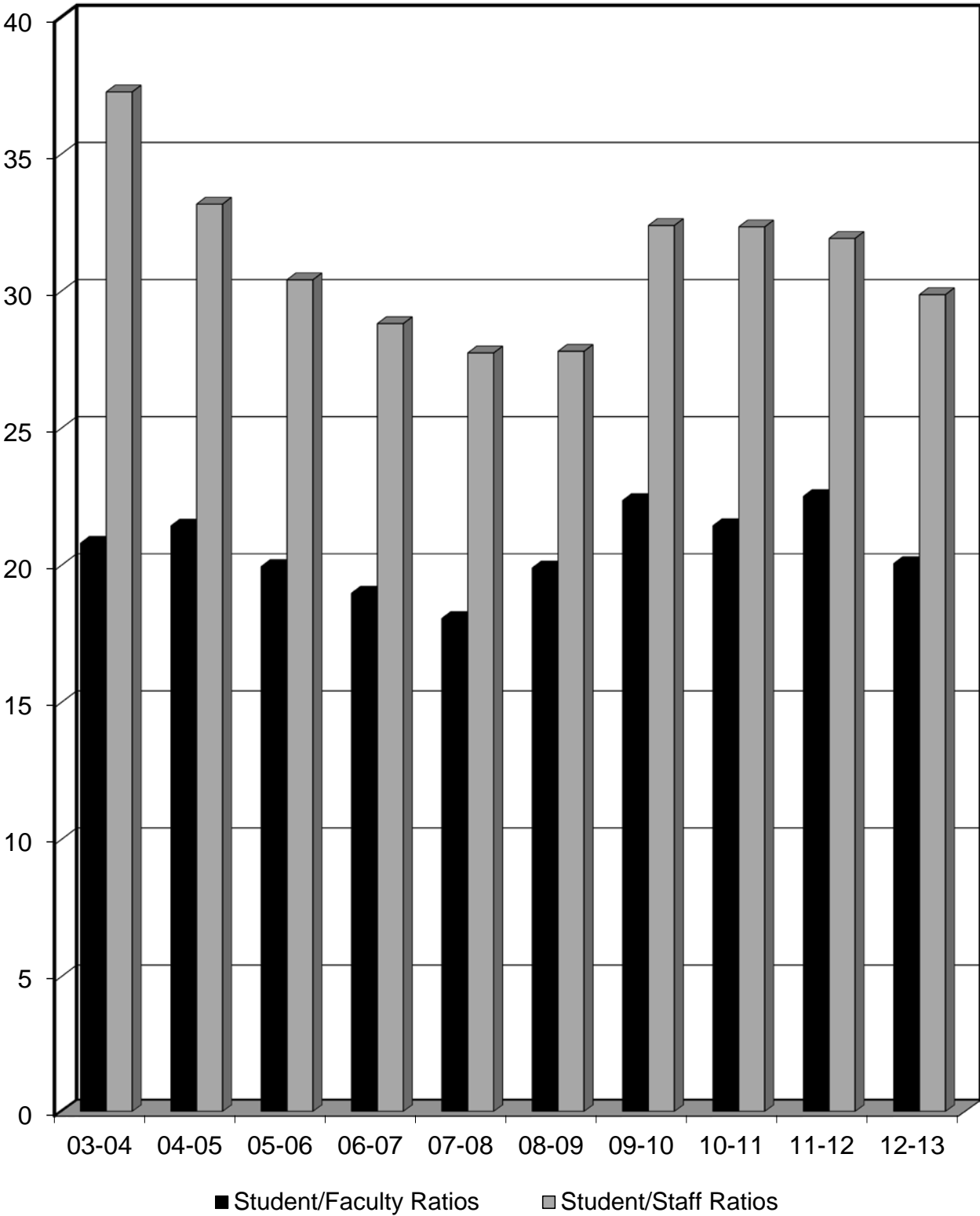
**TABLE 18.****2012-2013 STUDENT TO FACULTY RATIOS (ANNUALIZED)**

<b>DEPARTMENT</b>	<b>2012-2013</b>
Accounting	22.45
Apprenticeship (all)	13.99
Architectural Technology	11.54
ASL/Interpreting	13.20
Automotive Collision Repair & Painting	10.50
Automotive Technician	9.95
Aviation Technology/Aviation Maintenance Tech	12.99
Aviation Technology/Professional Pilot	13.42
Barbering/Cosmetology	5.73
Biology	24.17
Biotechnology	8.17
Bldg Construction/Construction Mgt	9.49
Business Economics	25.26
Business Management	16.96
Chemistry	21.95
Communication	22.78
Computer Info Systems	20.50
Computer Science	18.83
Criminal Justice	20.62
Culinary Arts	12.12
Dental Hygiene	3.19
Developmental Math	24.55
Developmental Reading	17.57
Developmental Writing	18.04
Diesel Systems Technology	11.90
Education	26.85
Engineering	10.20
Engineering Design/Drafting Tech	7.70
English	23.59
English Second Language	24.99
Family & Human Studies	28.64
Fashion Institute	16.08
Finance and Credit	23.80
Fine Arts	27.51
Geosciences	24.11
Health Information Technology	11.00
Health & Lifetime Activities	21.35
History/Anthropology	28.59
Humanities	30.20
Interior Design	14.03
Languages	18.91
Learning Enhancement	27.53
Marketing	19.01
Mathematics	28.63
Medical Assistant	15.89
Mortuary Science	11.05
Non-Destructive Testing Tech	13.38
Nursing	11.04
Occupational Therapy Asst	11.67
Paralegal Studies	15.23
Physical Therapist Asst	11.03
Physics	25.03
Political Science	28.72
Psychology	29.74
Radiologic Technology	15.18
Short-Term Intensive Training	25.74
Social Work	24.30
Sociology	28.45
Surgical Technology	9.10
Surveying	5.49
Visual Art & Design	13.14
Welding	9.62
<b>COLLEGE STUDENT TO FACULTY RATIO</b>	<b>20.07</b>

NOTE: A formula is used to determine the FTE equivalent for hourly faculty.

**GRAPH 19.**

**SALT LAKE COMMUNITY COLLEGE  
STUDENT TO FACULTY/STAFF RATIOS**



**TABLE 19.****STUDENT/FACULTY AND STUDENT/STAFF RATIOS****Education and General - Academic Year and Summer  
Counting Hourly Faculty**

<b>Year</b>	<b>Student/Faculty Ratio</b>	<b>Student/Staff Ratio</b>
1991-92	19.99	33.54
1992-93	20.10	32.57
1993-94	20.30	30.65
1994-95	17.63	29.70
1995-96	17.60	28.68
1996-97	18.22	29.83
1997-98	18.79	29.35
1998-99	18.17	26.40
1999-00	18.85	27.32
2000-01	19.00	28.47
2001-02	20.08	30.48
2002-03	21.35	35.73
2003-04	20.81	37.27
2004-05	21.44	33.18
2005-06	19.96	30.42
2006-07	18.99	28.82
2007-08	18.07	27.75
2008-09	19.91	27.81
2009-10	22.37	32.40
2010-11	21.45	32.35
2011-12	22.52	31.93
2012-13	20.07	29.88

**FTE STUDENTS, FACULTY AND STAFF**

<b>Year</b>	<b>Students</b>	<b>Faculty</b>	<b>Staff</b>
1991-92	10,243	512.4	305.4
1992-93	10,775	536.0	330.8
1993-94	11,449	564.1	373.5
1994-95	11,846	671.9	398.8
1995-96	12,431	706.3	433.44
1996-97	13,002	713.5	435.9
1997-98	13,216	703.5	450.3
1998-99	12,220	672.6	462.9
1999-00	13,131	696.6	480.7
2000-01	14,004	737.2	491.9
2001-02	15,351	764.5	503.6
2002-03	16,223	760.0	454.05
2003-04	16,571	796.3	444.6
2004-05	16,520	770.4	497.9
2005-06	15,802	791.8	519.4
2006-07	15,496	815.9	537.7
2007-08	15,322	847.8	552.1
2008-09	16,152	811.1	580.9
2009-10	18,514	827.6	571.4
2010-11	19,179	894.0	592.9
2011-12	18,732	831.7	586.7
2012-13	17,894	891.4	598.8

SOURCE: Legislative Analyst Information/Actual Reported Data

TABLE 20.

**SALARIED PERSONNEL: POSITION FTES  
BY DEPARTMENT/PROGRAM, BY GENDER, AND BY FACULTY/STAFF  
ED & GENERAL INDEXES (10000 Fund)  
(FILLED POSITIONS AS OF 10/31/13)**

	Full-time Faculty			Full-time Admin/Staff			All Full-time		
	Male	Female	Total	Male	Female	Total	Male	Female	Total
<b><u>President's Office</u></b>									
President's Office				3.00		3.00		3.00	3.00
<b><u>Provost for Academic Affairs</u></b>									
Provost Office				1.00	1.00	2.00	1.00	1.00	2.00
<b><u>Education &amp; Community Partnerships</u></b>									
Assoc. Provost Office				1.00	1.00	2.00	1.00	1.00	2.00
Curriculum Artic/Univ Ptrnshps					1.00	1.00		1.00	1.00
Dir. Curriculum, Sched, Reg Admin				1.00	1.00	2.00	1.00	1.00	2.00
Distance Education				4.00	6.00	10.00	4.00	6.00	10.00
Educational Initiatives				1.00		1.00	1.00		1.00
ePortfolio					1.00	1.00		1.00	1.00
Instructional Media				4.00	1.00	5.00	4.00	1.00	5.00
Learning Center					2.00	2.00		2.00	2.00
Regional Support				2.00	3.00	5.00	2.00	3.00	5.00
Scheduling					4.00	4.00		4.00	4.00
Student Success Initiatives					1.00	1.00		1.00	1.00
TICE Math 1060	1.00		1.00				1.00		1.00
<b><u>Asst. Provost for Institutional Effectiveness</u></b>									
Asst Provost's Office					2.00	2.00		2.00	2.00
Assessment, Accred & Planning				2.00		2.00	2.00		2.00
Center for Innovation & Prof Dvlpmt				1.00	2.00	3.00	1.00	2.00	3.00
Faculty Senate					1.00	1.00		1.00	1.00
Faculty Development Support				0.54	1.00	1.54	0.54	1.00	1.54
Institutional Research				1.00	4.00	5.00	1.00	4.00	5.00
<b><u>Learning Resources</u></b>									
Library/Jordan					1.00	1.00		1.00	1.00
Library/South				2.00		2.00	2.00		2.00
Library/Taylorsville Redwood				3.00	6.00	9.00	3.00	6.00	9.00
<b><u>School of Arts, Communication and New Media</u></b>									
Dean's Office				1.00	1.00	2.00	1.00	1.00	2.00
Div of Communication & Performing Arts				1.00	1.00	2.00	1.00	1.00	2.00
Communication*	5.26	4.75	10.01				5.26	4.75	10.01
Fine Arts	5.00	2.00	7.00				5.00	2.00	7.00
Div of Visual Art & Design				1.00	1.00	2.00	1.00	1.00	2.00
Architectural Technology*	2.75		2.75				2.75		2.75
Fashion Institute/Interior Design		1.00	1.00		1.00	1.00		2.00	2.00
Visual Art & Design*	8.75	5.00	13.75				8.75	5.00	13.75

	Full-time Faculty			Full-time Admin/Staff			All Full-time		
	Male	Female	Total	Male	Female	Total	Male	Female	Total
<b>School of Business</b>									
Dean's Office				1.00	1.00	2.00	1.00	1.00	2.00
Div of Accounting, Finance & Economics				1.00	1.00	2.00	1.00	1.00	2.00
Accounting	1.00	5.00	6.00		1.00	1.00	1.00	6.00	7.00
Business Economics	2.50	1.00	3.50				2.50	1.00	3.50
Finance & Credit	2.50		2.50				2.50		2.50
Div of Business Mgmt & Marketing					1.00	1.00		1.00	1.00
Business Management	7.00	2.00	9.00				7.00	2.00	9.00
Marketing	1.00	1.00	2.00				1.00	1.00	2.00
Div of Computer Sci & Infor Systems					2.00	2.00		2.00	2.00
Computer Information Systems	6.00	2.00	8.00				6.00	2.00	8.00
Computer Science	3.00	2.00	5.00				3.00	2.00	5.00
Paralegal Studies	2.00	1.00	3.00				2.00	1.00	3.00
Director, Culinary Arts				1.00		1.00	1.00		1.00
Culinary Arts	1.00	1.00	2.00				1.00	1.00	2.00
<b>School of Health Sciences</b>									
Dean's Office				1.00	3.00	4.00	1.00	3.00	4.00
Division of Allied Health					2.00	2.00		2.00	2.00
Medical Assistant	1.00	3.00	4.00				1.00	3.00	4.00
Mortuary Science	1.24		1.24				1.24		1.24
Occupational Therapy Assistant		2.00	2.00					2.00	2.00
Physical Therapist Assistant	1.00	1.00	2.00				1.00	1.00	2.00
Radiologic Technology	1.00	2.00	3.00				1.00	2.00	3.00
Surgical Technology	1.00	0.50	1.50				1.00	0.50	1.50
Dental Hygiene		2.00	2.00		3.00	3.00		5.00	5.00
Division of Nursing					2.27	2.27		2.27	2.27
Nursing	1.00	19.24	20.24				1.00	19.24	20.24
<b>School of Humanities and Social Sciences</b>									
Dean's Office				1.00	1.00	2.00	1.00	1.00	2.00
Div of Psychology & Sociology				1.00	1.00	2.00	1.00	1.00	2.00
Psychology	3.00	5.00	8.00				3.00	5.00	8.00
Sociology	1.00	2.00	3.00				1.00	2.00	3.00
English	5.00	17.00	22.00	1.00	1.00	2.00	6.00	18.00	24.00
ESL	2.00	1.00	3.00				2.00	1.00	3.00
Developmental Reading	3.00	4.00	7.00				3.00	4.00	7.00
Developmental Writing	2.00	6.00	8.00	1.00		1.00	3.00	6.00	9.00
Div of Family & Human Studies & Social Wk				1.00	1.00	2.00	1.00	1.00	2.00
Family & Human Studies	1.00	1.00	2.00		2.17	2.17	1.00	3.17	4.17
Learning Enhancement	3.00	1.00	4.00				3.00	1.00	4.00
Pre Teacher Education		2.00	2.00					2.00	2.00
Social Work	1.00	1.00	2.00				1.00	1.00	2.00
Div of History, Anthropology & Political Sci					2.00	2.00		2.00	2.00
History/Anthropology	5.00	3.00	8.00				5.00	3.00	8.00
Political Science	2.00	1.00	3.00				2.00	1.00	3.00
Dept of Humanities, Lang & Culture				1.00	1.00	2.00	1.00	1.00	2.00
ASL	2.00	1.00	3.00		1.00	1.00	2.00	2.00	4.00
Humanities	1.00	3.00	4.00				1.00	3.00	4.00
Languages	2.00	3.00	5.00	1.00		1.00	3.00	3.00	6.00



	Full-time Faculty			Full-time Admin/Staff			All Full-time		
	Male	Female	Total	Male	Female	Total	Male	Female	Total
<b>School of Science, Math and Engineering</b>									
Dean's Office				1.00	2.00	3.00	1.00	2.00	3.00
Biology	5.50	8.00	13.50	1.00	4.00	5.00	6.50	12.00	18.50
Biotechnology	1.00	1.00	2.00	3.50	2.80	6.30	4.50	3.80	8.30
Div of Natural Sciences				1.00	1.00	2.00	1.00	1.00	2.00
Chemistry	4.00	1.00	5.00		0.94	0.94	4.00	1.94	5.94
Engineering	7.00	2.00	9.00	2.00		2.00	9.00	2.00	11.00
Engineering Design/Draft Tech	3.00		3.00				3.00		3.00
Geosciences	3.00		3.00				3.00		3.00
Physics	2.00	1.00	3.00		0.94	0.94	2.00	1.94	3.94
Surveying	1.00		1.00				1.00		1.00
Health & Lifetime Activities	4.00	5.00	9.00		1.00	1.00	4.00	6.00	10.00
Developmental Math	6.00	6.00	12.00				6.00	6.00	12.00
Math	14.00	7.75	21.75	2.00	2.00	4.00	16.00	9.75	25.75
<b>School of Technical Specialties</b>									
Dean's Office				1.00	1.00	2.00	1.00	1.00	2.00
Div of Technical Specialties				1.00	1.00	2.00	1.00	1.00	2.00
Auto Collision Repair	2.00		2.00				2.00		2.00
Automotive Tech	7.00		7.00				7.00		7.00
Bldg Contr/Construction Mgmt	2.00		2.00	1.00		1.00	3.00		3.00
Diesel Systems Technology	2.00		2.00				2.00		2.00
Welding	1.00		1.00				1.00		1.00
Barbering/Cosmetology	1.00	3.00	4.00		2.00	2.00	1.00	5.00	6.00
Apprenticeship Office				1.00	1.00	2.00	1.00	1.00	2.00
Apprenticeship/General				1.00		1.00	1.00		1.00
Div of Aviation & Related Tech				1.00	1.00	2.00	1.00	1.00	2.00
Professional Pilot/Aviation Tech	2.00	1.00	3.00				2.00	1.00	3.00
Aviation Maintenance	5.00		5.00				5.00		5.00
Non-Destructive Test Technology	1.00		1.00				1.00		1.00
<b>Assoc. Provost of Economic Devlpmt &amp; Business Partnerships</b>									
Dean's Office					1.50	1.50		1.50	1.50
Business Employer Outreach				1.00	1.00	2.00	1.00	1.00	2.00
Small Bus Development Regional				0.50	1.00	1.50	0.50	1.00	1.50
Adult Training Education				1.00		1.00	1.00		1.00
<b>School of Applied Technology &amp; Professional Development</b>									
Dean's Office				0.50		0.50	0.50		0.50
Financial Services					1.42	1.42		1.42	1.42
Miller Conferencing				0.45		0.45	0.45		0.45
Continuing Education Admin					0.63	0.63		0.63	0.63
Computer Training Program				0.48		0.48	0.48		0.48
Paralegal Self Teaching					1.00	1.00		1.00	1.00
Misc. Self Sup Credit					1.00	1.00		1.00	1.00
Instit of Public Safety				0.92	0.53	1.45	0.92	0.53	1.45
Criminal Justice	3.00		3.00				3.00		3.00

	Full-time Faculty			Full-time Admin/Staff			All Full-time		
	Male	Female	Total	Male	Female	Total	Male	Female	Total
<b><u>Vice President of Business Services</u></b>									
Vice President's Office			1.00	1.00	2.00	1.00	1.00	2.00	
Accounting Systems				2.00	2.00		2.00	2.00	
Accounts Payable				6.00	6.00		6.00	6.00	
Budget Services			2.00	4.00	6.00	2.00	4.00	6.00	
Business Office			3.00	3.00	6.00	3.00	3.00	6.00	
Cashiering				4.00	4.00		4.00	4.00	
Collections				4.00	4.00		4.00	4.00	
EEO Administration				1.00	1.00		1.00	1.00	
Emerg Resp/Campus Security			2.00		2.00	2.00		2.00	
Human Resources*			5.00	8.75	13.75	5.00	8.75	13.75	
Inventory				1.00	1.00		1.00	1.00	
Payroll				4.00	4.00		4.00	4.00	
Purchasing				5.00	5.00		5.00	5.00	
Risk Management				2.00	2.00		2.00	2.00	
<b><u>Office of Information Technology</u></b>									
Academic Computing			7.13	2.00	9.13	7.13	2.00	9.13	
Administrative Computing Services			10.08	3.00	13.08	10.08	3.00	13.08	
Chief Information Officer Office			5.00	1.00	6.00	5.00	1.00	6.00	
Desktop Computing			6.00	2.00	8.00	6.00	2.00	8.00	
Help Desk			4.00		4.00	4.00		4.00	
Network Services			10.53	4.00	14.53	10.53	4.00	14.53	
Technical Services			2.00	1.00	3.00	2.00	1.00	3.00	
Web Applications			3.00		3.00	3.00		3.00	
<b><u>Facilities Services</u></b>									
Asst Vice Pres Facilities Services			2.00	1.00	3.00	2.00	1.00	3.00	
Arch/Proj Services			5.00	1.00	6.00	5.00	1.00	6.00	
Cabinetmakers			2.00		2.00	2.00		2.00	
Carpenters			9.00	0.33	9.33	9.00	0.33	9.33	
Custodial Services			34.00	13.00	47.00	34.00	13.00	47.00	
Distribution			3.00		3.00	3.00		3.00	
Electricians			4.00	0.33	4.33	4.00	0.33	4.33	
Environmental Health & Safety			1.00		1.00	1.00		1.00	
Facilities Support			3.00		3.00	3.00		3.00	
Grounds Maintenance			8.00		8.00	8.00		8.00	
HVAC Systems			20.00	0.34	20.34	20.00	0.34	20.34	
Interior Design				1.00	1.00		1.00	1.00	
Key Office			2.50	0.50	3.00	2.50	0.50	3.00	
Lighting			1.00		1.00	1.00		1.00	
Mail Services				2.00	2.00		2.00	2.00	
Moving Services			7.00		7.00	7.00		7.00	
Operation & Maintenance/Miller			1.41		1.41	1.41		1.41	
Painters			5.00		5.00	5.00		5.00	
Plumbers			4.00		4.00	4.00		4.00	
PM System			2.00		2.00	2.00		2.00	
Signage			1.50		1.50	1.50		1.50	
Space Inv/Energy				0.50	0.50		0.50	0.50	
Vehicle Maintenance			1.00	1.00	2.00	1.00	1.00	2.00	
<b><u>Vice President of Institutional Advancement</u></b>									
Vice President's Office				2.00	2.00		2.00	2.00	
Institutional Marketing			6.00	8.00	14.00	6.00	8.00	14.00	
Contact Center/Switchboard			1.00	6.00	7.00	1.00	6.00	7.00	
Development Office			2.00	4.44	6.44	2.00	4.44	6.44	
Events Coordinator				0.67	0.67		0.67	0.67	
Media Operations			4.00		4.00	4.00		4.00	
<b><u>Vice President for Government &amp; Community Relations</u></b>									
Vice President's Office				2.00	2.00		2.00	2.00	
Grants Office				1.00	1.00		1.00	1.00	
Internal Audit			3.00		3.00	3.00		3.00	

	Full-time Faculty			Full-time Admin/Staff			All Full-time		
	Male	Female	Total	Male	Female	Total	Male	Female	Total
<b><u>Vice President of Student Services</u></b>									
Vice President's Office				2.28		2.28		2.28	2.28
Athletics				1.00		1.00		1.00	1.00
Capitol Food Service				1.00		1.00		1.00	1.00
Grand Theatre				1.00		1.00	1.00		1.00
Asst Vice Pres of Student Plan & Support					2.00	2.00		2.00	2.00
Academic Advising				6.00	19.00	25.00	6.00	19.00	25.00
Academic Advising/Formal				1.00	2.00	3.00	1.00	2.00	3.00
Degree Works					1.00	1.00		1.00	1.00
Disability Resource Center				2.14	9.85	11.99	2.14	9.85	11.99
Hearing Impaired				0.36		0.36	0.36		0.36
First Year Experience				1.00	3.00	4.00	1.00	3.00	4.00
Prospective Students					4.75	4.75		4.75	4.75
Cooperative Education				2.00	3.75	5.75	2.00	3.75	5.75
Student Placement				1.00	1.00	2.00	1.00	1.00	2.00
Asst Vice Pres of Student Enrollment Services				1.00		1.00	1.00		1.00
Data Center					2.00	2.00		2.00	2.00
Enrollment Services					4.00	4.00		4.00	4.00
Financial Aid				2.00	19.87	21.87	2.00	19.87	21.87
International Students					2.75	2.75		2.75	2.75
Registration				3.00	9.00	12.00	3.00	9.00	12.00
Student Services - North					1.00	1.00		1.00	1.00
Student Services - South					3.00	3.00		3.00	3.00
Testing Services					5.00	5.00		5.00	5.00
Veterans Services					2.00	2.00		2.00	2.00
Asst Vice Pres of Student Life & Dean of Students				1.53	1.00	2.53	1.53	1.00	2.53
Health & Wellness					1.89	1.89		1.89	1.89
Multi-Cultural					2.00	2.00		2.00	2.00
Community Service				0.57	2.35	2.92	0.57	2.35	2.92

<b>COLLEGE WIDE SUMMARY</b>									
	Full-time Faculty			Full-time Admin/Staff			All Full-time		
	Male	Female	Total	Male	Female	Total	Male	Female	Total
<b>Totals</b>	<b>164.50</b>	<b>144.24</b>	<b>308.74</b>	<b>274.64</b>	<b>311.55</b>	<b>586.19</b>	<b>439.14</b>	<b>455.79</b>	<b>894.93</b>

Prepared by: Arlene Asay, Budget Office  
 \*Reduced FTE due to sabbatical leave

TABLE 21.

**SALARIED PERSONNEL: POSITION FTE'S  
BY DEPARTMENT/PROGRAM, BY GENDER, AND BY FACULTY/STAFF  
SERVICE ENTERPRISES, AUXILIARY, DESIGNATED, RESTRICTED  
& DIVISION OF APPLIED TECHNOLOGY INDEXES  
(FILLED POSITIONS AS OF 10/31/13)**

	Full-time Faculty			Full-time Admin/Staff			All Full-time		
	Male	Female	Total	Male	Female	Total	Male	Female	Total
<b><u>Education &amp; Community Partnerships</u></b>									
Concurrent Enrollment				2.00	7.00	9.00	2.00	7.00	9.00
eLearning & Instr Sup/Testing Ctr				1.00	5.00	6.00	1.00	5.00	6.00
Utah WERKS				1.00		1.00	1.00		1.00
<b><u>Asst. Provost for Institutional Effectiveness</u></b>									
Curriculum Development				0.46		0.46	0.46		0.46
<b><u>School of Arts, Communication and New Media</u></b>									
Digital Arts	2.00		2.00	1.00	1.00	2.00	3.00	1.00	4.00
Media Control					1.00	1.00		1.00	1.00
<b><u>School of Health Sciences</u></b>									
Nursing Partnerships		4.00	4.00		0.73	0.73		4.73	4.73
Surgical Technology		0.50	0.50					0.50	0.50
DOL HIT				1.00		1.00	1.00		1.00
<b><u>School of Humanities and Social Sciences</u></b>									
Eccles Lab School					0.71	0.71		0.71	0.71
<b><u>School of Science, Math and Engineering</u></b>									
Biology	0.50		0.50				0.50		0.50
Biotechnology				0.50	2.20	2.70	0.50	2.20	2.70
NISGTC TAACCT				1.00	1.00	2.00	1.00	1.00	2.00
<b><u>School of Technical Specialties</u></b>									
NDT Training	1.00		1.00				1.00		1.00
<b><u>School of Applied Technology and Professional Development</u></b>									
SAT Grants				1.00	0.50	1.50	1.00	0.50	1.50
SAT State Appropriated	12.00	11.00	23.00	12.24	18.75	30.99	24.24	29.75	53.99
Accelerated Business Degree					0.50	0.50		0.50	0.50
Alternate Energy Sources				1.00		1.00	1.00		1.00
CE Admin. Self Support					1.37	1.37		1.37	1.37
Computer Training Program				0.52		0.52	0.52		0.52
Encore Institute					1.00	1.00		1.00	1.00
Energy Management					0.50	0.50		0.50	0.50
Financial Services					1.46	1.46		1.46	1.46
Ford Grant				1.00		1.00	1.00		1.00
Information Studies Program					1.00	1.00		1.00	1.00
Lineman Program				2.00		2.00	2.00		2.00
Miller Financial Services					1.00	1.00		1.00	1.00
Program & Course Administration					4.00	4.00		4.00	4.00
Public Safety/Homeland Security	1.00		1.00	0.08	1.47	1.55	1.08	1.47	2.55

	Full-time Faculty			Full-time Admin/Staff			All Full-time		
	Male	Female	Total	Male	Female	Total	Male	Female	Total
<b><u>Assoc. Provost of Economic Development and Business Partnerships</u></b>									
ACT Testing Center			0.50			0.50	0.50		0.50
Autocad Non Credit			0.50			0.50	0.50		0.50
Business & Industry Training					1.00	1.00		1.00	1.00
Corporate Training & Testing			0.50			0.50	0.50		0.50
Custom Fit			1.50	2.00		3.50	1.50	2.00	3.50
Goldman Sachs			2.00	1.50		3.50	2.00	1.50	3.50
MBIC				1.00		1.00		1.00	1.00
Miller Business Innovation			1.00			1.00	1.00		1.00
Miller Conferencing/Events			2.55	1.00		3.55	2.55	1.00	3.55
Small Business Regional			1.50			1.50	1.50		1.50
Small Business State			2.00			2.00	2.00		2.00

**Vice President of Business Services**

Auxiliary Custodians			3.00	2.00		5.00	3.00	2.00	5.00
Accounts Receivable			1.00	4.00		5.00	1.00	4.00	5.00
Cashiering			2.00	6.00		8.00	2.00	6.00	8.00
Financial Services Self Support				0.12		0.12		0.12	0.12
Human Resources Wellness			1.00			1.00	1.00		1.00
Parking Services/Public Safety			6.00	3.00		9.00	6.00	3.00	9.00
SC Computer Lab Aides			2.50			2.50	2.50		2.50

**Vice President of Governance & Comm. Rela.**

Vice President's Office			1.00			1.00	1.00		1.00
Grants Administration			1.00	3.33		4.33	1.00	3.33	4.33

**Vice President of Student Services**

Vice President's Office				0.72		0.72		0.72	0.72
Athletics			5.00	7.56		12.56	5.00	7.56	12.56
Child Care Center				1.00		1.00		1.00	1.00
College Store			2.00	9.00		11.00	2.00	9.00	11.00
Community Outreach				1.00		1.00		1.00	1.00
Community Service			0.43	2.65		3.08	0.43	2.65	3.08
Disability Resources				1.15		1.15		1.15	1.15
Financial Aid			1.00	1.13		2.13	1.00	1.13	2.13
Food Services/Catering			3.00	2.00		5.00	3.00	2.00	5.00
Grand Theatre			1.00	1.00		2.00	1.00	1.00	2.00
Health & Wellness			2.00	6.12		8.12	2.00	6.12	8.12
ID Center			1.00	3.00		4.00	1.00	3.00	4.00
International Students				1.25		1.25		1.25	1.25
Lifetime Activity Center			1.00			1.00	1.00		1.00
Multi Cultural Affairs			1.00			1.00	1.00		1.00
Printing Services			1.00	1.00		2.00	1.00	1.00	2.00
Prospective Students/Outreach			1.00	1.00		2.00	1.00	1.00	2.00
Student Center/Taylorville Redwood			3.59	4.00		7.59	3.59	4.00	7.59
Student Center/South			1.00	1.00		2.00	1.00	1.00	2.00
Student Life & Leadership			3.00	4.00		7.00	3.00	4.00	7.00
Student Services - Offsite				2.00		2.00		2.00	2.00
Student Support Services/TRIO			1.00	6.00		7.00	1.00	6.00	7.00
Testing			1.00			1.00	1.00		1.00
Utah Capitol Food Service			2.00	1.00		3.00	2.00	1.00	3.00
Veterans Affairs				1.00		1.00		1.00	1.00

	COLLEGE WIDE SUMMARY								
	Full-time Faculty			Salaried Admin/Staff			All Full-time		
	Male	Female	Total	Male	Female	Total	Male	Female	Total
<b>Totals</b>	<b>16.50</b>	<b>15.50</b>	<b>32.00</b>	<b>86.37</b>	<b>133.72</b>	<b>220.09</b>	<b>102.87</b>	<b>149.22</b>	<b>252.09</b>

**TABLE 22.**  
**FACULTY INFORMATION**

	MALE	FEMALE	TOTAL
<b>TENURE</b>			
Tenured	100	98	198
Tenure Track	55	43	98
Off Tenure	26	19	45
<b>Total</b>	<b>181</b>	<b>160</b>	<b>341</b>

<b>RANKING</b>			
Lecturer	1	2	3
Instructor	59	28	87
Assistant Professor	46	42	88
Associate Professor	47	65	112
Professor	28	23	51
<b>Total</b>	<b>181</b>	<b>160</b>	<b>341</b>

<b>EDUCATIONAL CREDENTIALS</b>			
Less than 2 Years	12	1	13
2 Year Degree	15	6	21
Bachelor Degree	21	14	35
Masters Degree	98	117	215
Doctorate Degree	35	22	57
<b>Total</b>	<b>181</b>	<b>160</b>	<b>341</b>

<b>MALE/FEMALE RATIOS</b>			
Male	181		181
Female		160	160
<b>Total</b>	<b>181</b>	<b>160</b>	<b>341</b>

---

NOTE: School of Applied Technology numbers are included  
 SOURCE: James Broadbent, HR Manager, Faculty; SLCC HR Department

## **TAB D. STEP AHEAD**

### **DEGREES AND AWARDS**

In 2012-2013, Salt Lake Community College awarded 3,485 Associate Degrees. SLCC had 33.6% of all Associate Degrees in the Utah System of Higher Education. *Community College Week* recognized SLCC as being 7th in the nation for the number of Associate Degrees awarded out of all two-year community colleges.

#### **Fast Facts Number of Degrees Awarded 2012-2013**

- AS = 2,655
- AAS = 725
- AA = 51
- APE = 54
- Certificates = 129
- Diplomas = 12
- Certificates of Proficiency = 6

**TABLE 23.**

**DISTRIBUTION OF GRADUATES  
BY DEGREE AND BY MAJOR**

PROGRAM AREA	2010-11						2011-12						2012-13							
	APE	AA	AS	AAS	CERT	DIP	APE	AA	AS	AAS	CERT	DIP	APE	AA	AS	AAS	CERT	DIP	CP	
Accounting				12	9					16	1					13	3			
Apprenticeship (all)				47						40						31				
Architectural Technology			22	9					17	2					8	9				
ASL/Interpreting	13							13						1						
Automotive Collision Repair & Painting				4						4	2					5				
Automotive Technician				16						14						14				
Aviation Maintenance Technician				10		1				16		1				15				
Aviation Technology/Professional Pilot			9						13	1					10	1				
Barbering/Cosmetology				55	12	23				48	22	21				59	22	12		
Biology			9						13						9					
Biotechnology/Biomanufacturing			8	5	1				6	7	2	1			14	3				
Bldg Construction/Construction Mgt (all)			9	5					9	2					15	6	4			
Business	32	226						26	208					26	202					
Business Mgt/Log Mgt/Prod Mgt/SBO (all)				1						9	1				8	2				
Chemistry			16						12						22					
Communications (all)			18						22						35	1				
Computer Info Systems (all)			13	5					15	9					18	9				
Computer Science			21						23	3					30	9				
Criminal Justice			70	3					67	3					67	2				
Culinary Arts				16						21						33				
Dental Hygiene				22						16						13				
Diesel Systems Technology				11						11						8				
Economics			15						13						10					
Education			29						38						32					
Electrical and Instrumentation Tech				8	2					2										
Electronics			2	6																
Energy Management				10						11					7					
Engineering (all)	44							69						54						
Engineering Design/Drafting Tech			8	2	12				12	14	11				14	4	9			
English		16	6		1			17	4				7	9			2			
Environmental Technology			2						2											
Family & Human Studies									7						5					
Fashion Institute					4					19	3					9				
Film Production Tech				2						4						5				
Finance and Credit				2						4						3				
Fitness Technician				8						11						5				
General Studies			1805						1968						1940					
Geosciences (all)			4	3	2				2	2	11				3	2	8			
Health Science			93						64						63					
History		21						14					9							
Humanities		7						3					4							
Interior Design				6						22						21				
International Studies (all)		4						3					2							
Marketing Mgt				7	1					1						2	1			
Mathematics			6						7						9					
Medical Assistant					62						64						51			
Mortuary Science																6				
Music			8							4					3				2	
Non-Destructive Testing Tech				9						5						5				
Nursing				260						232						229				
Occupational Therapy Asst				15						19						21				
Paralegal Studies				36						48						37				
Physical Therapist Asst				22						21						19				
Physics			1							3					4					
Political Science			20							18					7					
Psychology			73							54					66					
Radiologic Technology				31						39						25				
Social Work		3	25					1	12				2	15						
Sociology			39						39						37					
Surgical Technology					32						32						25			
Surveying				10						6						8				
Visual Art & Design (all)			6	43	2					63	1				8	66	2		4	
Welding				9						7						12				
<b>COLLEGE TOTALS</b>	<b>44</b>	<b>96</b>	<b>2563</b>	<b>710</b>	<b>140</b>	<b>24</b>		<b>69</b>	<b>77</b>	<b>2652</b>	<b>752</b>	<b>150</b>	<b>23</b>	<b>54</b>	<b>51</b>	<b>2655</b>	<b>725</b>	<b>129</b>	<b>12</b>	<b>6</b>



**TABLE 24.**

**DISTRIBUTION OF GRADUATES BY DEGREE  
BY MAJOR AND BY GENDER**

PROGRAM AREA	MALE 2012-13							FEMALE 2012-13							TOTAL 2012-13							
	APE	AA	AS	AAS	CERT	DIP	CP	APE	AA	AS	AAS	CERT	DIP	CP	APE	AA	AS	AAS	CERT	DIP	CP	
Accounting			4		1						9		2						13		3	
Apprenticeship (all)					31															31		
Architectural Technology			5		7					3		2							8		9	
ASL/Interpreting								1									1					
Automotive Collision Repair & Painting					5															5		
Automotive Technician					13						1									14		
Aviation Maintenance Technician					13						2									15		
Aviation Technology/Professional Pilot			10		1														10		1	
Barbering/Cosmetology							1				59	21	12						59	22	12	
Biology			3							6									9			
Biotechnology/Biomanufacturing			4		2					10	1								14		3	
Bldg Construction/Construction Mgt (all)			14		5		3			1	1	1							15	6	4	
Business	23		130						3	72								26	202			
Business Mgt/Log Mgt/Prod Mgt/SBO (all)					4		1				4		1						8		2	
Chemistry			15							7									22			
Communications (all)			13		1					22									35		1	
Computer Info Systems (all)			18		6						3								18		9	
Computer Science			26		8					4		1							30		9	
Criminal Justice			39		2					28									67		2	
Culinary Arts					18						15								33			
Dental Hygiene					1						12								13			
Diesel Systems Technology					8														8			
Economics			10																10			
Education			5							27									32			
Energy Management					7														7			
Engineering (all)	47								7										54			
Engineering Design/Drafting Tech			10		2		8			4	2	1							14	4	9	
English			2				1			7	7		1						7	9		2
Family and Human Studies										5									5			
Fashion Institute											9								9			
Film Production Tech					3						2								5			
Finance and Credit					2						1								3			
Fitness Technician					2						3								5			
General Studies					904						1036								1940			
Geosciences (all)			3		2		4					4							3	2	8	
Health Science					15						48								63			
History			4							5									9			
Humanities			1							3									4			
Interior Design							1				20								21			
International Studies (all)			1							1									2			
Marketing Mgt					1						1		1						2		1	
Mathematics					7						2								9			
Medical Assistant							2					49							51			
Mortuary Science					3						3								6			
Music			1							2									3			2
Non-Destructive Testing Tech					5														5			
Nursing					45						184								229			
Occupational Therapy Asst					2						19								21			
Paralegal Studies					5						32								37			
Physical Therapist Asst					5						14								19			
Physics			2							2									4			
Political Science			7																7			
Psychology			21								45								66			
Radiologic Technology					8						17								25			
Social Work			5						2	10								2	15			
Sociology			9							28									37			
Surgical Technology							8					17							25			
Surveying					7						1								8			
Visual Art & Design (all)			8		28		1				38		1		1				8	66	2	4
Welding					12														12			
<b>COLLEGE TOTALS</b>	<b>47</b>	<b>29</b>	<b>1286</b>	<b>269</b>	<b>30</b>	<b>0</b>	<b>5</b>	<b>7</b>	<b>22</b>	<b>1369</b>	<b>456</b>	<b>99</b>	<b>12</b>	<b>1</b>	<b>54</b>	<b>51</b>	<b>2655</b>	<b>725</b>	<b>129</b>	<b>12</b>	<b>6</b>	

## **TAB E. STEP AHEAD**

### **FINANCIAL INFORMATION**

Salt Lake Community College strives to keep higher education affordable for the residents of its service area. The College consistently tries to minimize the tuition impact on students.

Salt Lake Community College provides assistance when possible through Federal grants, student loans, and outside scholarships. In 2012-2013, an estimated 29,245 students received \$80,954,781 in some form of financial aid.

#### **Fast Facts**

- 2013-2014 Full-time Tuition and Fees (per semester) = \$1,671
- 2012-2013 Cost per FTE = \$2,761
- 2012-2013 Estimated Students with Financial Aid = 29,245

**TABLE 25.**

**2013-2014 CURRENT SEMESTER TUITION AND FEE SCHEDULE**

2013-2014 TUITION AND FEE SCHEDULE RESIDENT STUDENTS				2013-2014 TUITION AND FEE SCHEDULE NON-RESIDENT STUDENTS		
CREDIT HOURS	REGULAR TUITION	TOTAL MISC. FEES	TOTAL TUITION & FEES	REGULAR TUITION	TOTAL MISC. FEES	TOTAL TUITION & FEES
1	120.00	56.00	176.00	424.00	56.00	480.00
2	242.00	73.00	315.00	848.00	73.00	921.00
3	364.00	90.00	454.00	1272.00	90.00	1362.00
4	486.00	107.00	593.00	1696.00	107.00	1803.00
5	608.00	124.00	732.00	2120.00	124.00	2244.00
6	730.00	141.00	871.00	2544.00	141.00	2685.00
7	852.00	158.00	1010.00	2968.00	158.00	3126.00
8	974.00	175.00	1149.00	3392.00	175.00	3567.00
9	1096.00	192.00	1288.00	3816.00	192.00	4008.00
10	1218.00	209.00	1427.00	4240.00	209.00	4449.00
11	1340.00	209.00	1549.00	4664.00	209.00	4873.00
12	1462.00	209.00	1671.00	5088.00	209.00	5297.00
13	1462.00	209.00	1671.00	5088.00	209.00	5297.00
14	1462.00	209.00	1671.00	5088.00	209.00	5297.00
15	1462.00	209.00	1671.00	5088.00	209.00	5297.00
16	1462.00	209.00	1671.00	5088.00	209.00	5297.00
17	1462.00	209.00	1671.00	5088.00	209.00	5297.00
18	1462.00	209.00	1671.00	5088.00	209.00	5297.00
19	1584.00	209.00	1793.00	5512.00	209.00	5721.00
20	1706.00	209.00	1915.00	5936.00	209.00	6145.00
21	1828.00	209.00	2037.00	6360.00	209.00	6569.00
22	1950.00	209.00	2159.00	6784.00	209.00	6993.00
23	2072.00	209.00	2281.00	7208.00	209.00	7417.00
24	2194.00	209.00	2403.00	7632.00	209.00	7841.00
25	2316.00	209.00	2525.00	8056.00	209.00	8265.00

**HISTORICAL TUITION AND FEE RATES**

CREDIT HOURS	2006-07 TUITION/ FEES	2007-08 TUITION/ FEES	2008-09 TUITION/ FEES	2009-10 TUITION/ FEES	2010-11 TUITION/ FEES	2011-12 TUITION/ FEES	2012-13 TUITION/ FEES	2013-14 TUITION/ FEES
<b>5</b>								
RESIDENT	581.25	607.00	634.50	638.00	646.00	671.00	695.00	732.00
NON-RES	1710.75	1791.00	1881.50	1935.00	1946.00	2036.00	2121.00	2244.00
<b>10</b>								
RESIDENT	1038.75	1093.25	1145.75	1203.00	1256.00	1306.00	1355.00	1427.00
NON-RES	3188.25	3367.25	3552.75	3695.00	3856.00	4036.00	4206.00	4449.00
<b>15</b>								
RESIDENT	1201.75	1267.25	1329.75	1395.00	1466.00	1526.00	1585.00	1671.00
NON-RES	3759.25	3977.25	4186.75	4365.00	4586.00	4802.00	5006.00	5297.00

**TABLE 26.**

**COST PER STUDENT CREDIT HOUR BY DEPARTMENT (ANNUALIZED FTE)  
INSTRUCTIONAL COST**

DEPARTMENT	09-10		10-11		11-12		12-13	
	AFTE	\$/SCH	AFTE	\$/SCH	AFTE	\$/SCH	AFTE	\$/SCH
Accounting	248	101	283	102	299	99	290	105
Apprenticeship (all)	345	74	271	72	197	102	168	103
Architectural Technology	87	199	84	177	68	199	71	183
ASL/Interpreting	112	128	84	137	69	168	65	153
Automotive Collision Repair & Painting	29	204	26	221	33	200	27	210
Automotive Technician	111	226	115	211	113	259	105	257
Aviation Technology/Aviation Maintenance Tech	91	245	129	217	152	163	136	177
Aviation Technology/Professional Pilot	57	178	74	151	71	153	99	154
Barbering/Cosmetology	309	153	287	170	265	198	210	241
Biology	1225	58	1231	61	1158	64	1116	67
Biotechnology *	23	1234	26	1056	29	976	26	1098
Bldg Construction/Construction Mgt	58	292	65	230	62	257	54	273
Business Economics	307	59	354	59	309	72	290	79
Business Management	409	92	436	80	380	96	346	114
Chemistry	597	58	591	64	532	69	507	71
Communication	732	62	829	66	804	63	744	70
Computer Info Systems	714	69	780	62	751	66	452	96
Computer Science	135	228	161	112	185	110	224	115
Criminal Justice	324	51	390	65	394	65	334	74
Culinary Arts	115	144	143	167	118	175	111	159
Dental Hygiene	50	431	34	553	26	770	25	641
Developmental Math							1078	67
Developmental Reading							250	101
Developmental Writing							362	102
Developmental Education	2119	72	2079	78	2098	82		
Diesel Systems Technology	30	278	43	362	44	203	40	213
Education	119	47	144	45	142	60	142	61
Electronics & Instrumentation Tech **	29	127	10	192				
Engineering	129	275	164	227	193	218	182	227
Engineering Design/Drafting Tech	67	287	69	221	73	201	73	277
English	1331	73	1125	83	1197	83	1360	75
English Second Language	97	91	88	83	94	73	91	118
Environmental Technology **	21	20	15	71				
Family & Human Studies	232	72	268	69	199	81	194	77
Fashion Institute	91	68	106	65	120	64	123	84
Finance and Credit	153	88	168	78	170	81	169	82
Fine Arts	653	60	779	61	766	58	734	57
Geosciences	259	66	289	61	289	59	298	67
Health & Lifetime Activities	782	73	903	74	897	66	811	72
Health Information Technology							10	109
History/Anthropology	647	58	714	52	703	56	701	56
Humanities	572	50	607	50	623	51	560	55
Interior Design	61	64	79	65	79	71	62	93
Languages	269	81	278	88	267	95	248	102
Learning Enhancement							348	68
Marketing	89	174	109	147	101	150	119	132
Mathematics	1775	48	1740	52	1746	54	1701	56
Medical Assistant	177	89	182	111	143	144	130	155
Mortuary Science					5	1310	16	310
Non-Destructive Testing Tech	23	205	20	177	18	232	19	230
Nursing	233	313	237	258	235	277	237	267
Occupational Therapy Asst	38	197	41	184	48	176	47	195
Paralegal Studies	121	98	134	107	134	109	113	121
Physical Therapist Asst	59	202	57	217	52	222	56	212
Physics	317	52	316	57	292	59	287	63
Political Science	173	60	195	54	183	69	192	68
Psychology	641	55	636	57	623	60	598	60
Radiologic Technology	77	155	76	150	70	161	66	179
Short-Term Intensive Training	22	643	17	392	10	757	20	407
Social Work	81	52	102	51	100	52	96	83
Sociology	284	59	310	54	287	63	249	61
Surgical Technology	19	233	19	238	23	209	16	290
Surveying	26	168	24	196	24	177	16	263
Visual Art & Design	540	128	564	135	580	126	597	122
Welding	80	156	79	171	89	163	83	181
<b>INSTRUCTIONAL TOTALS</b>	<b>18514</b>	<b>85</b>	<b>19179</b>	<b>85</b>	<b>18732</b>	<b>89</b>	<b>17894</b>	<b>92</b>

NOTE: \* Biotechnology includes partnership funding.  
 \*\* Program discontinued  
 \*\*\* Start up costs

**TABLE 27.**

**COST PER FULL-TIME EQUIVALENT (FTE) BY DEPARTMENT (ANNUALIZED FTE)**

DEPARTMENT	09-10		10-11		11-12		12-13	
	AFTE	\$/FTE	AFTE	\$/FTE	AFTE	\$/FTE	AFTE	\$/FTE
Accounting	248	3028	283	3054	299	2966	290	3164
Apprenticeship (all)	345	2223	271	2160	197	3058	168	3085
Architectural Technology	87	5963	84	5297	68	5984	71	5482
ASL/Interpreting	112	3843	84	4112	69	5046	65	4592
Automotive Collision Repair & Painting	29	6115	26	6615	33	5988	27	6300
Automotive Technician	111	6777	115	6325	113	7756	105	7697
Aviation Technology/AviationMaintenance Tech	91	7342	129	6507	152	4902	136	5324
Aviation Technology/Professional Pilot	57	5326	74	4533	71	4590	99	4614
Barbering/Cosmetology	309	4591	287	5091	265	5941	210	7237
Biology	1225	1732	1231	1838	1158	1927	1116	1998
Biotechnology *	23	37008	26	31676	29	29267	26	32935
Bldg Construction/Construction Mgt	58	8757	65	6893	62	7706	54	8190
Business Economics	307	1781	354	1779	309	2149	290	2368
Business Management	409	2745	436	2407	380	2893	346	3423
Chemistry	597	1746	591	1927	532	2055	507	2121
Communication	732	1857	829	1968	804	1903	744	2107
Computer Info Systems	714	2064	780	1856	751	1989	452	2894
Computer Science	135	6849	161	3373	185	3300	224	3453
Criminal Justice	324	1515	390	1959	394	1943	334	2211
Culinary Arts	115	4318	143	5019	118	5251	111	4767
Dental Hygiene	50	12920	34	16577	26	23087	25	19238
Developmental Math							1078	2007
Developmental Reading							250	3017
Developmental Writing							362	3053
Developmental Education	2119	2172	2079	2350	2098	2468		
Diesel Systems Technology	30	8326	43	10863	44	6095	40	6389
Education	119	1400	144	1357	142	1790	142	1841
Electronics & Instrumentation Tech **	29	3796	10	5769				
Engineering	129	8255	164	6805	193	6539	182	6811
Engineering Design/Drafting Tech	67	8606	69	6629	73	6024	73	8318
English	1331	2186	1125	2488	1197	2482	1360	2260
English Second Language	97	2716	88	2477	94	2189	91	3551
Environmental Technology **	21	596	15	2126				
Family & Human Studies	232	2147	268	2066	199	2444	194	2305
Fashion Institute	91	2041	106	1945	120	1911	123	2529
Finance and Credit	153	2628	168	2354	170	2444	169	2449
Fine Arts	653	1791	779	1817	766	1727	734	1699
Geosciences	259	1987	289	1825	289	1782	298	2015
Health & Lifetime Activities	782	2203	903	2220	897	1971	811	2169
Health Information Technology							10	3259
History/Anthropology	647	1750	714	1557	703	1682	701	1676
Humanities	572	1506	607	1496	623	1521	560	1653
Interior Design	61	1909	79	1955	79	2115	62	2785
Languages	269	2435	278	2634	267	2847	248	3060
Learning Enhancement							348	2054
Marketing	89	5233	109	4403	101	4493	119	3966
Mathematics	1775	1436	1740	1568	1746	1626	1701	1695
Medical Assistant	177	2664	182	3334	143	4317	130	4642
Mortuary Science					5	39315 ***	16	9296
Non-Destructive Testing Tech	23	6163	20	5323	18	6959	19	6904
Nursing	233	9395	237	7749	235	8308	237	7997
Occupational Therapy Asst	38	5911	41	5513	48	5293	47	5848
Paralegal Studies	121	2932	134	3221	134	3259	113	3635
Physical Therapist Asst	59	6056	57	6514	52	6670	56	6345
Physics	317	1568	316	1703	292	1764	287	1893
Political Science	173	1803	195	1613	183	2085	192	2036
Psychology	641	1664	636	1715	623	1790	598	1800
Radiologic Technology	77	4658	76	4508	70	4835	66	5377
Short-Term Intensive Training	22	19287	17	11771	10	22703	20	12202
Social Work	81	1545	102	1532	100	1569	96	2492
Sociology	284	1775	310	1619	287	1883	249	1826
Surgical Technology	19	6976	19	7127	23	6284	16	8699
Surveying	26	5042	24	5870	24	5317	16	7892
Visual Art & Design	540	3852	564	4037	580	3767	597	3652
Welding	80	4680	79	5139	89	4883	83	5418
<b>INSTRUCTIONAL TOTALS</b>	<b>18514</b>	<b>2558</b>	<b>19179</b>	<b>2552</b>	<b>18732</b>	<b>2657</b>	<b>17894</b>	<b>2761</b>

NOTE: \$/s/FTE reflect actual costs

\* Biotechnology includes partnership funding.

\*\* Program discontinued

\*\*\* Start up costs

**TABLE 28.****COSTS PER FTE (Full-Time Equivalent) STUDENT AT SLCC  
(Current and Adjusted for Inflation)**

<b>Academic Year</b>	<b>Cost Per Student</b>	<b>Inflation Rate (CPI)</b>	<b>Adjusted Cost Per Student</b>
1990-91	3545.00	130.70	2712.32
1991-92	3693.00	136.20	2711.45
1992-93	3959.00	140.30	2821.81
1993-94	4016.00	144.50	2779.24
1994-95	4319.00	148.20	2914.30
1995-96	4478.00	152.40	2938.32
1996-97	4432.00	156.90	2824.73
1997-98	4367.00	160.50	2720.87
1998-99	4856.00	163.00	2979.14
1999-00	4788.00	166.60	2873.95
2000-01	4887.00	172.20	2837.98
2001-02	4913.00	177.10	2774.14
2002-03	4550.00	179.90	2529.18
2003-04	4641.00	184.00	2522.28
2004-05	4881.00	188.90	2583.91
2005-06	5412.00	195.30	2771.12
2006-07	5886.00	201.60	2919.64
2007-08	6569.00	207.30	3168.84
2008-09	6751.00	215.30	3135.62
2009-10	5790.00	214.50	2699.30
2010-11	5839.00	218.10	2677.21
2011-12	5912.00	224.90	2628.72
2012-13	6215.00	229.60	2706.88

---

SOURCE: 1990-91 to 2012-13, Reported E & G Actuals  
(Includes tuition waivers and excludes transfers)

United States Consumer Price Index (CPI),  
1982-1984 = 100

**TABLE 29.**  
**DEPARTMENT OF FINANCIAL AID**

TYPES OF FINANCIAL ASSISTANCE	2002-2003	2012-2013	% INCREASE/ DECREASE
* Pell Grant	\$12,172,870	\$41,492,548	240.86%
* Supplemental Educational Opportunity Grant	\$375,009	\$398,900	6.37%
* Federal Work Study	\$334,118	\$441,527	32.15%
* Perkins Student Loans	\$1,029,388	\$529,256	-48.59%
* Stafford Direct Loan Program	\$6,259,526	\$34,275,291	447.57%

Estimate: 29,245 students received some form of Aid in 2012-2013.

In 2012-2013, approximately 118,000 student contacts were made through the Financial Aid Department.

In 2012-2013, \$2,095,098 student tuition waivers were granted.

In 2012-2013, \$845,296 outside scholarships were disbursed.

In 2012-2013, \$876,865 State Aid was disbursed.

---

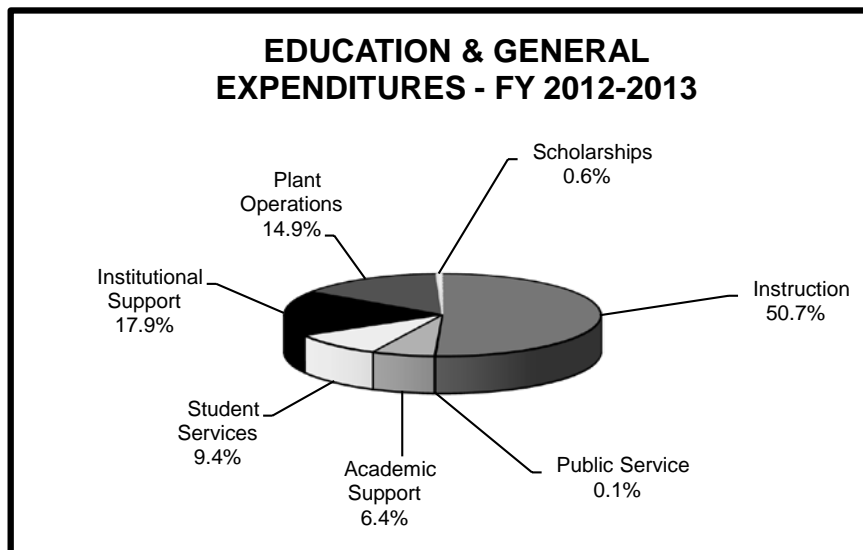
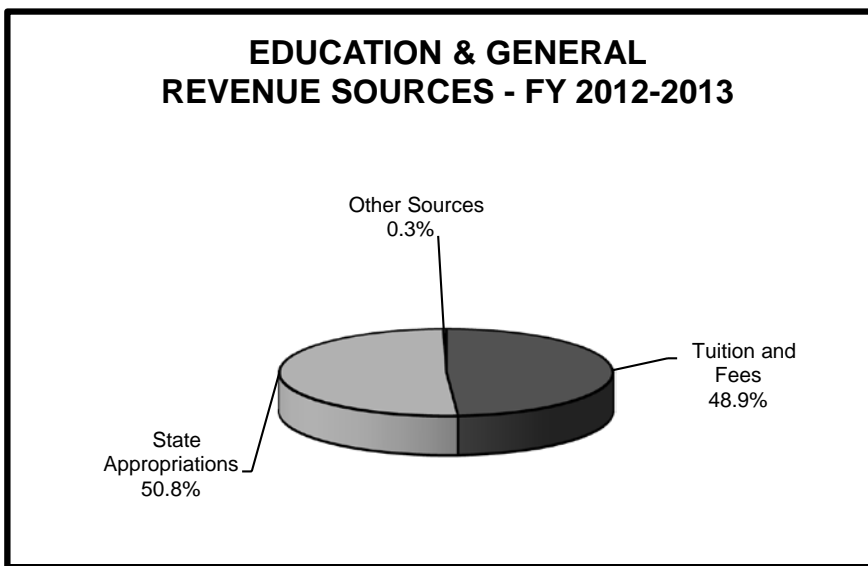
SOURCE: Cristi Millard, Director, Financial Aid

**TABLE/GRAPH 30.**

**2012-2013 EDUCATION AND GENERAL  
REVENUE SOURCES AND EXPENDITURES**

REVENUE SOURCES	
Tuition and Fees	\$ 57,286,839
State Appropriations	59,580,786
Other Sources	366,173
<b>TOTAL</b>	<b>\$ 117,233,798</b>

EXPENDITURES	
Instruction	\$ 55,145,513
Public Service	142,543
Academic Support	6,943,022
Student Services	10,278,093
Institutional Support	19,552,664
Plant Operations	16,232,355
Scholarships	675,271
<b>TOTAL</b>	<b>\$ 108,969,461</b>



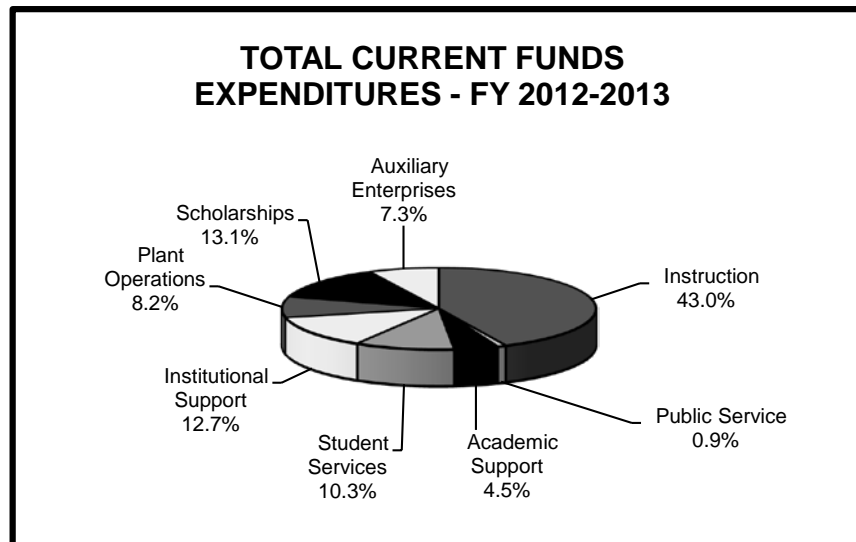
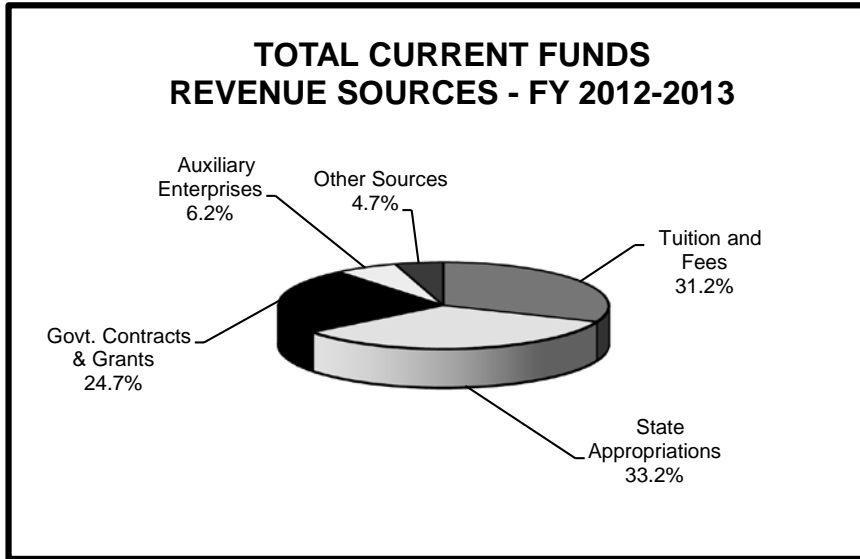


**TABLE/GRAPH 31.**

**2012-2013 TOTAL CURRENT FUNDS  
REVENUE SOURCES AND EXPENDITURES**

REVENUE SOURCES	
Tuition and Fees	\$ 65,197,297
State Appropriations	69,417,368
Govt. Contracts & Grants	51,601,669
Auxiliary Enterprises	12,935,888
Other Sources	9,900,890
<b>TOTAL</b>	<b>\$ 209,053,112</b>

EXPENDITURES	
Instruction	\$ 83,984,521
Public Service	1,751,393
Academic Support	8,873,616
Student Services	20,040,323
Institutional Support	24,791,817
Plant Operations	16,141,614
Scholarships	25,601,729
Auxiliary Enterprises	14,187,494
<b>TOTAL</b>	<b>\$ 195,372,507</b>



# **TAB F. STEP AHEAD**

## **FACILITIES**

Salt Lake Community College facilities have been modified to meet the needs of growth and a changing community. A new Instruction and Administration Building (IAB) opened in October 2013, replacing the Nelson Administration Building on the Taylorsville Redwood Campus. Additionally, the Center for Arts and Media at South City Campus was opened in November 2013.

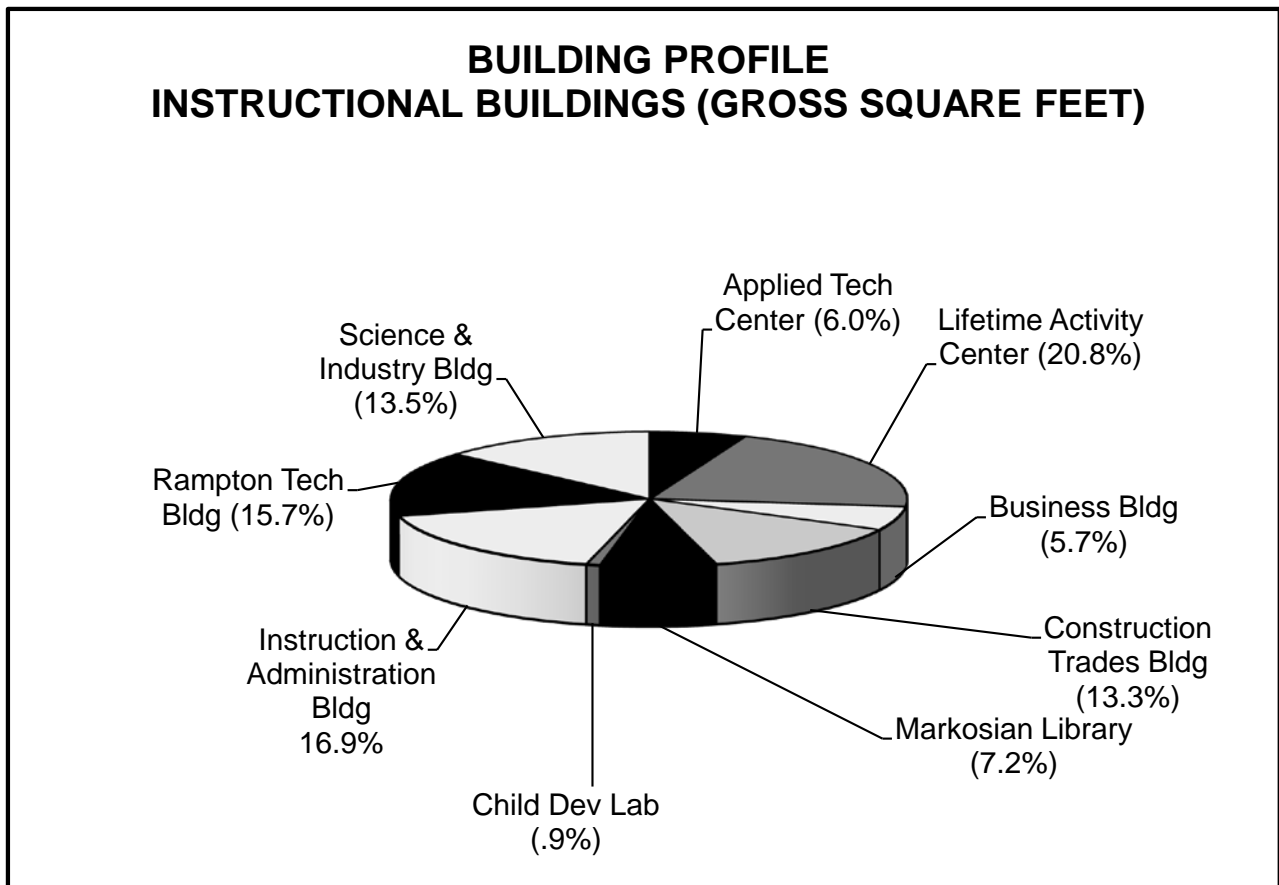
### **Fast Facts**

- Taylorsville Redwood Campus -  
Total Square Footage = 1,091,484
- South City Campus -  
Total Square Footage = 478,068
- Miller Campus -  
Total Square Footage = 330,882
- Jordan Campus -  
Total Square Footage = 267,120
- Meadowbrook Campus -  
Total Square Footage = 72,383
- Leased Properties -  
Total Square Footage = 149,633

**TABLE/GRAPH 32.**

**BUILDING PROFILE  
INSTRUCTIONAL BUILDINGS - TAYLORSVILLE REDWOOD CAMPUS  
BASED ON GROSS SQUARE FEET**

<b>BUILDING</b>	<b>GROSS SQ. FEET</b>
Lifetime Activity Center	179,637
Instruction & Administration Bldg	145,841
Rampton Technology Bldg	135,562
Science & Industry Bldg	116,000
Construction Trades Bldg	114,658
Markosian Library	62,000
Applied Technology Center	51,905
Business Building	49,500
Child Development Lab	7,510
<b>TOTAL</b>	<b>862,613</b>



# TABLE/GRAPH 33.

## CAPITAL FACILITIES PROFILE ALL CAMPUS LOCATIONS BASED ON GROSS SQUARE FEET

BUILDING	GROSS SQ. FEET
<b>TAYLORSVILLE REDWOOD CAMPUS</b>	
Lifetime Activity Center	179,637
Student Center	166,088
Instruction and Administration Bldg	145,841
Rampton Technology Bldg	135,562
Science & Industry Bldg	116,000
Construction Trades Bldg	114,658
Markosian Library	62,000
Applied Technology Center	51,905
Business Building	49,500
Gundersen Facilities Services Building	16,800
Facilities Complex 048	13,600
Facilities Complex 049	9,000
Heating Plant	7,580
Child Development Lab	7,510
Physical Plant Storage	3,593
Cooling Tower	2,317
Facilities Complex 052	2,000
Alder Amphitheater	1,607
Professional Lab	1,456
Facilities Complex 056	1,200
Facilities Complex 057	1,200
Athletic Restrooms	750
Softball Storage (1-3)	520
Concession/Scorebooth	350
Tennis Court Storage	268
Irrigation Pump Building	240
ATC Hazardous Storage Building	162
STC Kiosk	100
STC Ticket Booth	40
<b>TOTAL</b>	<b>1,091,484</b>

<b>MILLER CAMPUS</b>	
Larry & Gail Miller Public Safety Ed. & Training Cntr.	73,221
Auto Training Center	48,820
Miller Free Enterprise Center	48,650
Corporate Partnership Center	43,750
Miller Professional Development Center - Karen Gail Miller Conference Center	37,935
Miller DPS Dormitory	36,870
Miller Culinary Institute	24,480
Miller DPS Firing Range	16,166
Shop Storage Building	990
<b>TOTAL</b>	<b>330,882</b>

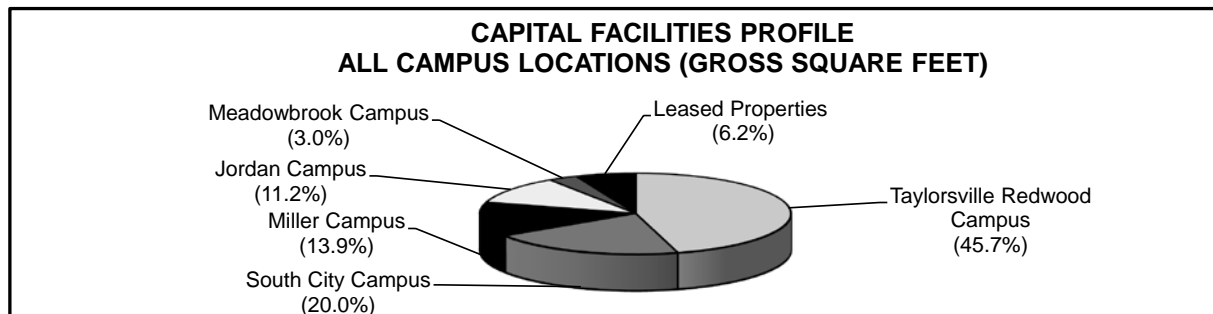
BUILDING	GROSS SQ. FEET
<b>SOUTH CITY CAMPUS</b>	
Main Building	455,871
South City Annex	20,867
Portable Office	1,330
<b>TOTAL</b>	<b>478,068</b>

<b>LEASED PROPERTIES</b>	
Westpointe Center	35,700
Highland Center	31,554
South City Utility Storage Unit	30,000
Library Square Center	29,897
International Aerospace Aviation Education Center	18,177
Airport Hangers (3)	2,760
Community Writing Center	1,545
<b>TOTAL</b>	<b>149,633</b>

<b>MEADOWBROOK CAMPUS</b>	
Building A	26,954
Building C	25,844
Building B	17,608
MBC Portable #1 Flight Simulation	1,008
MBC Portable #2 Flight Program	969
<b>TOTAL</b>	<b>72,383</b>

<b>JORDAN CAMPUS</b>	
Jordan Health Science	151,000
Jordan High Tech Center	89,819
Student Pavilion	14,055
Jordan Distribution Center (Includes Tunnel)	11,270
Ballfield Out Buildings (5)	826
Pump House	150
<b>TOTAL</b>	<b>267,120</b>

SOURCE: Kathy Shipley, Access & Resource Manager



## **TAB G. STEP AHEAD**

### **STUDENT INPUT**

Salt Lake Community College surveys new students, non-returning students, and graduating students each year to better understand the needs and experiences of those attending SLCC. There is no single or typical student at SLCC. Students vary tremendously in age, in their work and family situations, and even in the reasons they attend the College.

These three surveys provide valuable data that provides important insights into SLCC's dynamic student population. As valuable as these statistics are, though, they only tell part of the story—the student population that completed these surveys possesses more diversity than statistics can describe.

Students list their primary objective in attending SLCC as transferring to a four-year institution. Students list financial demands as their greatest difficulty. Most SLCC students work at least part-time; the majority take less than a full load of college classes.

#### **Fast Facts**

- 48% of New Students reported an objective of earning a degree and then transferring
- 45% of Non-returning Students intend to re-enroll within a year
- 93% of SLCC Graduates were satisfied or very satisfied with their experience at SLCC

# EXPLANATION OF THE STUDENT FOLLOW-UP SYSTEMS

On a yearly basis Salt Lake Community College (SLCC) conducts anonymous student surveys asking certain kinds of information about the College. Three surveys are conducted annually.

- The **NEW STUDENT SURVEY** is sent to students enrolled Fall Semester who have not previously attended SLCC.
- The **NON-RETURNING STUDENT SURVEY** is sent to those students who attended SLCC during Fall Semester but who were not enrolled Spring Semester.
- The **GRADUATING STUDENT SURVEY** is e-mailed to students who graduated during the academic school year.

Data from each survey is entered into a statistical software package, analyzed, and the resulting information is published here. The results that are included present each question that was asked of each of the respondents followed by the resulting percentages.

If you have any questions concerning any facet of the Student Follow-Up system, please contact the Office of Institutional Research at Salt Lake Community College.

**TABLE 34.****2012-2013 NEW STUDENT SURVEY SUMMARY****SATISFACTION RESPONSE PERCENTAGES FOR SELECTED  
SLCC PROGRAMS AND SERVICES  
(Percentages are of those using the service.)**

ALL NEW FALL SEMESTER STUDENTS - 746 Responses

	<b>Very Satisfied</b>	<b>Satisfied</b>	<b>Neutral</b>	<b>Dis-satisfied</b>	<b>Very dis-satisfied</b>
Overall SLCC Experience	30%	53%	15%	1%	1%
Academic Advising	27%	39%	22%	11%	1%
Career Information	19%	38%	37%	5%	1%
Financial Aid	34%	32%	26%	5%	3%
Registration	30%	57%	8%	4%	1%
Student Express	22%	41%	33%	3%	1%
Appearance of Buildings/Classrooms	36%	45%	15%	3%	1%
Availability of Desired Classes	10%	42%	30%	16%	2%
Instructor's Use of Class Time	28%	52%	16%	3%	1%
Class Sizes	29%	56%	14%	1%	
Quality of Instruction	24%	54%	17%	3%	2%
Friendliness of Faculty/Response to Need	31%	51%	14%	2%	2%
Instructor's Knowledge of Subject Matter	40%	48%	11%		1%

**TABLE 34.****2012-2013 NEW STUDENT SURVEY SUMMARY (Continued)**

Primary educational objective in attending?

48%	Earn degree and transfer
24%	Earn degree and work in that field
12%	Take courses/transfer before degree
3%	Take some courses and get a new job
1%	Upgrade skills in present job
12%	Other

Total semesters (including the one) planning to attend SLCC?

5%	1
6%	2
6%	3
17%	4
7%	5
8%	6
2%	7
8%	8 and above
32%	Haven't decided
9%	No Response

What is your current credit hour enrollment?

20%	1 – 5
33%	6 – 11
32%	12 – 14
10%	15+
5%	No Response

What is your highest degree earned?

2%	Less than HS Diploma
70%	HS Diploma/GED
7%	One-year Certificate of Completion
5%	AS/AAS/APE/AA
8%	BS/BA
3%	Graduate+
5%	No Response

Current status at SLCC?

48%	First-time college student
16%	Earned college credits through Concurrent, AP, etc.
36%	Previously attended another college
12%	Previously attended SLCC

What is your ethnic origin?

7%	American Indian/Alaskan Native
7%	Asian/Pacific Islander
2%	Black/Non-Hispanic
9%	Hispanic
72%	White/Non-Hispanic
3%	No Response

How many hours a week were you employed while also attending college?

14%	None
6%	1 – 19 hours
15%	20 – 39 hours
51%	40 hours
10%	41+
4%	No Response

What is your age group?

40%	18 – 21
19%	22 – 26
18%	27 – 35
13%	36 – 50
5%	Over 50
5%	No Response

Are you?

38%	Male
56%	Female
6%	No Response



**TABLE 35.**

**2012-2013 STUDENT FOLLOW-UP SURVEY SUMMARY (NON-RETURNING)**  
*Students who attended SLCC Fall Semester 2012,  
 but did not return Spring Semester 2013*

ALL NON-RETURNING STUDENTS -  
 (690 Responses)

What was your primary objective in attending SLCC?

33%	Earn degree/transfer to a 4 year institution
14%	Take courses/transfer before earning a degree at SLCC
19%	Earn a degree/certificate at SLCC and work in that field
4%	Take some courses to upgrade skills in present job
5%	Take some courses and apply for a new job
25%	Other

Why did I not re-enroll at SLCC in the Spring semester?

15%	Financial reasons
13%	Military/Church Mission
11%	Completed the courses I wanted
10%	Personal problems
9%	Transferred
4%	Graduated
3%	Dissatisfied with SLCC
29%	Other
6%	No response

How many semesters did you complete at SLCC?

26%	1
14%	2
14%	3
8%	4
8%	5
6%	6
3%	7
16%	8 and above
5%	No response

What was your total general grade point average?

6%	Less than 2.0
19%	2.1 – 3.0
23%	3.1 – 3.5
35%	Greater than 3.5
17%	Do not know/No Response

Do you intend to return and re-enroll at SLCC?

45%	Yes, within a year
20%	Yes, but don't know exactly when
17%	Uncertain about whether or not
17%	Do not plan to return
1%	No response

What was your credit hour enrollment last semester?

42%	1 – 5 credit hours
33%	6 – 11 credit hours
17%	12 – 14 credit hours
4%	15+ credit hours
4%	No response

How many hours do you work in a week?

15%	None
12%	1 – 19
28%	20 – 35
33%	36 – 45
9%	46 and over
3%	No response

What is your age group?

36%	18 – 23
25%	24 – 30
12%	31 – 35
23%	36 and over
4%	No response

Are you?

38%	Male
58%	Female
4%	No response

**TABLE 35.****2012-2013 STUDENT FOLLOW-UP SURVEY SUMMARY (NON-RETURNING)  
(Continued)****While you were attending SLCC, were you affected by any of the following situations?**

	<b>Not a Problem</b>	<b>Minor Problem</b>	<b>Problem</b>	<b>Major Problem</b>	<b>No Response</b>
I experienced financial difficulties.	38%	27%	18%	14%	3%
Family responsibilities made it difficult to attend	55%	19%	14%	7%	5%
Attendance conflicted with my work schedule	54%	22%	14%	6%	4%
Classes were not available when I needed them.	47%	26%	14%	11%	2%
Courses were not challenging enough.	80%	11%	2%	2%	5%
I found the course work too difficult.	70%	19%	7%	1%	3%
I couldn't decide on a major/field of study.	71%	14%	6%	5%	4%
I experienced health or other personal problems.	67%	14%	7%	8%	4%
I felt out of place at SLCC.	80%	10%	3%	2%	5%
I could not find time for classes and assignments.	60%	22%	11%	4%	3%
I lacked motivation to study and complete assignments.	67%	17%	8%	4%	4%
Taking only a few courses at a time is slow and discouraging.	63%	20%	9%	5%	3%

**Evaluate the areas that apply to you (Percentages are those using the services.)**

	<b>Very Satisfied</b>	<b>Satisfied</b>	<b>Neutral</b>	<b>Dis-satisfied</b>	<b>Very Dis-satisfied</b>
Overall SLCC experience	31%	48%	16%	4%	1%
Academic Advising	20%	30%	34%	12%	4%
Quality of Instruction	28%	45%	19%	6%	2%
Career Information	19%	30%	38%	9%	4%
Timely Feedback from Instructors	28%	42%	21%	6%	3%
Instructor Availability Outside of Class	26%	37%	30%	4%	3%
Availability of Classes at Preferred Campus	20%	32%	21%	21%	6%
Distance Education Offerings	19%	25%	49%	5%	2%

**TABLE 36.**

**2012-2013 GRADUATING STUDENT SURVEY**

(150 Responses)

(More than one response accepted.)

**What was your primary objective in attending SLCC?**

51%	University/College transfer credit
20%	Preparation for a job to be obtained
8%	Try to get a college degree as quickly as possible
21%	Other

**What are your plans after graduation?**

57%	Begin in Fall 2013 at a 4 year college/university
23%	Transfer to a 4 year college/university at some point in time in the future
25%	Try to obtain a job in the field I studied at SLCC
6%	Obtain a job in any field now that I have a college degree
14%	Other

**Which statement best describes your feelings about your educational experience at SLCC?**

60%	Very Satisfied
33%	Satisfied
3%	Neutral
3%	Disappointed
1%	Very Disappointed

**What is your age group?**

33%	24 years and under
28%	25 - 34
19%	35 - 44
9%	45 and over
11%	Unknown

**Are you?**

34%	Male
55%	Female
11%	Unknown

**At the present time, are you married?**

43%	Yes
46%	No
11%	No Response

**Rate the college services below according to how well they fulfilled your individual needs. (Percentages are those using the services.)**

	<u>Very Poor</u>	<u>Poor</u>	<u>Avg</u>	<u>Good</u>	<u>Very Good</u>
Academic/Career Advising	4%	10%	18%	34%	34%
Student Express	2%	3%	16%	41%	38%
Child Care Center			21%	8%	71%
Bookstore (not including textbook prices)	1%	2%	19%	41%	37%
Computer Labs		4%	14%	43%	39%
Disability Resource Cntr	6%	12%	18%	6%	58%
Financial Aid	2%	8%	9%	30%	51%
Library Services		3%	11%	40%	46%
Library Web Resources	3%	3%	17%	33%	44%
Student Employment	3%	14%	21%	24%	38%
Tutor/Learning Center		6%	17%	26%	51%
Veteran's Services			27%	9%	64%
Registration	2%	3%	13%	38%	44%

**Rate the instructional services according to how well they fulfilled your individual needs.**

	<u>Very Poor</u>	<u>Poor</u>	<u>Avg</u>	<u>Good</u>	<u>Very Good</u>	<u>N/A</u>
Physical Classroom	1%	5%	23%	39%	32%	
Typical Class Size			11%	28%	61%	
Location of Classes	1%	1%	18%	48%	32%	
Availability of Classes to Choose From	1%	7%	30%	37%	24%	1%
Instructor's Concern for Student Needs	1%	5%	18%	35%	40%	1%
Grading/Testing	1%	4%	15%	46%	34%	
Price of Textbooks	15%	28%	33%	18%	6%	
Overall Quality of Instruction	1%	4%	12%	46%	37%	
Instructor's Knowledge of Subject	1%	2%	7%	30%	60%	

## **TAB H. STEP AHEAD**

### **NON-CREDIT ACTIVITY**

The School of Applied Technology provides quality non-credit vocational/technical training for qualifying students. The School provided 359,887 hours of instruction in 2012-2013.

Economic Development and Business Partnerships, Division of Continuing Education, and the Institute of Public Safety, also provides quality instruction for businesses through workshops and specialized training programs.

#### **Fast Facts**

- School of Applied Technology 2012-2013  
Adjusted Scheduled Hours of Training  
= 359,887
- School of Applied Technology 2012-2013  
Student FTE's = 399.87
- School of Applied Technology Non-white  
Population = 39.7%
- Economic Development and Business  
Partnerships, Division of Continuing Education,  
and the Institute of Public Safety 2012-2013  
Non-Credit Student Enrollment = 12,483

# Salt Lake Community College School of Applied Technology

## Mission

The School of Applied Technology, within Salt Lake Community College, provides quality career and technical education in a flexible, competency-based format to meet the needs of students desiring low-cost training in high demand, high wage, and high skill job fields. Programs are responsive to business and industry requirements resulting in appropriate license, certification, or evidence of completion, articulating, where appropriate, with credit career and technical education courses within the College.

## Operating Characteristics

<b>Open-entry / Open-exit</b>	Students enter when they are ready and exit when they are finished
<b>Competency-based</b>	Students' progress as they demonstrate skills and knowledge
<b>Cost</b>	Tuition based on \$2.02 per clock hour (2013-2014)
<b>Secondary Students</b>	High school students enroll tuition free and may earn high school credit
<b>Flexible Start Date</b>	Programs available year-round – not tied to traditional semesters or school year
<b>Flexible Scheduling</b>	Flexible, individualized scheduling or students may enter a cohort
<b>Program Options</b>	Students select from more than 30 certificate options
<b>Locations</b>	Five sites in the Salt Lake Valley, some programs offered at more than one location
<b>Partnerships with Industry</b>	Every program has a Program Advisory Committee to assist and support
<b>Qualified Faculty</b>	Faculty are hired for their technical skills and their ability to work with students
<b>Sponsored</b>	Sponsorships – most programs are VA eligible and many are PELL eligible
<b>Basic Skills Available</b>	Adult Based Education, ESL, GED test prep, Learning Lab

**TABLE 37.**

**SCHOOL OF APPLIED TECHNOLOGY  
HEADCOUNT, ADJUSTED SCHEDULED HOURS, AND FTE ENROLLMENT  
2012-2013  
(Includes Carry-Ins From Fiscal Year to Fiscal Year)**

<b>Department</b>		<b>HEADCOUNT</b>	<b>SCHEDULED HRS</b>	<b>FTE'S</b>
<b>Program/Course</b>				
<b>Adult Basic Education</b>				
Adult Basic Eucation		52	6,632.00	7.37
Adult Basic Skills - Reading		1	278.00	0.31
Adult Basic Skills - Both		2	52.00	0.06
ASVAB Test Preparation		2	252.00	0.28
GED		13	3,269.00	3.63
<b>Air Conditioning, Heating and Refrigeration</b>				
Air Conditioning, Heating and Refrigeration		122	35,720.00	39.69
<b>Computer Technology</b>				
Computer Learning Center		118	13,151.00	14.61
Computer Support Specialist (A+)		108	19,872.00	22.08
Graphic Designer		17	2,491.00	2.77
Media Design Technology		23	6,288.00	6.99
Network Administrator		17	2,399.00	2.67
Network Engineer (MCSE)		1	52.00	0.06
Network Engineer		55	10,442.00	11.60
Network Infrastructure Technician		20	2,780.00	3.09
Web Site Designer		14	2,876.00	3.20
Web Programmer		27	4,448.00	4.94
<b>Diesel Systems Technology</b>				
Heavy Duty Diesel Maintenance		20	3,577.00	3.97
<b>Electronics</b>				
Electromechanical Assembly Technician		18	1,569.00	1.74
Electronics Assembly Technician		6	493.00	0.55
Electronics Comm Technician		10	1,863.00	2.07
Electronics Engineering Technician		16	3,353.00	3.73
Electronics Technician		46	12,252.00	13.61
<b>English as a Second Language (ESL)</b>				
English as a Second Language (ESL)		363	81,711.00	90.79
<b>Health Care Industry</b>				
Certified Nursing Assistant		163	12,328.00	13.70
Clinical Lab Assistant		14	1,778.00	1.98
Clinical Medical Assisting		90	18,386.00	20.43
Health Information Specialist		22	4,500.00	5.00
Health Unit Clerk/Coordinator		6	932.00	1.04
Medical Coding and Billing		159	29,768.00	33.08
Medical Office Laboratory Technician		1	183.00	0.20
Medical Office Administrator		29	10,605.00	11.78
Nutrition Assistant		3	43.00	0.05
Phlebotomy Technician		10	981.00	1.09
<b>Machinist</b>				
Machinist/Manual Machinist		33	7,010.00	7.79
<b>Office Information Systems</b>				
Accounting Clerk		54	9,873.00	10.97
Administrative Office Specialist		54	9,233.00	10.26
Business Administrative Support I		1	4.00	0.00
Customer Service/Receptionist		12	1,094.00	1.22
Customer Service Specialist		7	1,115.00	1.24
Office Clerk		1	298.00	0.33
<b>Professional Truck Driving</b>				
CDL Learners Permit		7	228.00	0.25
Professional Truck Driving		76	14,639.00	16.27
<b>Welding</b>				
Welding		67	21,069.00	23.41
<b>TOTALS</b>			<b>359,887.00</b>	<b>399.87</b>

**TABLE 38.**

**SCHOOL OF APPLIED TECHNOLOGY  
STUDENT INFORMATION JULY 1, 2012 THROUGH JUNE 30, 2013  
(Unduplicated Headcount)**

	FEMALE	MALE	GENDER NOT REPORTED	TOTAL NUMBER	% OF TOTAL
<b>ETHNICITY</b>					
Caucasian	381	520	1	902	49.2%
Hispanic	277	192	2	471	25.7%
Asian	64	67		131	7.1%
Black	37	47	1	85	4.6%
Native American	12	10		22	1.2%
Pacific Islander	12	8		20	1.1%
Two or more races	8	11		19	1.0%
Non Resident Alien	49	49	1	99	5.4%
Unknown	46	37	4	87	4.6%
<b>Totals</b>	<b>886</b>	<b>941</b>	<b>9</b>	<b>1836</b>	<b>100.0%</b>

<b>TRAINING STATUS</b>					
Completed Training Objectives	387	296	3	686	37.4%
Left Prior to Completing Training Objectives	251	334	4	589	32.1%
Continuing Training/Education	248	311	2	561	30.6%
<b>Totals</b>	<b>886</b>	<b>941</b>	<b>9</b>	<b>1836</b>	<b>100.0%</b>

<b>STUDENTS RECEIVING ASSISTANCE</b>					
<b>1,836 Surveyed</b>					
Supplemental Security Income	3			3	0.2%
Food Stamps	14	3		17	0.9%
<b>Totals</b>	<b>17</b>	<b>3</b>		<b>20</b>	<b>1.1%</b>

<b>OTHER ASSISTANCE</b>					
<b>1,836 Surveyed</b>					
<b>(Students can be in more than one category)</b>					
Displaced Homemakers	4			4	0.2%
Limited English Proficiency	201	155	4	360	19.6%
Economically Disadvantaged	60	49		109	5.9%
Single Heads of Household	11			11	0.6%

<b>STUDENTS AVERAGE AGE</b>					
<b>Average</b>	<b>35</b>	<b>35</b>	<b>33</b>		

**TABLE 39.**

**SCHOOL OF APPLIED TECHNOLOGY  
DISTRIBUTION OF GRADUATES  
BY PROGRAM AND BY GENDER**

<b>PROGRAM AREA</b>	<b>MALE 2012-2013</b>	<b>FEMALE 2012-2013</b>	<b>TOTAL 2012-2013</b>
AC/Refrigeration/Heating	18		18
Accounting Clerk	3	6	9
Administrative Office Specialist		7	7
Business Admin Support I	1		1
Certified Nurse Assistant	21	118	139
Clinical Lab Assistant	1	7	8
Clinical Medical Assisting	3	19	22
Computer Support Spec. A+	18	6	24
Customer Service Specialist		2	2
Customer Service Receptionist		4	4
Electromechanic Assembly Tech	3		3
Electronics Assembly Tech	1		1
Electronics Comm Tech	3		3
Electronics Engineering Tech	1		1
Electronics Technician	4		4
Graphic Designer	2		2
Health Information Specialist		4	4
Health Unit Clerk/Coordinator		6	6
Heavy Duty Diesel Maintenance	3		3
Manual Machinist	20		20
Media Design Technology	1		1
Medical Coding and Billing		43	43
Medical Office Administration		3	3
Network Administrator	2		2
Network Engineer	5		5
Phlebotomy Technician		3	3
Professional Truck Driving	61	4	65
Web Programmer	3	1	4
Web Site Designer	2		2
Welding	8		8
<b>TOTALS</b>	<b>184</b>	<b>233</b>	<b>417</b>

NOTE: Includes both Certificates of Completion and Certificates of Proficiency

SOURCE: Cognos Report/IPEDS Official Numbers

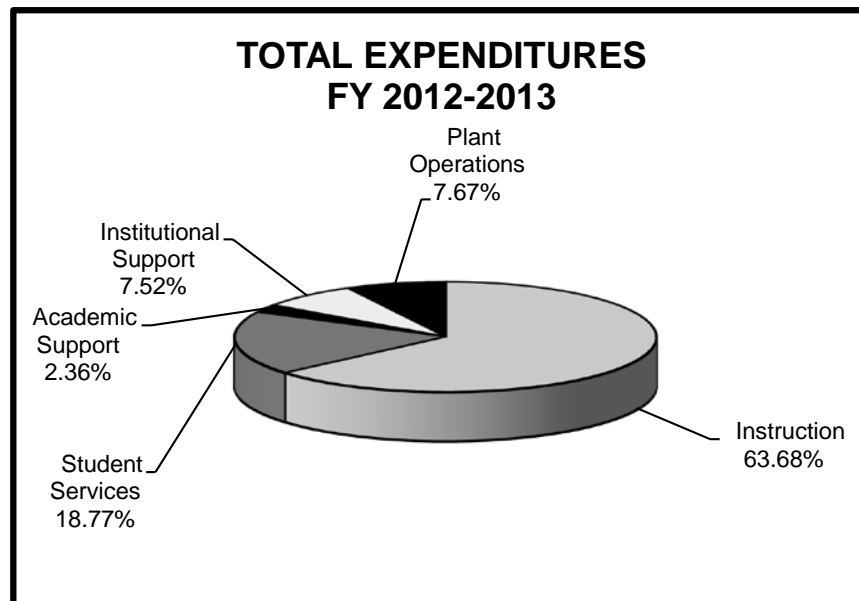
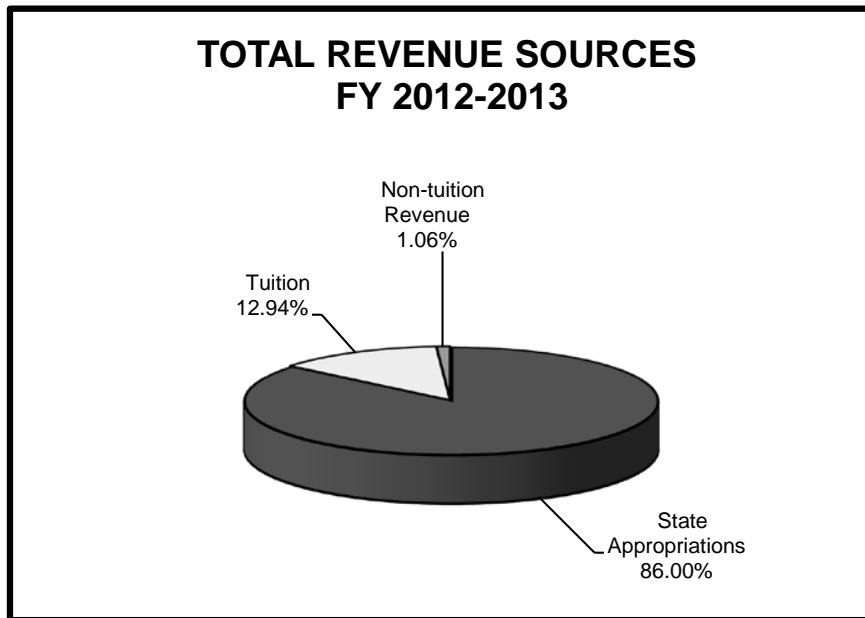


**TABLE/GRAPH 40.**

**SCHOOL OF APPLIED TECHNOLOGY  
2012-2013 TOTAL REVENUE SOURCES AND EXPENDITURES**

REVENUE SOURCES	
State Appropriations	\$ 5,880,600
Tuition	884,601
Non-tuition Revenue	72,357
<b>TOTAL</b>	<b>\$ 6,837,558</b>

EXPENDITURES	
Instruction	\$ 3,834,446
Student Services	1,130,313
Academic Support	142,272
Institutional Support	453,099
Plant Operations	461,948
<b>TOTAL</b>	<b>\$ 6,022,078</b>



**TABLE 41.**

**NON-CREDIT STUDENT ENROLLMENT**

(Includes offerings from Division of Continuing Education, Institute of Public Safety, and Economic Development and Business Partnerships)

PROGRAM OR COURSE	2008-09	2009-10	2010-11	2011-12	2012-13
<b>NON-CREDIT BY PROGRAM SUBJECT CODE</b>					
CEAB - Accelerated Business Program Fee			140	149	92
CEAE - Alternative Energy Sources					39
CEAL - ARL	157	143	109	75	84
CEAS - ASL	159	271	60		
CEAT - - ATE - CTE	37	27	30	33	16
CEBC - Small Business Center Training	223	527	528	646	540
CECD - CAD	49	35	94	93	41
CECO - Composites				2	11
CECT - Contractor's License Renewal	418	661	46	578	303
CECW - Computer Workshops	597	561	662	562	459
CEDM - Digital Media		3	29	21	2
CEEI - Encore Institute		7	164	94	194
CEEM - Energy Management				22	46
CEEU - CEU's		59	87	70	52
CEGA - Green Academy		5			
CEGN - Genealogy		2	11	5	9
CEHI - Health Information Technology			97	86	
CEHS - Human Services		6	17	40	34
CEHW - Health Wellness		24	6	53	66
CEHZ - Alternative Energy Sources	120	216	179	140	131
CEIB - International Business	3	1	3	1	1
CEIP - Motorcycle Safety	1130	831	562	655	800
CEIP - Public Safety	203	246	259	239	150
CELN - Lineman		16			80
CELS - Library Information Science			2		4
CEME - Metering					20
CEMG - Ed-2-Go		30	29	7	
CEMS - Notary Training	254	207	94	104	115
CEPD - Professional Development	122	180	332		
CEPW - Professional Workshops (Summit)	57	47	29		
CERA - Real Estate	4				
CESB - Small Bus Dev Ctr (State)		20	12	8	
CESG - Smart Grid/Electric Sector				176	226
CESN - Substation					34
CESO - Sonography				89	37
CESP - State Energy Sector Partnership Grant			320	1226	452
CESS - Safety & Emissions		9	447	530	507
CESU - Sustainability	29	1	4	5	
CETG - Ed to Go/Computer Training	331	292	470	512	487
CETR - Transportation Training UDOT/UTA/UPRR	3419	1265	1096	1221	1249
CETS - Health Info Tech Support			53	13	
CEWB - Women's Business Institute	67	173	145		
<b>CEST - STIT</b>	<b>739</b>	<b>853</b>	<b>481</b>	<b>685</b>	<b>652</b>
<b>CUSTOM FIT TRAINING</b>	<b>1,514</b>	<b>1,277</b>	<b>1,774</b>	<b>2,045</b>	<b>2,148</b>
<b>NON-CREDIT NON PROGRAM SUBJECT CODE</b>					
GS 10KSB Module Training					528
GS 10KSB Information Sessions, etc.					983
Program Events		1,137	1,205	222	706
TSA Training	27				
Small Business Assistance	388	599	824	948	716
Salt Lake Airport Training	159				
Ford Training Center (Outreach)	600	427	557	469	469
<b>NON-CREDIT ACADEMIC OFFERINGS</b>	<b>14</b>				
<b>COMBINED TOTALS</b>	<b>10,820</b>	<b>10,158</b>	<b>10,957</b>	<b>11,824</b>	<b>12,483</b>

NOTE: Some duplication may occur within Program Subject Code.

# SLCC LOCATIONS

**Community Writing Center (CWC)**  
in Library Square  
210 East 400 South  
Salt Lake City, Utah 84111  
(801) 957-2192

**Highland Center (HLDC)**  
3760 South Highland Drive  
Salt Lake City, Utah 84110  
(801) 957-2100

**International Aerospace/Aviation  
Education Center (AP)**  
551 North 2200 West  
Salt Lake City, Utah 84116  
(801) 957-2050

**Jordan Campus (JC)**  
3491 West Wights Fort Road  
West Jordan, Utah 84088-8818  
(801) 957-2600

**Library Square Center (LSC)**  
231 East 400 South  
Salt Lake City, Utah 84111  
(801) 957-2000

**Meadowbrook Campus (MBC)**  
250 West 3900 South  
Salt Lake City, Utah 84107  
(801) 957-5821

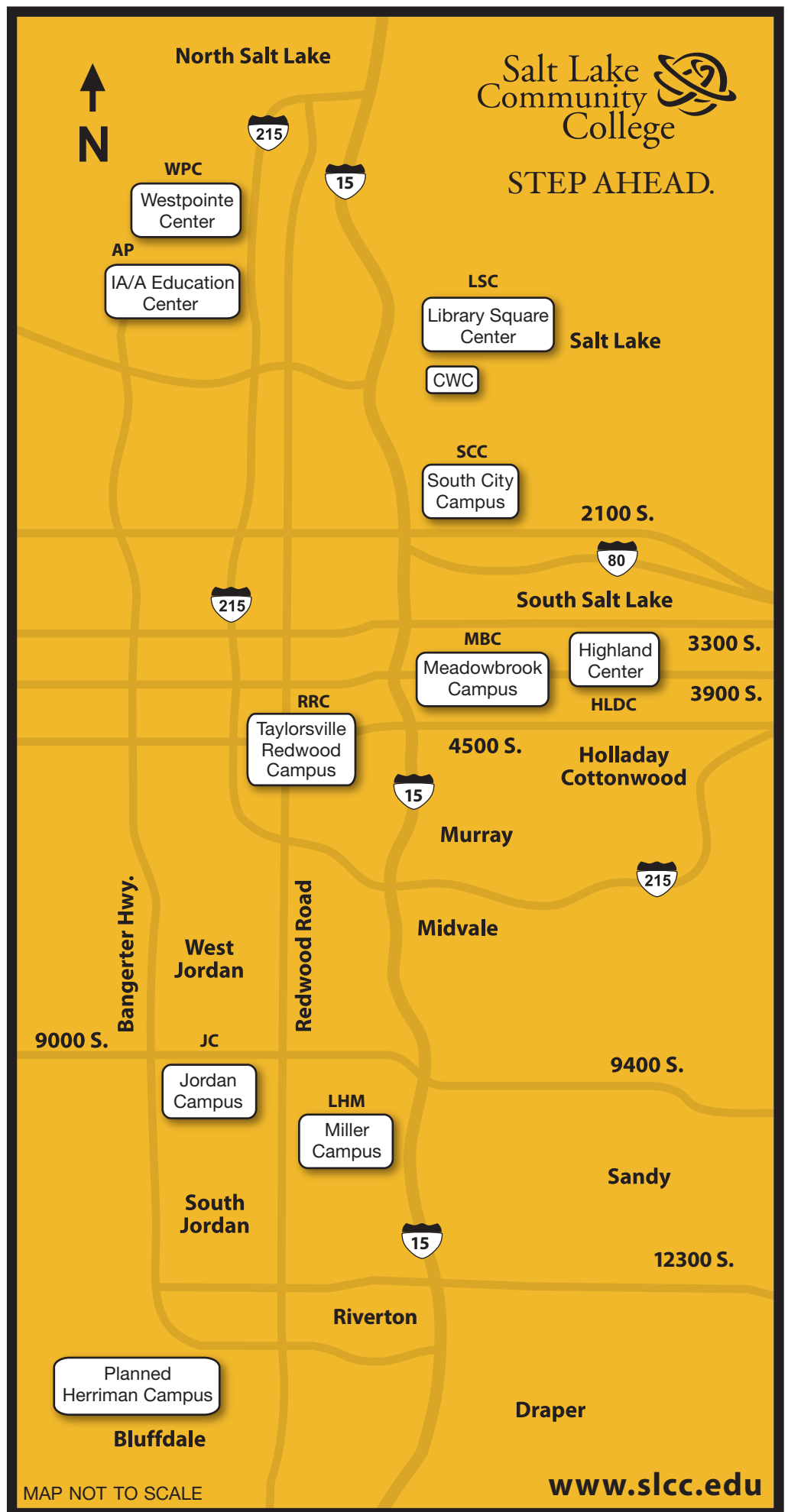
**Miller Campus (LHM)**  
9750 South 300 West  
Sandy, Utah 84070  
(801) 957-5200

**SLCC Online**  
[www.slcc.edu/online](http://www.slcc.edu/online)  
(801) 957-4406

**South City Campus (SCC)**  
1575 South State Street  
Salt Lake City, Utah 84115  
(801) 957-4111

**Taylorville Redwood Campus (RRC)**  
4600 South Redwood Road  
Salt Lake City, Utah 84123  
P.O. Box 30808  
Salt Lake City, Utah 84130-0808  
(801) 957-4111

**Westpointe Center (WPC)**  
2150 West Dauntless Avenue  
Salt Lake City, Utah 84116  
(801) 957-2150



MAP NOT TO SCALE

[www.slcc.edu](http://www.slcc.edu)