

Salt Lake Community College

Salt Lake Community College Library Digital Archives

College Fact Books Archives

SLCC History

2004

Fact Book 2004-2005: Salt Lake Community College

Salt Lake Community College

Follow this and additional works at: <https://libarchive.slcc.edu/factbooksarch>



Part of the [Adult and Continuing Education Commons](#), [Educational Assessment, Evaluation, and Research Commons](#), [Institutional and Historical Commons](#), and the [Vocational Education Commons](#)

FACT BOOK

2004-2005



Comprehensive Community College

WE KNOW WHO WE ARE

Salt Lake Community College is committed to:

- Serving all segments of society through an open-access admissions policy that offers equal and fair treatment to all students
- A comprehensive educational program
- Serving its community as a community-based institution of higher education
- Teaching
- Lifelong learning

We achieve these commitments through a proven structure that integrates six important educational components-what we like to call “The Six Pillars of a Community College:”

- Developmental Education
- Career and Technical Education
- General Education and Transfer Programs
- Adult and Community Education
- Community Services Education
- Student Services

Administration

Judd D. Morgan, Interim President

Donald L. Porter, Vice President of Business Services

David Richardson, Vice President of Academic Services

Denece Huftalin, Interim Vice President of Student Services

Brent H. Goodfellow, Vice President of Community, State & National Affairs

Board of Trustees

David G. Thomas, Chair

Peter R. Genereaux, Vice Chair

Beau Babka, Alumni President

Anthony White, Studentbody President

Jesselie B. Anderson

Richard Bradford

Jeff Edwards

Leticia Medina

Gail Miller

Stanley B. Parrish

SALT LAKE COMMUNITY COLLEGE 2004-2005 FACT BOOK

INTRODUCTION.....	1
SLCC STRATEGIC VISION.....	2

TAB A. STUDENT ENROLLMENT

GRAPH 1	Salt Lake Community College Enrollment Trends	7
TABLE 1	Salt Lake Community College Enrollment Trends	8
TABLE 2A	Enrollment Summary - Summer Term	9
TABLE 2	Enrollment by Academic Dept - Summer Term FTE=s.....	10
TABLE 3A	Enrollment Summary - Fall Semester	11
TABLE 3	Enrollment by Academic Dept - Fall Semester FTE=s.....	12
TABLE 4A	Enrollment Summary - Spring Semester	13
TABLE 4	Enrollment Summary - Spring Semester	14
TABLE 5	2003-2004 Enrollment by Summer Term - Fall Composite - Spring Composite (Annualized FTE=s).....	15
TABLE 6	Enrollment by Academic Dept - Annualized FTE=s	16
GRAPH 7	Student Headcount Enrollment per Credit Hour.....	17
TABLE 7	Student Headcount Enrollment per Credit Hour.....	18
TABLE 8	Average Credit Hours Taken	19

TAB B. STUDENT DEMOGRAPHICS

TABLE 9	Student Enrollment by Majors.....	20
TABLE 10	Student Enrollment by Majors and by Gender	21

TABLE OF CONTENTS

-Continued-

TAB B. STUDENT DEMOGRAPHICS

GRAPH 11	Where Students Live by Zip Code	22
TABLE 11	Where Students Live by Zip Code	23
TABLE 12	Student Distribution by Age and Gender	24
TABLE 13	Student Distribution by Racial Background and Gender	25
TABLE/ GRAPH 14	Male to Female Ratios	26
TABLE/ GRAPH 15	Veterans Currently Eligible to Receive Benefits by Academic Classification	27
TABLE 16	Average Age of Students	28

TAB C. FACULTY/STAFF INFORMATION

TABLE 17	2003-2004 Student/Faculty Ratios	29
GRAPH 18	Student/Faculty & Student/Staff Ratios - Salt Lake Community College	30
TABLE 18	Student/Faculty & Student/Staff Ratios - Salt Lake Community College	31
TABLE 19	Salaried Personnel Budgeted FTE by Index Codes, by Gender, and by Faculty/Staff (Ed and General Indexes)	32
TABLE 20	Salaried Personnel Budgeted FTE by Index Codes, by Gender, and by Faculty/Staff (Service Enterprises/Auxiliary, Designated, Restricted, Agency Funds, and Skills Center Funded Indexes)	36
TABLE 21	2004-2005 Faculty Information including Tenure, Ranking, Educational Credentials and Male/Female Ratios	38

TABLE OF CONTENTS

-Continued-

TAB D. DEGREES AND AWARDS

TABLE 22	Distribution of Graduates by Degree and by Major	39
TABLE 23	Distribution of Graduates by Degree, by Major and by Gender	40

TAB E. FINANCIAL INFORMATION

TABLE 24	Current and Historical Tuition and Fee Schedule for Salt Lake Community College.....	41
TABLE 25	Cost Per Student Credit Hour by Department (Instructional Cost).....	42
TABLE 26	Cost Per FTE by Department (Instructional Cost).....	43
TABLE 27	Costs Per FTE - Current and Adjusted for Inflation.....	44
TABLE 28	Financial Aid Information	45
TABLE/ GRAPH 29	2003-2004 Revenue Sources & Expenditures (E & G)	46
TABLE/ GRAPH 30	2003-2004 Revenue Sources & Expenditures (Total).....	47

TAB F. FACILITIES

TABLE/ GRAPH 31	Building Profile Instructional Buildings Redwood Road Campus.....	48
TABLE/ GRAPH 32	Building Profile All Campus Locations	49

TAB G. STUDENT INPUT

	Explanation of Student Follow-Up Systems	50
TABLE 33	2003-2004 New Student Survey Summary	51
TABLE 34	2003-2004 Student Follow-Up Survey Summary (Non-Retuning)	53
TABLE 35	2003-2004 Graduating Student Survey Summary	55

TAB H. SKILLS CENTER

	Introduction SLCC Skills Center	56
	SLCC Skills Center Vision Statement	60
TABLE 36	SLCC Skills Center Enrollment Trends	62
TABLE 37	SLCC Skills Center Student Demographics	63
TABLE/ GRAPH 38	SLCC Skills Center Revenue Sources & Expenditures (Total)	64

INTRODUCTION

The purpose of the fact book is to provide official information about Salt Lake Community College. Where possible, several years of historical data have been presented to provide perspective and to show trends.

It should be noted that given the complexities and size of SLCC and the multiple special data bases that are being used, when interpreting data appearing in this book care should be taken to ensure the data base is correct for the purpose for which the data is used. The fact book represents the official numbers of Salt Lake Community College.

The organization of the data is as follows:

Tab A.	Student Enrollment Information
Tab B.	Student Demographic Information
Tab C.	Faculty/Staff Information
Tab D.	Degrees and Awards
Tab E.	Financial Information
Tab F.	Facilities Information
Tab G.	Student Input
Tab H.	SLCC Skills Center

The fact book was prepared by Debbie Summers from Institutional Research.



STRATEGIC VISION September 2001 – June 2006

Institutional Goals, Objectives, and Strategies

Six strategic goals have been identified for Salt Lake Community College. These goals encompass the four strategic initiatives identified at the management retreat and two additional goals considered to be of particular importance to the college. The goals are broad statements that describe how the college will carry out its mission as “the community’s college.” Objectives and strategies have been formulated for each goal. Objectives describe major initiatives the college will undertake in order to achieve each goal. Strategies describe how the college will go about achieving each goal and related objectives. The goals, objectives, and strategies reflect the changing needs of the community. They describe how the college will build on its strengths in order to pursue opportunities identified in the institutional analysis and the manner in which it plans to address challenges.

Goal I: A Learning College

Salt Lake Community College will be a dynamic, learning-centered college characterized by a diverse assortment of innovative learning experiences, instructional methods, and delivery systems designed to bring all members of the college community together in a culture of learning with a commitment to continuous improvement.

In order to achieve this goal, the college will pursue the following objectives:

- Establish standards to define college-wide learning outcomes for degree and certificate programs and encourage divisions and departments to develop curriculum specific learning outcomes
- Invest in academic programs, curricula, and support services with demonstrated or potential excellence that meet the learning needs of students and discontinue those that do not
- Support the efforts of academic divisions and departments to develop and provide alternative learning experiences such as collaborative learning, service learning, portfolio assessment, and learning communities
- Promote instructional and institutional excellence through a program of faculty and staff development activities and a climate that assumes continuous improvement
- Develop multiple measures of institutional effectiveness in a comprehensive system that links planning, budgeting, implementation, and evaluation in a cycle that emphasizes improvement
- Generate additional resources from external sources through the activities of the college foundation, grants, and partnerships with public and private organizations



Five major strategies define the manner in which the college will seek to achieve this goal and objectives:

- Recruit, develop, evaluate, and reward a highly qualified faculty and staff dedicated to institutional excellence and student learning
- Revitalize traditional classrooms and laboratories to ensure that college facilities support new instructional strategies such as learning communities and technology-based instruction
- Invest in student-support services that increase student retention and student success in a learning environment
- Adopt policies and practices that foster internal cooperation and collaboration in order to ensure the best use of all college resources
- Focus faculty development efforts on teaching improvement by providing training and mentoring that encourage the enhancement of pedagogical skills and recognizing outstanding classroom teaching

Goal II: Career Education

Salt Lake Community College will provide a contemporary assortment of career-oriented degree and certificate programs and credit and non-credit courses that are designed to ensure that graduates have the skills and knowledge needed to enter and advance in high-demand occupations.

The college has identified three primary objectives that will enable the institution to achieve this goal:

- Maintain the highest standards of excellence by providing industry standard equipment and facilities for all career-oriented instructional programs, requiring periodic curriculum revitalization and ensuring that faculty have opportunities to maintain cutting-edge skills in their fields
- Respond to the emerging needs of growing employee segments by creating high demand, high skill associate degree and certificate programs which utilize industry standard equipment in a facility suited to the unique needs of this industry
- Develop and implement review processes to ensure that existing degree and non-degree programs meet the standards of career preparation for high-demand occupations that require complex skills

In order to achieve this goal and related objectives, the college plans to implement the following major strategies:

- Maximize the use of college resources by consolidating related programs in order to eliminate duplication of services and make the most effective use of staff and physical facilities
- Establish thresholds for enrollment, completion, and related placement rates in order to identify programs that no longer meet student and community needs as well as high growth programs that merit expansion.



- Monitor changes in the economic base of the community in order to identify emerging high-skill industries and to initiate the new programs and services that will meet their needs and foster economic growth
- Seek accreditation from professional and academic organizations that set national standards for degree and certificate programs
- Partner with other educational and community-based organizations that may be better positioned to serve individuals seeking entry-level skills
- Establish industry partnerships that provide faculty and related staff with professional development opportunities to maintain cutting edge, industry-related skills
- Create collaborative programs with employers that ensure employer representatives are active partners in curriculum review and revision

Goal III: Technology

Salt Lake Community College will make optimum use of technology to enhance learning and maximize the effectiveness and efficiency of college operations.

In order to achieve this goal the college has established five objectives:

- Invest in the technology infrastructure of Salt Lake Community College so that all members of the college community have access to state-of-the-art facilities and capabilities
- Provide ongoing training and mentoring for faculty who seek to incorporate technology-based instructional strategies or materials into their classrooms
- Expand the number and scope of offerings available through distance education in order to effectively reach individuals who find this delivery system better suited to their needs and learning styles as well as a cost effective way to meet the needs of a rapidly growing student population
- Establish an endowed chair for technology leadership in order to provide a high level of expertise and leadership for the college and the community
- Utilize current and emerging technologies to provide all members of the community with immediate access to an extensive collection of learning resources

Five strategies define the manner in which the college will seek to achieve this goal and objectives:

- Implement policies and procedures to guide institutional decisions on the acquisition of new capabilities, equipment, and software to ensure compatibility with existing platforms and provide adequate support for users
- Establish technology innovation groups in order to test new ideas, disseminate results, and serve as mentors for others who wish to implement new applications of technology in both instruction and institutional management



- Invest in facilities and equipment that will enable faculty and staff to utilize technology as an instructional tool
- Seek new resources in order to ensure that all technology-based instructional equipment is comparable to that in use at transfer institutions and the workplace
- Actively seek partnerships and other collaborative opportunities that will position the college as a technology leader in higher education and in employee training

Goal IV: Diversity

Salt Lake Community College will enrich the educational experience of all learners by respecting and encouraging diversity.

In order to achieve this goal the college has identified two objectives that it will pursue in the next five years:

- Provide a safe and welcoming climate for a culturally- and ethnically-diverse college community where all individuals have the opportunity to achieve their educational goals
- Offer courses and other educational experiences that introduce students to the history, culture, and contributions of all cultures; encourage and support faculty efforts to integrate materials or activities that enhance understanding and respect for differences in new and existing courses and curricula

Three major strategies will influence the manner in which the college seeks to achieve this goal and objectives:

- Establish, maintain, and regularly review personnel policies to actively recruit and welcome applicants and employees who are ethnic and cultural minorities as well as mechanisms to support and value their contributions to the college
- Invest in innovative projects on the department and division level that enable the college to be proactive in its efforts to attract and serve a diverse student population
- Implement an international program that provides learning experiences for students and faculty on the Salt Lake and Tooele campuses as well as those participating in an exchange experience

Goal V: A Partner in the Community

Salt Lake Community College will be a leader in the economic, cultural, and educational life of the greater Salt Lake and Tooele communities and will partner with other organizations to share its resources and expertise in order to fulfill its mission as the community's college.

In order to achieve this goal, the college will pursue the following objectives:



- Respond quickly to the workforce education needs of area employers with a variety of customized programs designed to train new entrants into the workforce and upgrade the skills of current employees
- Actively encourage community residents, employers, organizations and under represented groups to participate in college-sponsored events and to utilize the college resources to pursue their personal and organizational educational goals
- Pursue those opportunities that allow the college to make a major contribution to a project and, at the same time, develop new capabilities and relationships that will help the institution to better achieve its mission

Two major strategies define the manner in which the college will seek to achieve this goal and objectives:

- Emphasize partnerships as a strategy for improving the scope and quality of educational services in a cost-effective manner
- Encourage individuals as well as divisions and departments to seek out opportunities to be active participants in relevant community and professional organizations

Goal VI: Marketing and Public Relations

Salt Lake Community College will foster a strong, positive, and consistent image as a vigorous, innovative organization that meets student, employer, community, and regional needs with an impressive assortment of contemporary programs and services.

Two objectives define how the college will achieve this goal:

- Determine the major institutional attributes or qualities that best define the image of Salt Lake Community College and the organizational vision, strengths, and accomplishments that reinforce the desired image
- Prepare and implement a marketing/public relations plan that defines key constituencies (prospective students, business leaders, employers, the legislature, and the community at large), establishes objectives, and identifies themes and strategies for communicating with each of these groups

Three major strategies describe how the college will achieve this goal and objectives:

- Develop a consistent graphic image and promotional themes that will be used to promote all aspects of the college and the services it provides
- Review current practices and budgets in order to define the relationship of department or division efforts to recruit students, promote programs, and promote the college's efforts to maintain a consistent and clear image in the community; develop and implement policies that ensure that marketing efforts are consistent and coordinated
- Prepare an annual implementation plan that defines how the college will communicate with all of its constituent groups and provides an institutional budget to support the implementation of the plan

GRAPH 1.

SALT LAKE COMMUNITY COLLEGE ENROLLMENT TRENDS

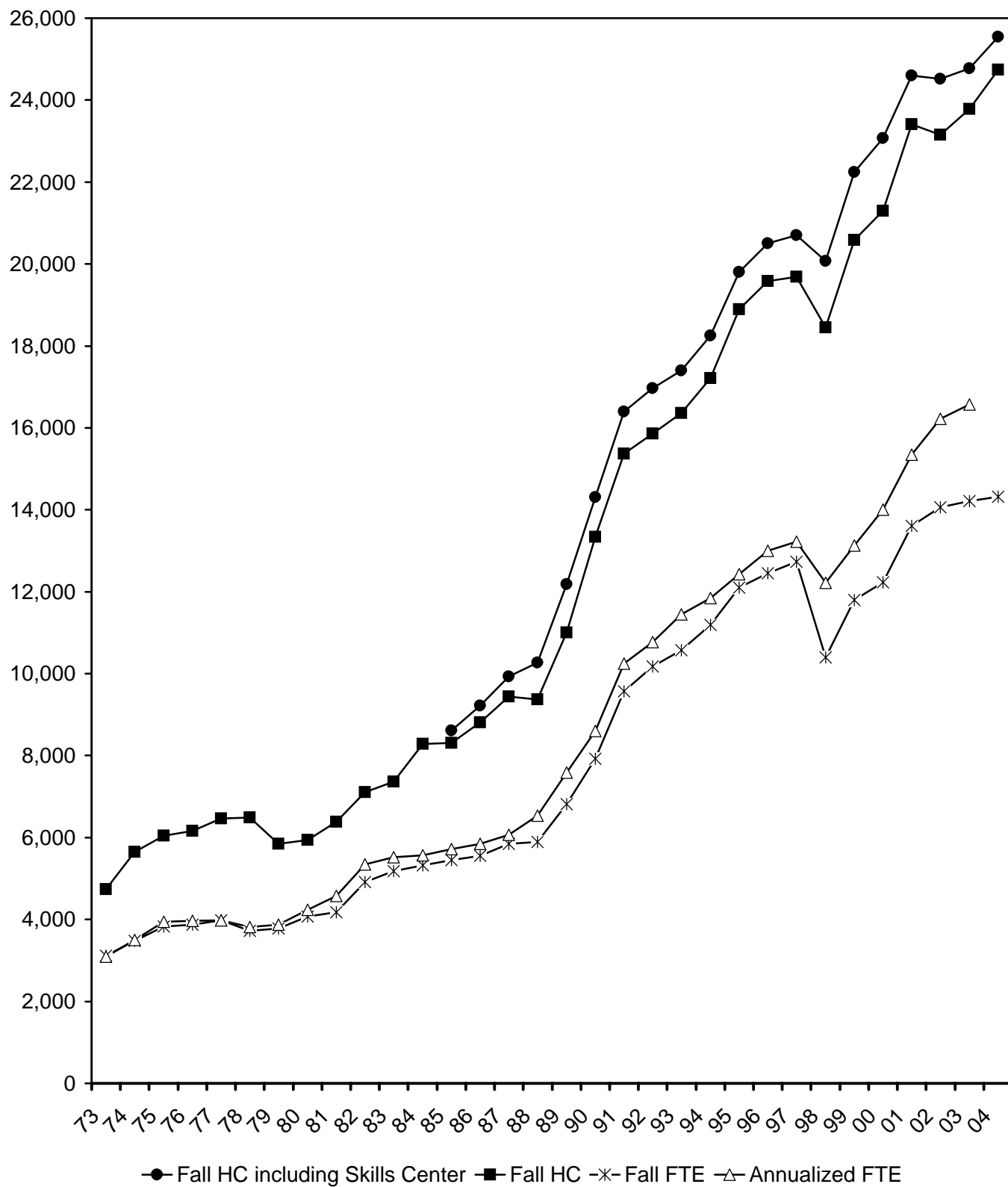


TABLE 1.
SALT LAKE COMMUNITY COLLEGE
ENROLLMENT TRENDS

YEARS	FALL HEADCOUNT THIRD WEEK			FALL FTE THIRD WEEK			AFTE'S	ANNUALIZED UNDUPLICATED HEADCOUNT
	RESIDENTS	NON- RESIDENTS	TOTAL	RESIDENTS	NON- RESIDENTS	TOTAL		
ACTUALS								
1973-74	4639	95	4734	3014	103	3117	3093	
1974-75	5552	92	5644	3370	103	3473	3505	
1975-76	5964	83	6047	3732	95	3827	3939	
1976-77	6043	115	6158	3746	126	3872	3964	
1977-78	6331	132	6463	3843	136	3979	3974	
1978-79	6334	153	6487	3566	151	3717	3814	
1979-80	5722	126	5848	3638	139	3777	3870	
1980-81	5853	84	5937	3984	91	4075	4238	
1981-82	6313	70	6383	4105	74	4179	4573	12240
1982-83	7045	63	7108	4854	58	4912	5341	13152
1983-84	7308	52	7360	5127	49	5176	5522	14459
1984-85	8244	45	8289	5280	37	5317	5563	13981
1985-86	8243	64	8307	5402	53	5455	5720	13712
1986-87	8756	59	8815	5511	43	5554	5845	13388
* 1987-88	9389	47	9436	5808	40	5848	6073	15297
1988-89	9294	73	9367	5840	53	5893	6530	15769
1989-90	10900	103	11003	6733	86	6819	7584	18843
1990-91	13028	316	13344	7745	173	7918	8596	22256
1991-92	15089	285	15374	9337	232	9569	10243	24794
1992-93	15558	304	15862	9937	243	10180	10775	25018
1993-94	15980	384	16364	10253	322	10575	11449	26365
1994-95	16765	447	17212	10816	378	11194	11846	27956
1995-96	18351	537	18888	11664	432	12096	12431	30643
1996-97	18948	634	19582	11964	488	12452	13002	32652
1997-98	19017	674	19691	12189	542	12731	13216	31816
** 1998-99	17816	637	18453	9949	452	10401	12220	29192
1999-00	19910	673	20583	11304	495	11799	13131	32845
2000-01	20593	701	21294	11718	509	12227	14004	34447
2001-02	22551	863	23414	13011	593	13604	15351	35225
2002-03	22552	602	23154	13689	373	14062	16223	35953
2003-04	22928	849	23777	13624	589	14213	16571	36021
2004-05	23384	1356	24740	13645	675	14320		

NOTE: * 1987-88 to 2004-05 actuals are "Budget Related Totals", not the "Institution FTE and HC Totals"

** Semester Conversion

SOURCE: 1972-73 to 1984-85 Utah Board of Regents' Recommended Operating Budgets
1985-86 to 2004-05 Utah Board of Regents' Official Reports

TABLE 2A.

**SUMMER TERM, 2004-2005
OFFICIAL ENROLLMENT SUMMARY (BUDGET RELATED)**

	<u>AVERAGE</u>	<u>HC</u>	<u>%</u>	<u>FTE</u>	<u>%</u>
2004-05 SUMMER TERM OFFICIAL #'S (BUDGET RELATED IPEDS)		10654		4640.0	
2004-05 SUMMER TERM OFFICIAL #'S (BUDGET RELATED NON-IPEDS)**					
2004-05 SUMMER TERM OFFICIAL #'S (BUDGET RELATED TOTAL)		10654 ***		4640.0	
2004-05 Summer Term Enrollment Targets & % Complete		11100	96.0%	4800.0	96.7%
2003-04 Summer Term Official #'s & % Completed		11009	96.8%	4766.0	97.4%
<u>AVERAGE CREDIT HOURS TAKEN</u>					
Resident	6.47	10067	94.5%	4344.0	93.6%
Non-Resident	7.56	587	5.5%	296.0	6.4%
Total	6.53	10654		4640.0	
<u>AVERAGE AGE OF STUDENTS *</u>					
Resident	26.92				
Non-Resident	26.89				
<u>MALE TO FEMALE RATIO</u>					
Male		5148	48.3%		
Female		5506	51.7%		
Total		10654			
<u>WHERE STUDENTS COME FROM</u>					
Salt Lake County		7891	74.1%		
Utah Excluding SL County		2176	20.4%		
US excluding Utah & Foreign Countries		587	5.5%		
Total		10654			
<u>LEVELS OF STUDENTS</u>					
First Time Freshmen		990	9.3%		
Other Freshmen		1759	16.5%		
Sophomores		7905	74.2%		
Total		10654			

* Age is not a completely accurate figure in that some students choose not to release this information.

** Budget Related Non-IPEDS = Budget Related Non-Credit STIT

*** Budget Related Total Headcount will not match Budget Related IPEDS & Non-IPEDS subtotals.

A student is only counted once in the Budget Related Total. A student in both Budget Related types is counted in both.

TABLE 2.

ENROLLMENT BY ACADEMIC DEPARTMENT - SUMMER TERM FTE'S

DEPARTMENT	00-01	01-02	02-03	03-04	04-05
Accounting	52.7	55.8	74.3	79.0	75.0
Apprenticeship/Carpentry-Millwright	8.7	0.3			
Apprenticeship/Culinary Arts	15.2	8.1	12.0	7.2	14.9
Apprenticeship/Culinary Arts (Prison)		8.0	6.9	8.4	9.2
Apprenticeship/Electricity-Instrumentation	48.3	37.0	42.1	8.3	10.3
Apprenticeship/General		3.4	2.3	16.1	4.9
Apprenticeship/HVAC	4.0	0.2	1.7	1.0	1.0
Apprenticeship/Ironworkers		15.3	12.0	4.0	
Apprenticeship/Machinist	0.3				
Apprenticeship/Plumbers-Pipefitters	14.3	17.4	16.3	12.7	8.3
Apprenticeship/Sheet Metal		2.3			
Apprenticeship/Telecommunication					1.2
Architectural Tech	30.8	16.0	21.6	14.2	13.6
ASL/Interpreting	9.6	8.6	9.1	5.6	3.7
Automotive Technician	29.5	4.0	8.0	1.8	
Automotive Technician (Prison)		11.6	16.2	11.8	14.4
Aviation Maintenance Tech	25.2	35.8	29.5	42.7	35.0
Aviation Technology/Professional Pilot	15.3	16.0	32.4	11.2	10.6
Barbering/Cosmetology	145.7	144.0	210.3	233.6	241.0
Biology	170.1	196.4	211.6	323.0	364.7
Biotechnology		0.8	0.5		1.9
Bldg Construction (Prison)		35.9	60.1	33.3	31.1
Bldg Construction/Construction Mgt	96.8	10.9	15.9	18.3	19.6
Business Communication	15.8	9.2	4.2		
Business Economics	53.6	90.4	106.6	121.9	108.4
Business Info Technology	34.2	37.2	10.7		
Business Management	83.8	87.9	95.7	132.9	116.8
Business Math	20.8	21.0	27.2		
Chemistry	79.2	111.5	151.7	207.9	199.7
Communication	143.6	171.0	190.6	222.1	192.6
Computer Info Systems	85.9	163.1	145.9	174.6	162.5
Computer Science	105.0	55.0	37.4	19.0	12.5
Criminal Justice	45.5	62.7	53.9	98.1	131.1
Developmental Education	323.2	399.6	404.2	419.7	413.2
Diesel Systems Technology					2.0
Electrical & Instrumentation Tech	13.9	16.8	20.0	12.4	10.1
Electronics (Prison)		0.5	23.5	32.9	18.4
Electronics/Telecommunications	11.1	17.9	12.9	20.1	15.3
Engineer Des/Draft Tech/Arch Tech (Prison)		16.5	27.0	21.9	21.0
Engineering	14.5	26.9	20.5	31.1	42.5
Engineering Design/Drafting Tech	17.5	14.9	15.1	14.1	4.5
English	238.6	300.0	319.8	338.1	335.2
English Second Language	31.7	59.9	33.5	20.6	20.8
Environmental Technology	6.6	11.8	4.6	8.2	6.2
Family & Human Studies	22.5	25.8	33.4	21.1	24.7
Finance and Credit	34.8	33.5	47.6	58.3	51.4
Fine Arts	93.6	102.9	105.5	108.3	110.0
Geosciences	56.6	68.1	70.4	82.0	74.0
Graphic Communication	15.1	15.6			
Health & Lifetime Activities	86.8	109.3	120.9	228.9	198.7
History	84.5	87.8	71.4	96.8	94.6
Humanities	102.1	122.0	139.2	135.3	153.0
Languages	71.4	68.6	63.5	67.3	74.9
Manufacturing & Automation Tech	4.9	3.1	4.6		
Marketing	9.0	10.6	15.1	16.3	28.5
Mathematics	354.3	458.1	530.2	583.0	516.0
Medical Assistant/Medical Admin Assl	31.9	42.9	41.5	64.8	53.9
Medical Lab Technology	1.0	2.0	7.0	8.0	6.0
Non-Destructive Testing Tech		0.3	33.6		
Nursing	24.5	22.4	14.4	20.2	15.1
Occupational Therapy Assl	0.4	1.5	2.8	0.9	3.8
Paralegal Studies	18.3	21.2	29.9	30.4	35.5
Physical Therapist Assl	12.0	16.1	14.3	18.8	19.6
Physics	91.9	79.5	80.2	80.0	87.2
Political Science	27.1	23.7	30.7	35.8	36.7
Pre-Teacher Education	2.6	16.3	10.6	5.2	4.8
Psychology	96.5	88.4	109.6	131.6	143.5
Radiologic Technology	7.0	11.7	9.7	12.7	18.9
Short-Term Intensive Training	70.0	56.0			
Social Work	5.6	5.6	13.1	6.6	10.6
Sociology	59.4	69.3	76.5	91.4	87.0
Surgical Technology		6.0			
Surveying		0.4			
Veterinary Technician		4.4	1.2		
Visual Art & Design	95.2	122.7	156.1	131.0	113.3
Visual Art & Design (Prison)		1.6	11.1	3.5	5.1
Welding			1.1		
COLLEGE GRAND TOTALS	3470.0	3999.0	4333.0	4766.0	4640.0

NOTE: These numbers include non-credit producing FTE's excluding any non-budget related FTE

SOURCE: Official End of Term Enrollment Summary by Departments, 2000-2001 to 2004-2005

TABLE 3A.

FALL SEMESTER, 2004-2005
OFFICIAL ENROLLMENT SUMMARY (BUDGET RELATED)

	<u>AVERAGE</u>	<u>HC</u>	<u>%</u>	<u>FTE</u>	<u>%</u>
2004-05 FALL SEMESTER OFFICIAL #'S (BUDGET RELATED IPEDS)		24199		14320.0	
2004-05 FALL SEMESTER OFFICIAL #'S (BUDGET RELATED NON-IPEDS)**		627			
2004-05 FALL SEMESTER OFFICIAL #'S (BUDGET RELATED TOTAL)		24740 ***		14320.0	
2004-05 Fall Semester Enrollment Targets & % Completed		24300	101.8%	14568.0	98.3%
2003-04 Fall Semester Official #'s & % Completed		23777	104.1%	14213.0	100.8%

AVERAGE CREDIT HOURS TAKEN

Resident	8.75	23384	94.5%	13645.0	95.3%
Non-Resident	7.47	1356	5.5%	675.0	4.7%
Total	8.68	24740		14320.0	

AVERAGE AGE OF STUDENTS *

Resident	25.93
Non-Resident	25.91

MALE TO FEMALE RATIO

Male	12771	51.6%
Female	11969	48.4%
Total	24740	

WHERE STUDENTS COME FROM

Salt Lake County	17633	71.3%
Utah Excluding SL County	5751	23.2%
US Excluding Utah/Foreign Countries	1356	5.5%
Total	24740	

LEVELS OF STUDENTS

First Time Freshmen	4465	18.0%
Other Freshmen	6199	25.1%
Sophomores	14076	56.9%
Total	24740	

* Age is not a completely accurate figure in that some students choose not to release this information.

** Budget Related Non-IPEDS = Budget Related Non-Credit STIT

*** Budget Related Total Headcount will not match Budget Related IPEDS & Non-IPEDS subtotals.

A student is only counted once in the Budget Related Total. A student in both Budget Related types is counted in both.

TABLE 3.**ENROLLMENT BY ACADEMIC DEPARTMENT - FALL SEMESTER FTE'S**

DEPARTMENT	00-01	01-02	02-03	03-04	04-05
Accounting	234.3	247.4	257.5	261.5	250.1
Apprenticeship/Boilermakers	11.6				0.3
Apprenticeship/Carpentry-Millwright	17.3	23.3	14.0	3.0	8.0
Apprenticeship/Culinary Arts	37.8	37.5	31.5	46.3	48.7
Apprenticeship/Culinary Arts (Prison)		19.8	4.7	10.0	7.2
Apprenticeship/Electricity-Instrumentation	145.6	151.2	116.2	95.5	96.5
Apprenticeship/General	16.7	24.2	19.7	17.8	19.1
Apprenticeship/HVAC	18.5	12.7	12.7	12.6	13.7
Apprenticeship/Ironworkers		4.0	11.0	4.0	
Apprenticeship/Machinist	4.0	10.7	3.3	0.7	2.0
Apprenticeship/Plumbers-Pipefitters	179.0	183.2	83.0	120.4	110.3
Apprenticeship/Sheet Metal	28.3	20.7	20.7	0.3	
Apprenticeship/Stage Hands	13.3	11.7	6.0	3.7	7.3
Architectural Tech	128.5	101.7	107.1	99.7	92.9
ASL/Interpreting	53.2	47.5	50.3	48.3	46.6
Automotive Collision Repair & Painting	24.3	26.3	21.7	30.7	29.6
Automotive Technician	90.4	55.7	79.3	75.4	77.2
Automotive Technician (Prison)		46.6	39.7	44.0	34.0
Aviation Maintenance Tech	71.5	105.9	92.3	100.6	74.0
Aviation Technology/Professional Pilot	55.3	57.5	47.7	46.2	40.3
Barbering/Cosmetology	218.1	217.7	280.2	308.9	311.6
Biology	584.6	699.2	958.2	1031.8	1067.4
Biotechnology		2.6	13.9	18.1	19.5
Bldg Construction/Construction Mgt	125.4	48.4	57.0	64.7	61.0
Bldg Construction (Prison)		103.8	63.1	80.7	65.7
Business Communication	40.7	32.4	17.9		
Business Economics	195.0	232.8	261.0	281.8	238.4
Business Info Technology	141.0	133.1	3.3		
Business Management	287.3	305.7	324.9	362.8	367.7
Business Math	64.8	70.9	71.6		
Chemistry	247.9	280.3	343.7	406.3	396.4
Communication	431.2	444.1	602.2	636.5	588.8
Computer Info Systems	419.9	684.2	624.6	561.8	590.4
Computer Science	353.8	123.3	100.7	71.4	61.4
Criminal Justice	149.1	176.7	270.6	242.9	276.3
Dental Hygiene	42.7	52.3	52.8	45.5	44.4
Developmental Education	1273.4	1414.4	1335.7	1292.9	1364.9
Diesel Systems Technology	22.1	21.9	19.5	19.1	15.6
Electrical & Instrumentation Tech	42.8	47.0	41.5	31.0	19.2
Electronics/Telecommunications	59.5	68.9	53.5	56.0	62.5
Electronics (Prison)		32.1	24.4	29.6	32.8
Engineering	78.3	101.5	91.5	113.8	103.3
Engineering Design/Drafting Tech	42.9	47.1	48.2	35.6	43.7
Engineer Des/Draft Tech/Arch Tech (Prison)		36.5	37.4	44.8	27.2
English	663.1	760.5	834.1	783.5	755.3
English Second Language	89.1	108.2	65.0	63.2	76.1
Environmental Technology	28.5	28.7	16.1	18.2	12.7
Family & Human Studies	123.2	139.8	156.0	155.1	159.1
Finance and Credit	151.8	154.2	153.2	169.5	186.0
Fine Arts	337.3	383.0	433.3	409.7	466.6
Geosciences	181.3	209.8	203.7	211.9	207.7
Graphic Communication	40.0				
Health & Lifetime Activities	339.3	395.0	439.4	517.3	536.4
History	434.7	466.0	487.6	463.0	454.4
Humanities	512.9	560.7	551.9	560.4	542.6
Languages	288.6	315.2	269.7	277.5	298.8
Manufacturing & Automation Tech	34.1	35.8	9.6		
Marketing	49.9	56.3	100.8	114.4	110.9
Mathematics	1083.3	1234.3	1320.6	1306.2	1350.6
Medical Assistant/Medical Admin Asst	71.9	83.5	117.0	119.3	129.2
Medical Lab Technology	0.3	9.9	12.3	18.1	17.7
Non-Destructive Testing Tech	3.9	5.0	5.8	12.5	9.8
Nursing	208.0	172.4	156.8	195.3	190.5
Occupational Therapy Asst	21.5	19.8	12.7	20.0	29.5
Paralegal Studies	50.2	71.6	90.3	86.2	88.4
Physical Therapist Asst	39.3	41.6	51.8	53.6	47.3
Physics	195.4	234.7	265.7	241.5	234.9
Political Science	121.7	149.2	148.7	143.5	168.9
Pre-Teacher Education	34.4	36.6	38.2	38.3	45.3
Psychology	367.1	436.0	490.1	563.6	557.2
Radiologic Technology	53.7	62.0	55.0	57.4	68.0
Related Instruction	13.4	15.7			
Short-Term Intensive Training *					
Small Equipment/Vehicle Tech	12.5	16.1			
Social Work	27.9	33.0	43.7	53.2	67.2
Sociology	208.6	239.6	254.4	237.6	250.0
Surgical Technology	12.8	16.0	16.0	12.8	15.2
Surveying	17.8	21.7	15.4	13.9	14.0
Veterinary Technician		23.9	6.9		
Visual Art & Design	430.0	460.7	483.8	494.9	469.8
Visual Art & Design (Prison)		9.2	6.7	5.5	4.2
Welding	29.4	33.8	33.9	39.2	39.7
COLLEGE GRAND TOTALS	12227.0	13604.0	14062.0	14213.0	14320.0

NOTE: * STIT FTE's moved to end of semester reporting

SOURCE: Official Third Week Enrollment Summary by Departments, 2000-2001 to 2004-2005

TABLE 4A.

SPRING SEMESTER, 2003-2004

OFFICIAL ENROLLMENT SUMMARY (BUDGET RELATED)

	AVERAGE	HC	%	FTE	%
2003-04 SPRING SEMESTER OFFICIAL #S (BUDGET RELATED IPEDS)		23487		13923.0	
2003-04 SPRING SEMESTER OFFICIAL #S (BUDGET RELATED NON-IPEDS)**		135			
2003-04 SPRING SEMESTER OFFICIAL #S (BUDGET RELATED TOTAL		23568 ***		13923.0	

2003-04 Spring Semester Enrollment Targets & % Complete	23700	99.4%	14029.0	99.2%
2002-03 Spring Semester Official #'s & % Complete	22577	104.4%	13638.0	102.1%

AVERAGE CREDIT HOURS TAKEN

Resident	8.81	22716	96.4%	13344.0	95.8%
Non-Resident	10.19	852	3.6%	579.0	4.2%
Total	8.86	23568		13923.0	

AVERAGE AGE OF STUDENTS *

Resident	25.89
Non-Resident	25.90

MALE TO FEMALE RATIO

Male	12414	52.7%
Female	11154	47.3%
Total	23568	

WHERE STUDENTS COME FROM

Salt Lake County	17817	75.6%
Utah Excluding SL County	4899	20.8%
US Excluding Utah & Foreign Countries	852	3.6%
Total	23568	

LEVELS OF STUDENTS

First Time Freshmen	2122	9.0%
Other Freshmen	6955	29.5%
Sophomores	14491	61.5%
Total	23568	

* Age is not a completely accurate figure in that some students choose not to release this information

** Budget Related Non-IPEDS = Budget Related Non-Credit Student

*** Budget Related Total Headcount will not match Budget Related IPEDS & Non-IPEDS subtotal:
A student is only counted once in the Budget Related Total. A student in both Budget Related types counted in both

TABLE 4.

ENROLLMENT BY ACADEMIC DEPARTMENT - SPRING SEMESTER FTE'S

DEPARTMENT	00-01	01-02	02-03	03-04
Accounting	242.2	258.3	263.0	267.1
Apprenticeship/Carpentry-Millwright	38.3	27.0	5.7	5.3
Apprenticeship/Culinary Arts	53.5	32.9	31.7	55.2
Apprenticeship/Culinary Arts (Prison)		15.6	17.1	10.7
Apprenticeship/Electricity-Instrumentation	149.3	156.0	96.9	92.4
Apprenticeship/General	15.7	12.1	27.2	27.5
Apprenticeship/HVAC	15.5	11.5	11.6	9.6
Apprenticeship/Ironworkers	4.0	8.0	4.0	4.0
Apprenticeship/Machinist	3.7	2.3	4.3	2.7
Apprenticeship/Plumbers-Pipefitters	172.3	166.5	134.6	119.5
Apprenticeship/Sheet Metal	27.0	19.3	18.4	
Apprenticeship/Stage Hands	9.0	5.7	2.0	4.7
Architectural Tech	129.1	87.0	93.4	86.2
ASL/Interpreting	46.5	36.8	32.1	34.8
Automotive Collision Repair & Painting	20.9	14.4	14.1	28.3
Automotive Technician	89.2	54.6	79.8	84.6
Automotive Technician (Prison)		52.8	41.6	47.6
Aviation Maintenance Tech	85.3	98.8	109.3	83.2
Aviation Technology/Professional Pilot	49.4	49.0	46.9	41.0
Barbering/Cosmetology	200.6	248.8	285.4	324.8
Biology	556.8	669.6	926.0	984.4
Biotechnology		5.3	13.1	19.5
Bldg Construction/Construction Mgt	145.8	49.0	49.3	57.9
Bldg Construction (Prison)		85.3	82.9	73.9
Business Communication	37.5	20.8	17.6	
Business Economics	166.8	224.2	235.2	247.4
Business Info Technology	152.1	111.6		
Business Management	282.9	286.6	304.0	370.3
Business Math	58.8	66.4	71.8	
Chemistry	228.0	289.6	328.0	371.6
Communication	413.0	448.7	558.9	586.2
Computer Info Systems	443.7	611.4	596.4	586.5
Computer Science	331.1	120.0	77.4	62.6
Criminal Justice	152.3	191.5	253.4	246.0
Dental Hygiene	41.4	49.5	51.4	46.3
Developmental Education	1155.7	1154.0	1198.2	1191.5
Diesel Systems Technology	16.1	20.1	18.6	15.6
Electrical & Instrumentation Tech	35.8	39.7	41.0	26.3
Electronics/Telecommunications	56.4	51.0	62.9	67.7
Electronics (Prison)		13.6	26.4	30.9
Engineering	94.7	97.4	105.5	133.1
Engineering Design/Drafting Tech	43.4	43.4	54.9	46.9
Engineer Des/Draft Tech/Arch Tech (Prison)		49.8	51.6	30.6
English	763.9	789.7	857.7	814.9
English Second Language	81.8	64.3	45.3	50.3
Environmental Technology	24.3	25.7	22.0	30.6
Family & Human Studies	113.0	135.8	152.4	151.1
Finance and Credit	146.1	174.6	177.2	194.8
Fine Arts	342.3	358.9	407.8	436.5
Geosciences	192.5	194.8	201.2	196.5
Graphic Communication	46.5			
Health & Lifetime Activities	376.2	387.5	489.4	553.7
History	358.5	414.5	435.0	453.8
Humanities	476.1	530.4	544.9	553.5
Languages	240.9	251.1	276.4	255.8
Manufacturing & Automation Tech	34.0	34.1	3.4	
Marketing	53.1	47.3	80.3	97.0
Mathematics	1067.7	1151.3	1261.5	1255.7
Medical Assistant/Medical Admin Asst	66.0	82.0	95.8	113.1
Medical Lab Technology	0.5	9.5	11.5	10.6
Non-Destructive Testing Tech	1.9	50.1	4.6	16.9
Nursing	200.8	168.6	179.0	213.1
Occupational Therapy Asst	21.0	21.1	17.6	22.5
Paralegal Studies	48.1	69.5	81.1	89.7
Physical Science				
Physical Therapist Asst	29.6	28.0	34.0	33.9
Physics	208.3	216.9	254.6	235.9
Political Science	117.7	105.6	138.4	161.5
Pre-Teacher Education	35.1	39.8	40.4	50.5
Psychology	363.7	385.3	465.4	517.1
Radiologic Technology	48.2	51.3	48.7	52.8
Related Instruction	17.9	13.3		
Short-Term Intensive Training *				
Small Equipment/Vehicle Tech	12.3	15.7		
Social Work	29.5	38.7	45.3	60.1
Sociology	186.7	221.5	235.5	236.0
Surgical Technology	18.4	12.8	15.2	11.2
Surveying	23.0	24.8	18.8	
Veterinary Technician		14.6	7.5	
Visual Art & Design	418.1	474.4	491.8	476.2
Visual Art & Design (Prison)		5.5	15.7	11.1
Welding	31.5	37.1	39.0	42.2
COLLEGE GRAND TOTALS	11959.0	12702.0	13638.0	13923.0

NOTE: * STIT FTE's moved to end of semester reportin

SOURCE: Official Third Week Enrollment Summary by Departments, 2000-2001 to 2004-20C

TABLE 5.

2003-2004 ENROLLMENT BY ACADEMIC DEPARTMENT - ANNUALIZED FTE'S

DEPARTMENT	SUMMER END OF TERM 2003-2004	FALL COMPOSITE 2003-2004	SPRING COMPOSITE 2003-2004	ANNUALIZED FTE'S (AFTE'S) 2003-2004
Accounting	79.0	261.5	267.1	303.8
Apprenticeship/Carpentry-Millwright		6.8	5.6	6.2
Apprenticeship/Culinary Arts	7.2	46.6	59.0	56.4
Apprenticeship/Culinary Arts (Prison)	8.4	10.0	10.7	14.6
Apprenticeship/Electricity-Instrumentation	8.3	95.5	92.4	98.1
Apprenticeship/General	9.5	54.4	52.6	58.3
Apprenticeship/HVAC	1.0	12.6	9.9	11.8
Apprenticeship/Ironworkers	4.0	8.0	4.0	8.0
Apprenticeship/Machinist		3.0	2.9	3.0
Apprenticeship/Plumbers-Pipefitters	12.7	120.4	125.6	129.3
Apprenticeship/Sheet Metal		0.3		0.2
Apprenticeship/Stage Hands		3.7	4.7	4.2
Apprenticeship/Telecommunications	6.6			3.3
Architectural Tech	14.2	99.7	86.2	100.0
ASL/Interpreting	5.6	48.3	34.1	44.0
Automotive Collision Repair & Painting		30.7	28.3	29.5
Automotive Technician	1.8	75.4	86.2	81.6
Automotive Technician (Prison)	11.8	44.0	50.8	53.3
Aviation Maintenance Tech	42.7	100.6	83.7	113.4
Aviation Technology/Professional Pilot	11.2	46.2	41.0	49.2
Barbering/Cosmetology	233.6	309.3	324.8	433.8
Biology	323.0	1032.1	990.1	1172.6
Biotechnology		18.1	19.5	18.8
Bldg Construction/Construction Mgt	18.3	63.7	57.9	70.0
Bldg Construction (Prison)	33.3	84.2	80.6	99.0
Business Economics	121.9	282.6	248.0	326.2
Business Management	132.9	362.8	370.3	432.9
Chemistry	207.9	407.2	371.7	493.4
Communication	222.1	637.6	589.3	724.5
Computer Info Systems	174.6	565.3	590.5	665.1
Computer Science	19.0	71.5	62.6	76.6
Criminal Justice	98.1	245.0	246.0	294.5
Dental Hygiene		45.5	46.3	45.9
Developmental Education	419.7	1298.5	1200.1	1459.2
Diesel Systems Technology		19.1	16.0	17.6
Electrical & Instrumentation Tech	12.4	31.0	26.3	34.9
Electronics/Telecommunications	20.1	56.0	67.7	71.9
Electronics (Prison)	32.9	29.6	30.9	46.7
Engineering	31.1	113.8	133.1	139.1
Engineering Design/Drafting Tech	14.1	49.5	47.5	55.6
Engineering Des/DraftTech/Arch Tech (Prison)	21.9	44.8	30.9	48.8
English	338.1	783.9	814.9	968.4
English Second Language	20.6	63.2	50.3	67.1
Environmental Technology	8.2	21.2	31.8	30.6
Family & Human Studies	21.1	156.1	152.2	164.7
Finance and Credit	58.3	169.5	194.8	211.3
Fine Arts	108.3	418.0	437.7	482.0
Geosciences	82.0	211.9	196.6	245.3
Health & Lifetime Activities	228.9	518.0	576.6	661.7
History	96.8	467.2	457.2	510.6
Humanities	135.3	560.4	556.1	625.9
Languages	67.3	277.5	256.0	300.4
Marketing	16.3	114.4	97.0	113.9
Mathematics	583.0	1309.5	1256.1	1574.3
Medical Assistant/Medical Admin Asst	64.8	126.1	118.0	154.5
Medical Lab Technology	8.0	18.1	10.6	18.4
Non-Destructive Testing Tech		12.5	16.9	14.7
Nursing	20.2	196.7	213.1	214.9
Occupational Therapy Asst	0.9	23.5	22.5	23.5
Paralegal Studies	30.4	86.2	89.7	103.2
Physical Therapist Asst	18.8	53.6	34.4	53.4
Physics	80.0	241.5	236.1	278.8
Political Science	35.8	143.5	161.6	170.5
Pre-Teacher Education	5.2	38.3	30.7	37.1
Psychology	131.6	563.6	520.1	607.6
Radiologic Technology	12.7	57.5	52.9	61.6
Short-Term Intensive Training		9.0	38.0	23.5
Social Work	6.6	53.2	62.1	61.0
Sociology	91.4	237.6	235.4	282.1
Surgical Technology		12.8	11.2	12.0
Visual Art & Design	131.0	494.9	477.2	551.5
Visual Art & Design (Prison)	3.5	5.5	11.1	10.1
Welding		39.2	42.2	40.6
COLLEGE GRAND TOTALS	4766.0	14319.0	14056.0	16570.5

SOURCE: Official Enrollment Summary by Departments, Summer End of Term, Fall & Spring Composite, 2003-2004

TABLE 6.

ENROLLMENT BY ACADEMIC DEPARTMENT - ANNUALIZED FTE'S

DEPARTMENT	1999-2000	2000-2001	2001-2002	2002-2003	2003-2004
Accounting	265.4	264.8	280.3	297.1	303.8
Air-Conditioning, Refrigeration & Heating	1.0				
Apprenticeship/Boilermakers	17.0	8.0		3.2	
Apprenticeship/Carpentry-Millwright	58.7	36.8	27.1	19.5	6.2
Apprenticeship/Culinary Arts	39.6	53.3	39.0	38.1	56.4
Apprenticeship/Culinary Arts (Prison)			22.1	14.2	14.6
Apprenticeship/Electricity-Instrumentation	230.9	173.1	176.9	129.6	98.1
Apprenticeship/General	18.1	17.0	22.6	30.3	58.3
Apprenticeship/HVAC	17.7	18.9	12.2	13.1	11.8
Apprenticeship/Ironworkers	9.8	12.0	23.7	19.5	8.0
Apprenticeship/Machinist	4.0	4.0	6.5	3.8	3.0
Apprenticeship/Plumbers-Pipefitters	208.7	183.0	184.2	140.2	129.3
Apprenticeship/Sheet Metal	21.6	30.0	21.1	19.7	0.2
Apprenticeship/Stage Hands	16.4	11.2	10.2	6.0	4.2
Apprenticeship/Telecommunications				13.2	3.3
Architectural Tech	115.4	144.1	102.5	111.2	100.0
ASL/Interpreting	33.4	54.6	46.3	45.8	44.0
Automotive Collision Repair & Painting	17.4	22.6	20.6	22.2	29.5
Automotive Technician	88.3	108.3	58.1	80.9	81.6
Automotive Technician (Prison)			55.3	49.1	53.3
Aviation Maintenance Tech	54.7	91.2	119.9	114.8	113.4
Aviation Technology/Professional Pilot	53.2	60.0	61.3	65.4	49.2
Barbering/Cosmetology	292.0	283.2	305.4	387.9	433.8
Biology	600.8	658.0	785.7	1062.8	1172.6
Biotechnology			4.6	13.8	18.8
Bldg Construction/Construction Mgt	166.5	183.7	54.4	61.2	70.0
Bldg Construction (Prison)			115.2	104.7	99.0
Business Communication	42.5	47.0	31.8	20.0	
Business Economics	175.2	207.9	271.6	302.8	326.2
Business Info Technology	184.3	166.9	145.0	7.2	
Business Management	303.7	327.0	340.1	364.0	432.9
Business Math	77.6	72.2	79.0	85.8	
Chemistry	267.3	278.7	341.4	412.3	493.4
Communication	439.7	493.9	532.3	684.6	724.5
Computer Info Systems	403.1	474.2	732.4	687.4	665.1
Computer Science	316.6	395.2	149.1	107.6	76.6
Criminal Justice	179.0	181.8	238.2	288.7	294.5
Dental Hygiene	37.7	42.0	50.9	52.1	45.9
Developmental Education	1258.7	1378.2	1488.1	1472.5	1459.2
Diesel Systems Technology	25.9	18.9	20.3	23.4	17.6
Electrical & Instrumentation Tech	47.9	46.2	51.8	51.3	34.9
Electronics/Telecommunications	53.8	79.7	68.5	77.4	71.9
Electronics (Prison)			23.8	39.3	46.7
Engineering	78.0	93.9	112.9	109.5	139.1
Engineering Design/Drafting Tech	51.1	51.2	53.2	58.9	55.6
Engineer Des/Draft Tech/Arch Tech (Prison)			54.3	58.0	48.8
English	784.0	832.6	927.6	1008.5	968.4
English Second Language	102.0	98.4	114.4	71.8	67.1
Environmental Technology	38.4	31.2	34.8	23.6	30.6
Family & Human Studies	123.3	129.2	156.4	172.2	164.7
Finance and Credit	165.8	166.4	182.4	189.9	211.3
Fine Arts	350.7	386.5	422.8	458.9	482.0
Geosciences	198.5	215.1	238.4	238.2	245.3
Graphic Communication	44.4	50.9			
Health & Lifetime Activities	349.0	401.0	452.9	524.8	661.7
History	445.0	439.0	488.7	496.4	510.6
Humanities	519.8	545.6	607.3	634.9	625.9
Languages	291.3	300.6	318.2	304.8	300.4
Manufacturing & Automation Tech	29.8	36.6	36.5	8.9	
Marketing	59.5	56.0	57.8	98.8	113.9
Mathematics	1151.1	1253.7	1420.1	1559.3	1574.3
Medical Assistant/Medical Admin Asst	81.6	84.9	104.0	134.9	154.5
Medical Lab Technology	3.0	0.9	10.6	15.6	18.4
Non-Destructive Testing Tech	3.9	2.9	27.1	22.0	14.7
Nursing	219.0	217.4	181.6	175.3	214.9
Occupational Therapy Asst	30.2	21.4	21.2	18.8	23.5
Paralegal Studies	48.5	59.0	81.8	101.0	103.2
Physical Science					
Physical Therapist Asst	40.7	40.4	42.9	47.8	53.4
Physics	219.1	247.8	265.2	300.3	278.8
Political Science	124.4	133.3	139.8	159.3	170.5
Pre-Teacher Education	35.6	36.0	46.3	48.6	37.1
Psychology	400.6	413.6	456.2	538.6	607.6
Radiologic Technology	42.6	54.5	62.5	56.7	61.6
Related Instruction	15.3	15.7	14.5		
Short-Term Intensive Training	141.0	149.0	131.0	44.0	23.5
Small Equipment/Vehicle Tech	19.0	12.4	16.1		
Social Work	31.6	31.4	38.7	51.6	61.0
Sociology	227.7	227.3	266.5	283.1	282.1
Surgical Technology	16.5	15.4	17.2	15.6	12.0
Surveying	12.6	20.4	23.3	17.2	
Veterinary Technician			22.6	7.8	
Visual Art & Design	461.0	474.4	539.5	569.3	551.5
Visual Art & Design (Prison)			8.8	17.3	10.1
Welding	31.8	30.4	35.4	37.1	40.6
COLLEGE GRAND TOTALS	13131.0	14004.0	15351.0	16223.0	16570.5

NOTE: * These numbers include non-credit producing FTE's, excluding any non-budget related FTE's.

SOURCE: Official Enrollment Summary by Departments, 1999-2000 to 2003-2004

GRAPH 7.

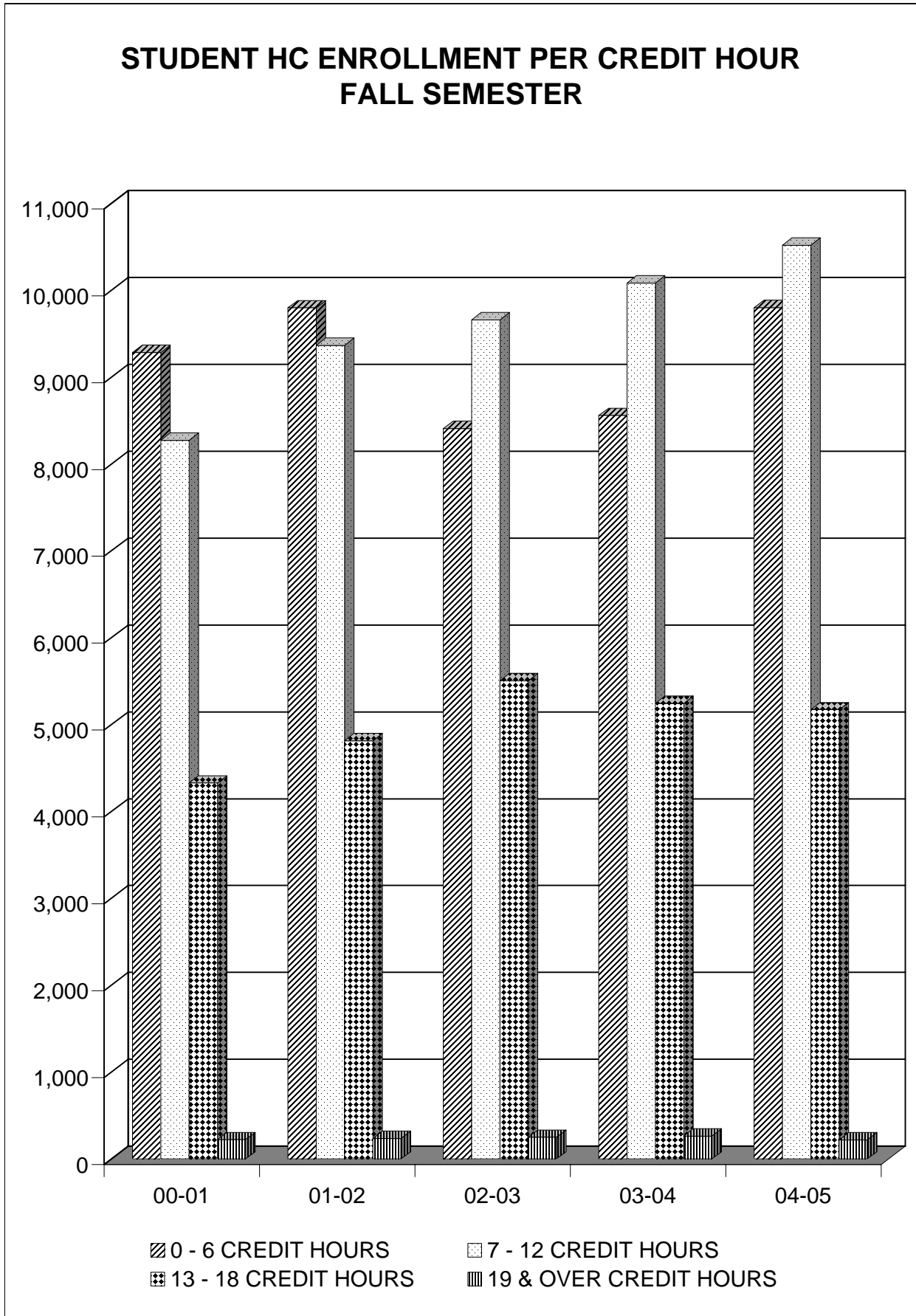


TABLE 7.
STUDENT HEADCOUNT ENROLLMENT PER CREDIT HOUR
FALL HEADCOUNT

Credit Hours	2000-2001		2001-2002		2002-2003		2003-2004		2004-2005	
	HC	% of Total	HC	% of Total	HC	% of Total	HC	% of Total	HC	% of Total
0 - 3	3769	17.05%	3898	16.10%	3237	13.59%	3164	13.10%	4273	16.62%
4 - 6	5516	24.95%	5901	24.37%	5173	21.71%	5395	22.34%	5527	21.50%
7 - 9	4100	18.54%	4520	18.67%	4665	19.58%	4880	20.21%	5090	19.80%
10 - 12	4174	18.88%	4845	20.01%	4994	20.96%	5203	21.54%	5429	21.12%
13 - 15	3167	14.32%	3572	14.75%	4109	17.25%	3914	16.21%	4039	15.71%
16 - 18	1160	5.25%	1243	5.13%	1395	5.86%	1331	5.51%	1132	4.40%
19 - 21	185	0.84%	191	0.79%	225	0.94%	209	0.87%	184	0.72%
Over 21	38	0.17%	45	0.19%	27	0.11%	56	0.22%	37	0.13%
Total	22109		####		23825		24152		25711	

NOTE: Totals = Institution Grand Totals
SOURCE: Utah Board of Regents' Official Reports, Fall Semester,
2000-2001 to 2004-2005

TABLE 8.

SALT LAKE COMMUNITY COLLEGE

AVERAGE CREDIT HOURS TAKEN

SUMMER QTR/TERM	RESIDENTS	NON-RESIDENTS	TOTAL
1990-91	7.93	10.38	7.99
1991-92	8.17	10.14	8.26
1992-93	8.62	11.62	8.71
1993-94	8.61	12.47	8.79
1994-95	8.51	12.28	8.70
1995-96	8.23	12.85	8.45
1996-97	7.99	12.03	8.19
1997-98	7.92	11.81	8.15
1998-99 *	8.15	12.49	8.39
1999-00 *	5.16	7.43	5.29
2000-01 *	5.69	7.37	5.78
2001-02 *	5.92	7.75	6.04
2002-03 *	6.26	7.33	6.32
2003-04 *	6.44	7.42	6.49
2004-05 *	6.47	7.56	6.53
FALL QTR/SEMESTER			
1990-91	8.67	7.26	8.63
1991-92	9.28	12.37	9.34
1992-93	9.58	12.07	9.63
1993-94	9.62	12.58	9.69
1994-95	9.68	12.68	9.76
1995-96	9.53	12.16	9.61
1996-97	9.47	11.55	9.54
1997-98	9.61	12.06	9.70
1998-99 **	8.38	10.64	8.45
1999-00 **	8.52	11.03	8.60
2000-01 **	8.54	10.89	8.61
2001-02 **	8.02	10.71	8.72
2002-03 **	9.10	9.29	9.11
2003-04 **	8.91	10.41	8.97
2004-05 **	8.75	7.47	8.68
SPRING SEMESTER			
1998-99 **	8.42	10.78	8.51
1999-00 **	8.20	10.94	8.28
2000-01 **	8.65	10.33	8.10
2001-02 **	8.71	9.85	8.75
2002-03 **	9.03	10.04	9.06
2003-04 **	8.81	10.19	8.86
WINTER QTR			
1990-91	8.89	9.83	8.91
1991-92	9.45	11.77	9.50
1992-93	9.53	12.02	9.58
1993-94	9.64	12.51	9.71
1994-95	9.50	12.37	9.58
1995-96	9.45	12.27	9.52
1996-97	9.37	11.71	9.44
1997-98	9.65	11.96	9.73
SPRING QTR			
1990-91	9.26	10.62	9.29
1991-92	9.32	12.11	9.38
1992-93	9.51	13.03	9.58
1993-94	9.56	12.42	9.63
1994-95	9.51	12.35	9.59
1995-96	9.45	12.66	9.55
1996-97	9.31	12.45	9.40
1997-98	9.53	12.69	9.63

NOTE: * Summer Term
 ** Semester Conversion

SOURCE: Utah Board of Regents' Official Reports, 1990-91 to 2004-200

TABLE 9.
STUDENT ENROLLMENT BY MAJORS
Fall Headcount (Credit Students)

DEPARTMENT	00-01 *	01-02 *	02-03 *	03-04 *	04-05 *
Accounting	351	370	315	327	324
Air-Conditioning, Refrigeration & Heating	12	10	4	3	46
Apprenticeship (all)	1303	1093	474 **	449 **	571 **
Architectural Technology	327	326	294	308	294
ASL/Interpreting	183	176	157	139	117
Automotive Collision Repair & Painting	19	24	13	25	20
Automotive Technician	139	188	171	170	161
Aviation Maintenance Tech	101	189	142	133	80
Aviation Technology/Professional Pilot	136	153	131	114	111
Barbering/Cosmetology	362	381	479	471	450
Biology	297	262	258	241	250
Biotechnology		1	12	32	59
Building Construction/Construction Mgt (all)	135	203	204	191	229
Business Information Technology (all)	104	89	49	24	
Business Mgt/Prod/Logistics Mgt	525	512	486	415	381
Chemistry			22	71	122
Communication	327	309	292	278	267
Computer Info Systems (all)	509	512	417	351	310
Computer Science	828	800	656	524	446
Continuing Ed Programs	185	192	194	199	239
Criminal Justice	418	452	547	473	549
Culinary Arts	50	104	84	101	99
Dental Hygiene	45	41	49	41	31
Diesel Systems Technology	29	31	36	30	35
Economics			25	30	48
Electrical & Instrumentation Tech					13
Electricity ***	92	232	309	278	
Electronics/Telecommunications	127	213	178	146	152
Engineering (all)	500	537	496	517	518
Engineering Design/Drafting Tech	131	129	101	93	99
English					163
English Second Language	13	39			
Environmental Technology	59	62	68	41	26
Family & Human Studies	144	143	172	90	81
Finance and Credit	93	88	11	72	75
Fitness Technician				42	61
General Business	1526	1707	1664	1523	1434
General Studies	7667	8748	9325	10088	10409
Geography	10	9	13	15	7
Geosciences					10
History	4	43	73	85	91
Humanities	221	197	125	86	80
International Studies	126	145	108	94	99
Maintenance Mechanics	7	4			
Manufacturing & Automation Tech	38	36	40	22	9
Marketing Mgt	93	91	97	80	77
Medical Administrative Asst/ Medical Asst	75	86	105	135	141
Medical Lab Technology	2	26	36	55	62
Music	22	68	100	92	95
Non-Destructive Testing Tech	12	10	8	14	19
Nursing/Associate Degree	1971	2206	2398	3078	3573
Occupational Therapy Asst	16	14	14	17	6
Para Education					23
Paralegal Studies	130	173	187	178	181
Physical Science (see Chemistry)	101	126	112	68	
Physical Therapist Asst	27	21	22	54	53
Physics					27
Political Science	6	39	45	48	71
Practical Nursing	113	68	11	1	
Pre-Teacher Education	609	571	501	554	537
Psychology	51	244	321	328	340
Radiologic Technology	52	39	59	37	58
Small Equipment/Vehicle Tech	20				
Social Science	343	201	124	85	55
Social Work	61	167	162	185	199
Sociology	2	40	72	54	78
Surgical Technology	3	9	10	21	20
Surveying	56	68	40	31	32
Unknown	21	14	141	44	33
Veterinary Technician		15	9	2	
Visual Art & Design (all)	649	624	559	538	452
Welding	18	31	20	25	27
COLLEGE GRAND TOTALS	21596	23701	23347	24056	24725

NOTE: * Due to the reporting procedures, the report equals "IPEDS Total" or credit students, not the "Budget Related or the Institution Total".

** Registrations were not complete at 3rd week.

*** Students were combined with Apprenticeship/Electricity-Instrumentation.

Studies have found this report to be about 80% accurate.

SOURCE: Utah Board of Regents' Official Reports, Fall Semester, 2000-2001 to 2004-2005

TABLE 10.
STUDENT ENROLLMENT BY MAJORS AND BY GENDER
Fall Headcount (Credit Students)

Department	2000-01 *		2001-02 *		2002-03 *		2003-04 *		2004-05 *	
	Male	Female	Male	Female	Male	Female	Male	Female	Male	Female
Accounting	89	262	131	239	109	206	130	197	128	196
Air-Conditioning, Refrigeration & Heating	11	1	10	0	4	0	3	0	46	0
Apprenticeship (all)	1256	47	1020	73	458	16 **	434	15 **	563	8 **
Architectural Technology	260	67	266	60	246	48	253	55	238	56
ASL/Interpreting	15	168	12	164	10	147	10	129	8	109
Automotive Collision Repair & Painting	17	2	22	2	12	1	23	2	19	1
Automotive Technician	131	8	178	10	163	8	165	5	154	7
Aviation Maintenance Tech	99	2	176	13	138	4	124	9	77	3
Aviation Technology/Professional Pilot	125	11	141	12	123	8	107	7	99	12
Barbering/Cosmetology	12	350	6	375	9	470	17	454	18	432
Biology	146	151	127	135	136	122	124	117	129	121
Biotechnology			0	1	7	5	14	18	29	30
Building Construction/Construction Mgt (all)	133	2	194	9	193	11	185	6	216	13
Business Information Technology (all)	19	85	21	68	14	35	8	16		
Business Mgt/Prod/Logistics Mgt	343	182	334	178	327	159	260	155	230	151
Chemistry					13	9	42	29	75	47
Communication	166	161	153	156	143	149	146	132	142	125
Computer Info Systems (all)	342	167	377	135	328	89	277	74	248	62
Computer Science	664	164	663	137	554	102	441	83	390	56
Continuing Ed Programs	53	132	53	139	50	144	53	146	90	149
Criminal Justice	253	165	262	190	324	223	283	190	315	234
Culinary Arts	25	25	38	66	43	41	50	51	56	43
Dental Hygiene	0	45	1	40	4	45	1	40	0	31
Diesel Systems Technology	29	0	31	0	35	1	29	1	35	0
Economics					18	7	20	10	39	9
Electrical & Instrumentation Tech									13	0
Electricity ***	84	8	225	7	304	5	274	4		
Electronics/Telecommunications	117	10	193	20	166	12	136	10	141	11
Engineering (all)	455	45	489	48	413	83	482	35	474	44
Engineering Design/Drafting Tech	97	34	105	24	82	19	81	12	86	13
English									56	107
English Second Language	2	11	19	20						
Environmental Technology	37	22	40	22	53	15	30	11	14	12
Family & Human Studies	12	132	8	135	13	159	5	85	5	76
Finance and Credit	56	37	39	49	6	5	36	36	37	38
Fitness Technician							21	21	24	37
General Business	973	553	1104	603	1103	561	1033	490	974	460
General Studies	3816	3851	4447	4301	4858	4467	5280	4808	5600	4809
Geography	4	6	6	3	7	6	7	8	6	1
Geosciences									7	3
History	4	0	28	15	45	28	52	33	56	35
Humanities	88	133	60	137	44	81	32	54	31	49
International Studies	68	58	81	64	57	51	41	53	47	52
Maintenance Mechanics	6	1	4	0						
Manufacturing & Automation Tech	35	3	34	2	38	2	21	1	9	0
Marketing Mgt	48	45	53	38	56	41	45	35	49	28
Medical Administrative Asst/Medical Asst	3	72	6	80	14	91	11	124	11	130
Medical Lab Technology	0	2	11	15	15	21	22	33	21	41
Music	12	10	37	31	41	59	47	45	50	45
Non-Destructive Testing Tech	10	2	8	2	7	1	14	0	18	1
Nursing/Associate Degree	366	1605	418	1788	467	1931	650	2428	801	2772
Occupational Therapy Asst	3	13	2	12	3	11	5	12	1	5
Para Education									4	19
Paralegal Studies	21	109	27	146	30	157	37	141	33	148
Physical Science (see Chemistry)	63	38	78	48	77	35	49	19		
Physical Therapist Asst	7	20	1	20	3	19	7	47	9	44
Physics									23	4
Political Science	5	1	26	13	29	16	27	21	49	22
Practical Nursing	15	98	10	58	2	9	0	1		
Pre-Teacher Education	90	519	91	480	99	402	103	451	102	435
Psychology	18	33	85	159	114	207	104	224	115	225
Radiologic Technology	11	41	4	35	11	48	4	33	12	46
Small Equipment/Vehicle Tech	19	1								
Social Science	111	232	63	138	41	83	33	52	21	34
Social Work	10	51	33	134	20	142	40	145	38	161
Sociology	1	1	16	24	29	43	19	35	37	41
Surgical Technology	1	2	4	5	1	9	6	15	5	15
Surveying	51	5	66	2	37	3	29	2	29	3
Unknown	12	9	7	7	77	64	17	27	9	24
Veterinary Technician			2	13	0	9	0	2		
Visual Art & Design (all)	315	334	322	302	288	271	270	268	228	224
Welding	17	1	30	1	20	0	22	3	27	0
COLLEGE GRAND TOTALS	11251	10345	12498	11203	12131	11216	12291	11765	12616	12109

NOTE: * Due to the reporting procedures, the report equals "IPEDS Total" or credit students, not the "Budget Related or the Institution total".

** Registrations were not complete at 3rd week.

*** Students were combined with Apprenticeship/Electricity-Instrumentation.

Studies have found this report to be about 80% accurate.

SOURCE: Utah Board of Regents' Official Reports, Fall Semester, 2000-2001 to 2004-2005

GRAPH 11.

**WHERE STUDENTS LIVE BY ZIP CODE
(FALL 2004-2005 HEADCOUNT)
ZIP CODES WITH 50 OR MORE STUDENTS**

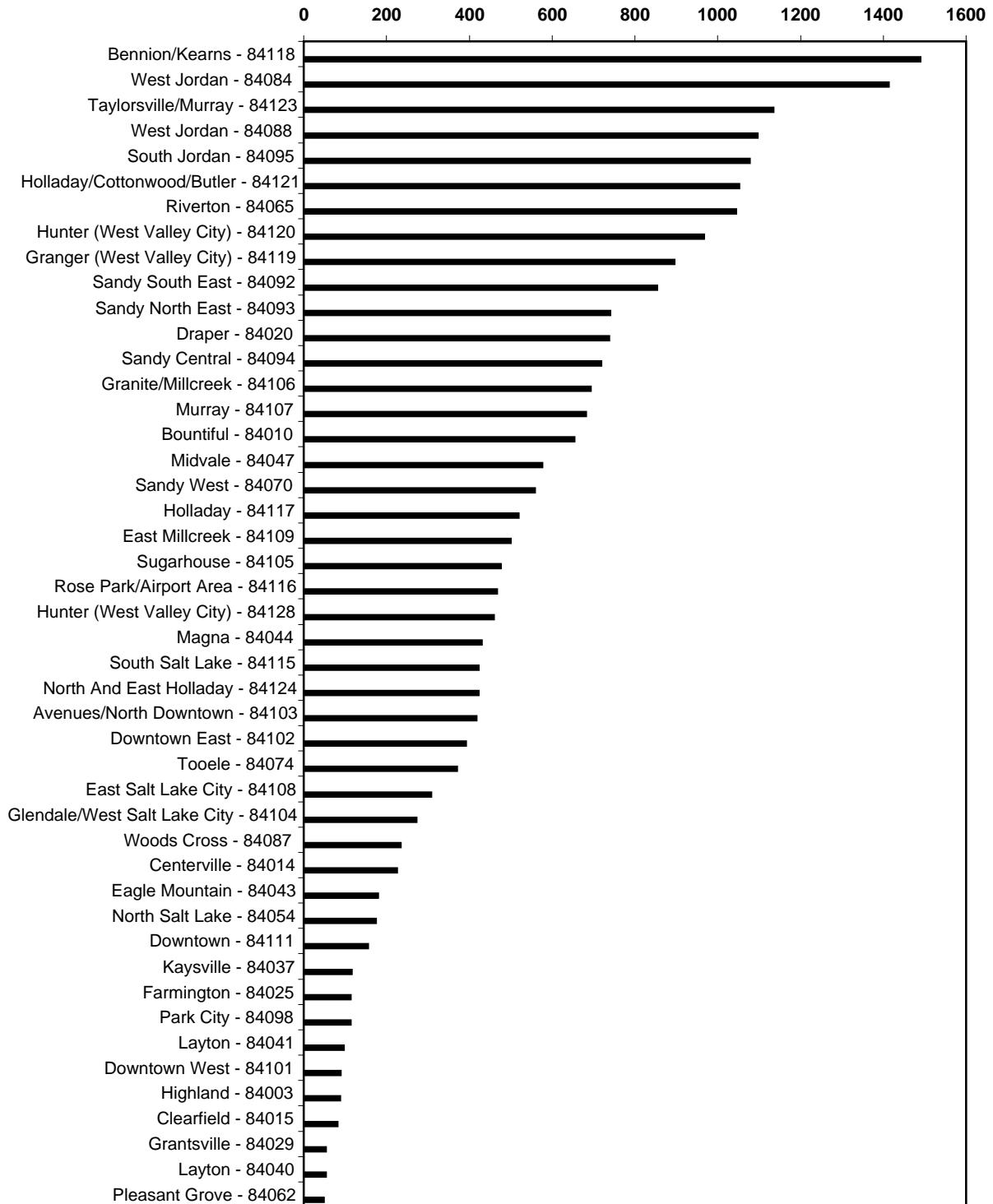


TABLE 11.

WHERE STUDENTS LIVE BY ZIP CODE

Zip Codes with 50 or more students
2004-2005 Fall Headcount

ZIP CODE	LOCATION	NUMBER OF STUDENTS	PERCENT OF
84118	Bennion/Kearns	1,490	5.80%
84084	West Jordan	1,414	5.50%
84123	Taylorsville/Murray	1,136	4.42%
84088	West Jordan	1,097	4.27%
84095	South Jordan	1,079	4.20%
84121	Holladay/Cottonwood/Butle	1,053	4.10%
84065	Riverton	1,046	4.07%
84120	Hunter (West Valley City)	968	3.76%
84119	Granger (West Valley City)	897	3.49%
84092	Sandy South East	855	3.33%
84093	Sandy North East	741	2.88%
84020	Draper	739	2.87%
84094	Sandy Central	720	2.80%
84106	Granite/Millcreek	695	2.70%
84107	Murray	683	2.66%
84010	Bountiful	655	2.55%
84047	Midvale	577	2.24%
84070	Sandy West	560	2.18%
84117	Holladay	520	2.02%
84109	East Millcreek	501	1.95%
84105	Sugarhouse	477	1.86%
84116	Rose Park/Airport Area	468	1.82%
84128	Hunter (West Valley City)	461	1.79%
84044	Magna	431	1.68%
84115	South Salt Lake	424	1.65%
84124	North and East Holladay	423	1.65%
84103	Avenues/North Downtown	419	1.63%
84102	Downtown East	393	1.53%
84074	Tooele	371	1.44%
84108	East Salt Lake City	309	1.20%
84104	Glendale/West Salt Lake City	273	1.06%
84087	Woods Cross	235	0.91%
84014	Centerville	227	0.88%
84043	Eagle Mountain	181	0.70%
84054	North Salt Lake	176	0.68%
84111	Downtown	157	0.61%
84037	Kaysville	117	0.46%
84025	Farmington	114	0.44%
84098	Park City	114	0.44%
84041	Layton	98	0.38%
84101	Downtown West	90	0.35%
84003	Highland	89	0.35%
84015	Clearfield	83	0.32%
84029	Grantsville	55	0.21%
84040	Layton	55	0.21%
84062	Pleasant Grove	50	0.19%
Total of this list		23,716	92.24%
Total in other zip codes & Unknown		1,995	7.76%
College Total, Fall Semester, 2004-2005		25,711	100.00%

NOTE: The report equals "Institution Total"

SOURCE: Utah Board of Regents' Official Report, Fall Semester, 2004-2005

TABLE 12.
STUDENT DISTRIBUTION BY AGE AND GENDER

Fall Headcount

Number of Students						
A G E	GENDER	00-01 *	01-02 *	02-03 *	03-04 *	04-05 *
Under 18	Males	116	123	73	132	203
	Females	302	350	276	448	501
	Total	418 **	473 **	349 **	580 **	704 **
18 - 19	Males	1759	1862	1529	1929	1925
	Females	2673	2702	2080	2536	2451
	Total	4432	4564	3609	4465	4376
20 - 21	Males	2113	2212	1924	2195	2178
	Females	2232	2337	2621	2398	2338
	Total	4345	4549	4545	4593	4516
22 - 24	Males	3307	3735	3914	3634	3526
	Females	1722	2019	2213	2077	2239
	Total	5029	5754	6127	5711	5765
25 - 29	Males	1871	2266	2608	2394	2672
	Females	1232	1390	1633	1741	1883
	Total	3103	3656	4241	4135	4555
30 - 34	Males	768	892	903	884	927
	Females	610	721	755	830	933
	Total	1378	1613	1658	1714	1860
35 - 39	Males	438	483	438	405	423
	Females	511	550	515	576	568
	Total	949	1033	953	981	991
Over 39	Males	813	880	689	718	693
	Females	1034	1111	1066	1159	1170
	Total	1847	1991	1755	1877	1863
Unknown	Males	66	45	53	0	69
	Females	29	23	57	0	26
	Total	95	68	110	0	95
Total	Males	11251	12498	12131	12291	12616
	Females	10345	11203	11216	11765	12109
Total Students		21596	23701	23347	24056	24725

NOTE: * Due to the reporting procedures, the report equals "IPEDS Total"

** High School Concurrent Enrollment students not included in report due to a different third week capture date with the Semester Conversion

SOURCE: Utah Board of Regents' Official Reports, Fall Semester, 2000-2001 to 2004-2005

TABLE 13.
STUDENT DISTRIBUTION BY RACIAL BACKGROUND AND GENDER
Fall Headcount

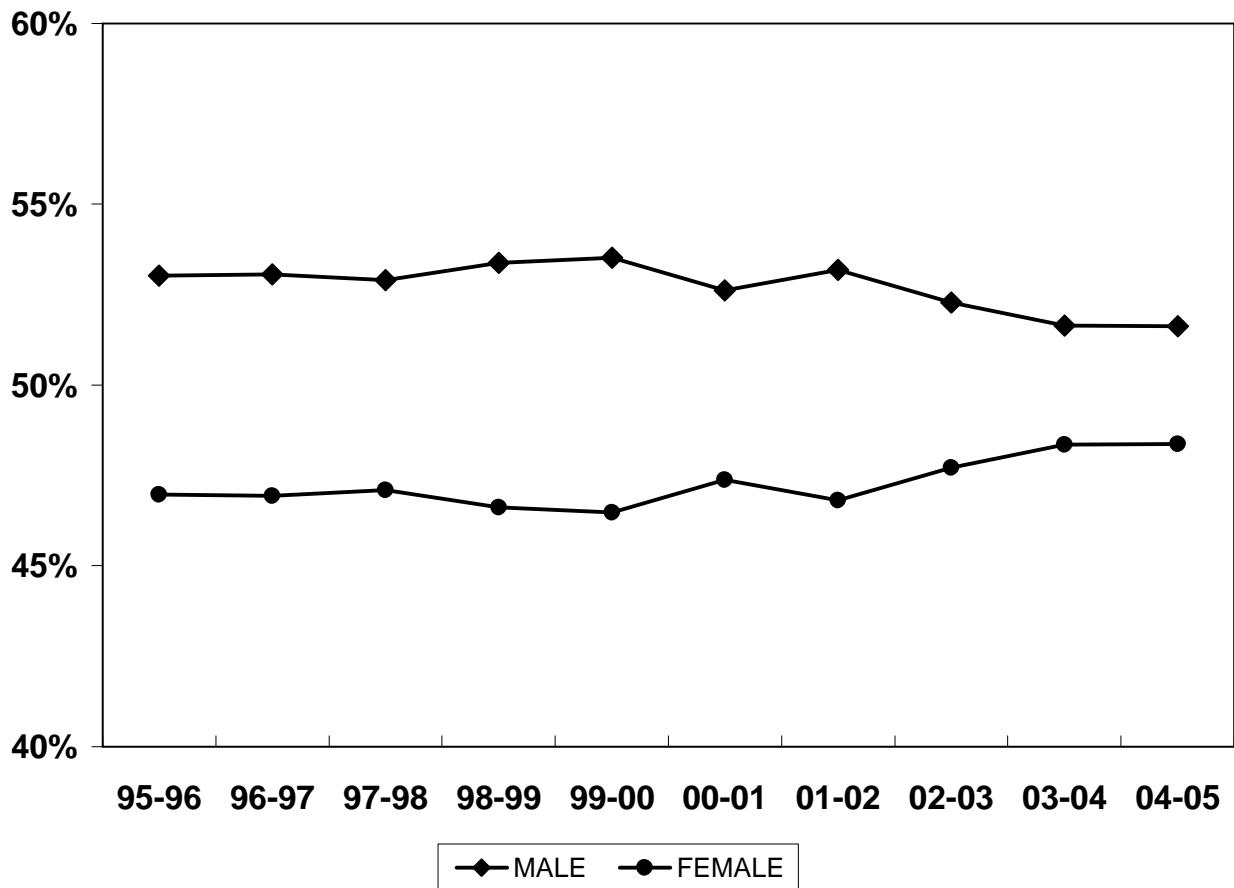
Number of students						
Race	Gender	00-01 *	01-02 *	02-03 *	03-04 *	04-05 *
Non-Resident/ Alien	Males	186	185	148	135	119
	Females	159	165	136	104	105
	Total	345	350	284	239	224
% of Total		1.60%	1.48%	1.22%	0.99%	0.91%
Black Non- Hispanic	Males	118	168	112	171	176
	Females	61	88	91	125	143
	Total	179	256	203	296	319
% of Total		0.83%	1.08%	0.87%	1.23%	1.29%
Amer. Indian/ Alaskan Nat	Males	109	110	123	136	146
	Females	108	121	113	125	175
	Total	217	231	236	261	321
% of Total		1.00%	0.97%	1.01%	1.08%	1.30%
Asian/Pac. Islander	Males	407	478	522	452	491
	Females	375	386	352	456	512
	Total	782	864	874	908	1003
% of Total		3.62%	3.65%	3.74%	3.77%	4.06%
Hispanic	Males	602	803	643	732	790
	Females	578	674	692	785	883
	Total	1180	1477	1335	1517	1673
% of Total		5.46%	6.23%	5.72%	6.31%	6.77%
White Non- Hispanic	Males	9108	9870	9457	9819	10075
	Females	8438	9062	8753	9339	9535
	Total	17546	18932	18210	19158	19610
% of Total		81.25%	79.88%	78.00%	79.64%	79.31%
Race/Ethnicity Unknown	Males	721	884	1126	846	819
	Females	626	707	1079	831	756
	Total	1347	1591	1079	1677	1575
% of Total		6.24%	6.71%	4.62%	6.97%	6.36%
College Totals	Males	11251	12498	12131	12291	12616
	Females	10345	11203	11216	11765	12109
	Total	21596	23701	23347	24056	24725

NOTE: * Due to the reporting procedures, the report equals "IPEDS Total" or "Total Credit Students", not the "Budget Related" or the "Institution Total".

SOURCE: Utah Board of Regents' Official Reports, 2000-2001 to 2004-2005

GRAPH/TABLE 14.

**MALE TO FEMALE RATIOS
FALL QUARTER/SEMESTER**



**MALE TO FEMALE RATIOS
FALL QUARTER/SEMESTER**

	Semester Conversion									
	95-96	96-97	97-98	98-99	99-00	00-01	01-02	02-03	03-04	04-05
MALE	10017	10391	10416	9849	11015	11206	12451	12105	12280	12771
FEMALE	8871	9191	9275	8604	9568	10088	10963	11049	11497	11969
TOTAL	18888	19582	19691	18453	20583	21294	23414	23154	23777	24740
MALE	53.03%	53.06%	52.90%	53.37%	53.52%	52.63%	53.18%	52.28%	51.65%	51.62%
FEMALE	46.97%	46.94%	47.10%	46.63%	46.48%	47.37%	46.82%	47.72%	48.35%	48.38%

NOTE: Totals equal "Total of All Budget Related", not the "IPEDS" or the "Institution Total".

SOURCE: Utah Board of Regents' Official Reports, 1995-1996 to 2004-2005

TABLE/GRAPH 15.

**VETERANS CURRENTLY ELIGIBLE TO RECEIVE BENEFITS
BY ACADEMIC CLASSIFICATION
FALL HEADCOUNT**

Academic Classification	95-96	96-97	97-98	98-99 *	99-00 *	00-01 *	01-02 *	02-03 *	03-04 *	04-05 *
Vocational or Technical	477	424	422	413	434	398	295	265	240	212
Non-Vocational or Non-Technical	311	293	277	224	201	227	426	260	232	174
TOTAL	788	717	699	637	635	625	721	525	472	386
All Other Students	20048	21677	23608	19117	20638	21484	23494	23300	23680	25325
GRAND TOTAL	20836	22394	24307	19754	21273	22109	24215	23825	24152	25711
Percent Veterans	3.8%	3.2%	2.9%	3.2%	3.0%	2.8%	3.0%	2.2%	2.0%	1.5%

NOTE: Totals = "Institution Total

* Semester Conversion

SOURCE: Utah Board of Regents' Official Reports, Fall Quarter/Semester, 1995-1996 to 2004-2005

**VETERANS CURRENTLY ELIGIBLE TO RECEIVE BENEFITS
FALL HEADCOUNT
BY PERCENT**

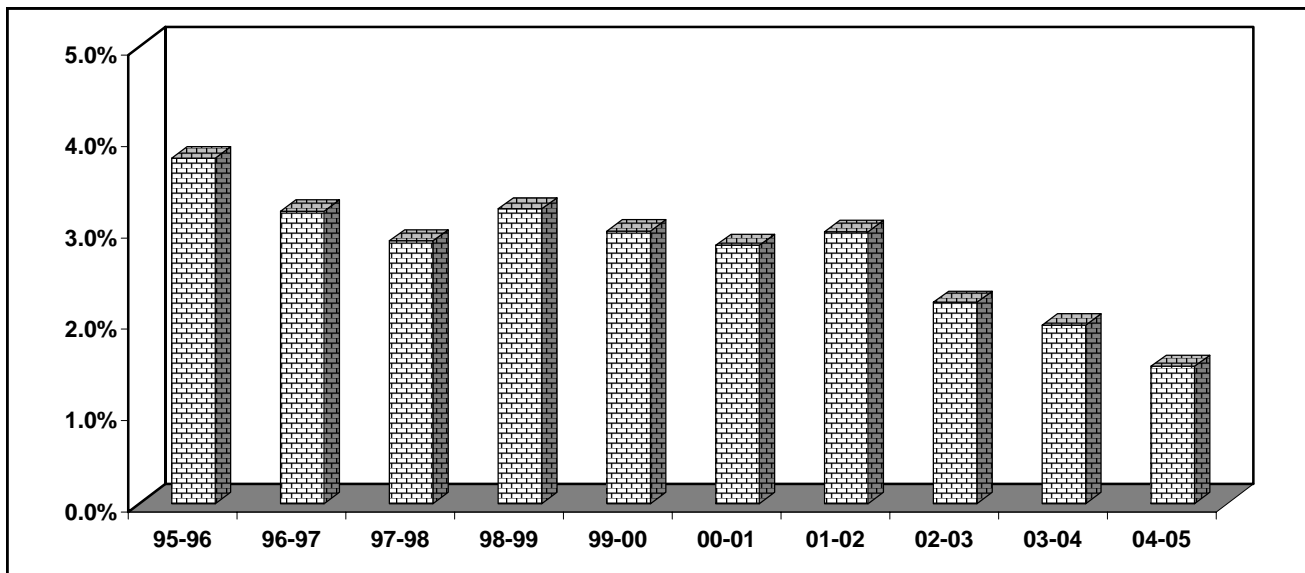


TABLE 16.

SALT LAKE COMMUNITY COLLEGE AVERAGE AGE OF STUDENTS

	RESIDENTS			NON-RESIDENTS		
	MALE	FEMALE	TOTAL	MALE	FEMALE	TOTAL
SUMMER QTR/TERM						
1991-92	29.80	29.77	29.79	29.92	29.77	29.78
1992-93	28.93	29.75	29.37	28.87	29.70	29.48
1993-94	28.98	29.64	29.34	28.95	29.59	29.33
1994-95	28.44	28.64	28.56	28.50	28.72	28.54
1995-96	28.48	28.77	28.65	28.48	28.56	28.62
1996-97	28.25	28.10	28.17	28.34	28.03	28.19
1997-98	27.60	27.54	27.57	27.59	27.54	27.58
1998-99 Term	27.71	27.08	27.39	27.74	27.12	27.41
1999-00 Term	26.96	26.21	26.59	27.03	26.29	26.63
2000-01 Term	26.93	26.35	26.64	26.98	26.43	26.68
2001-02 Term	27.70	26.87	27.31	27.58	26.86	27.29
2002-03 Term	27.08	26.85	26.97	27.06	26.77	26.99
2003-04 Term	26.94	27.06	27.03	26.85	27.12	27.05
2004-05 Term	26.79	27.03	26.92	26.82	27.04	26.89
FALL QTR/SEMESTER						
1991-92	27.29	28.16	27.93	27.36	28.37	27.84
1992-93	26.75	27.52	27.13	26.85	27.41	27.30
1993-94	26.65	26.99	26.83	26.61	26.84	26.79
1994-95	26.35	26.50	26.42	26.37	26.44	26.39
1995-96	26.20	26.63	26.56	26.23	26.61	26.54
1996-97	25.57	25.38	25.49	25.61	25.32	25.53
1997-98	24.91	24.29	24.61	24.88	24.32	24.64
1998-99 Sem	27.48	26.48	27.01	27.45	26.43	27.04
1999-00 Sem	26.07	25.59	25.85	26.06	25.63	25.90
2000-01 Sem	25.48	25.39	25.44	25.55	25.34	25.49
2001-02 Sem	25.56	25.42	25.54	25.48	25.68	25.60
2002-03 Sem	25.76	25.86	25.81	25.72	25.85	25.79
2003-04 Sem	25.18	25.66	25.45	25.15	25.65	25.48
2004-05 Sem	25.63	26.14	25.93	25.67	26.11	25.91
SPRING SEMESTER						
1998-99	25.88	25.67	25.78	25.84	25.65	25.81
1999-00	N/A	N/A	N/A	N/A	N/A	N/A
2000-01	25.85	25.78	25.81	25.65	25.90	25.85
2001-02	25.64	25.72	25.68	25.54	25.83	25.75
2002-03	24.80	24.92	24.85	24.76	24.92	24.81
2003-04	25.69	26.09	25.89	25.61	26.10	25.90
WINTER QTR						
1991-92	28.60	28.92	28.77	28.59	29.28	28.73
1992-93	27.84	28.60	28.20	27.83	28.81	28.26
1993-94	27.70	28.18	27.93	27.72	28.20	27.85
1994-95	27.80	27.78	27.79	27.82	27.58	27.79
1995-96	27.41	27.05	27.24	27.43	27.01	27.20
1996-97	26.91	26.50	26.72	26.90	26.37	26.70
1997-98	26.57	26.29	26.45	26.57	26.26	26.44
SPRING QTR						
1991-92	28.13	28.85	28.49	28.10	29.16	28.51
1992-93	27.30	28.28	27.80	27.22	28.42	27.86
1993-94	27.18	27.61	27.39	27.24	27.43	27.40
1994-95	27.24	27.32	27.28	27.34	27.21	27.32
1995-96	26.32	26.55	26.44	26.29	26.52	26.40
1996-97	25.80	25.82	25.81	25.78	25.87	25.84
1997-98	25.44	25.38	25.40	25.50	25.32	25.44

NOTE: Age is not a completely accurate figure, in that some students choose not to release this information.

SOURCE: Utah Board of Regents' Official Reports, 1991-1992 to 2004-200

TABLE 17.
2003-2004 STUDENT TO FACULTY RATIOS (ANNUALIZED)

D E P A R T M E N T	2003-04
Accounting	23.80
Apprenticeship (all)	13.92
Apprenticeship/Culinary Arts (Prison)	7.78
Architectural Technology	16.68
ASL/Interpreting	8.63
Automotive Collision Repair & Paintin	11.62
Automotive Technician	9.98
Automotive Technician (Prison)	13.23
Aviation Maintenance Tech	13.65
Aviation Technology/Professional Pilc	9.96
Barbering/Cosmetology	11.17
Biology	30.88
Biotechnology	21.01
Bldg Construction/Construction Mg	10.00
Bldg Construction (Prison)	9.28
Business Economics	30.15
Business Managemen	23.40
Chemistry	31.05
Communication	26.34
Computer Info Systems	26.11
Computer Science	10.18
Criminal Justice	22.24
Dental Hygiene	4.69
Developmental Education	21.99
Diesel Systems Technology	6.42
Electrical & Instrumentation Tech	5.77
Electronics/Telecommunication	6.14
Electronics (Prison)	9.48
Engineering	9.62
Engineering Design/Drafting Tech	8.47
Engineer Des/Draft Tech/Arch Tech (Prison)	12.12
English	22.49
English Second Language	20.95
Environmental Technology	10.81
Family & Human Studies	22.26
Finance and Credit	24.63
Fine Arts	23.27
Geosciences	23.75
Health & Lifetime Activities	21.22
History	35.13
Humanities	30.38
Languages	22.68
Marketing	13.66
Mathematics	30.02
Medical Assistant/Medical Admin Ass	20.85
Medical Lab Technology	N/A
Non-Destructive Testing Tech	12.45
Nursing	11.08
Occupational Therapy Ass	10.42
Paralegal Studies	18.19
Physical Therapist Ass	12.98
Physics	28.32
Political Science	26.27
Pre-Teacher Education	24.83
Psychology	36.27
Radiologic Technology	16.50
Short-Term Intensive Training	N/A
Social Work	22.53
Sociology	28.77
Surgical Technology	6.37
Visual Art & Design	14.28
Visual Art & Design (Prison)	6.20
Welding	10.46
COLLEGE STUDENT TO FACULTY RATIO	20.81

NOTE: A formula is used to determine the FTE equivalent for hourly faculty

GRAPH 18.

SALT LAKE COMMUNITY COLLEGE STUDENT TO FACULTY/STAFF RATIOS

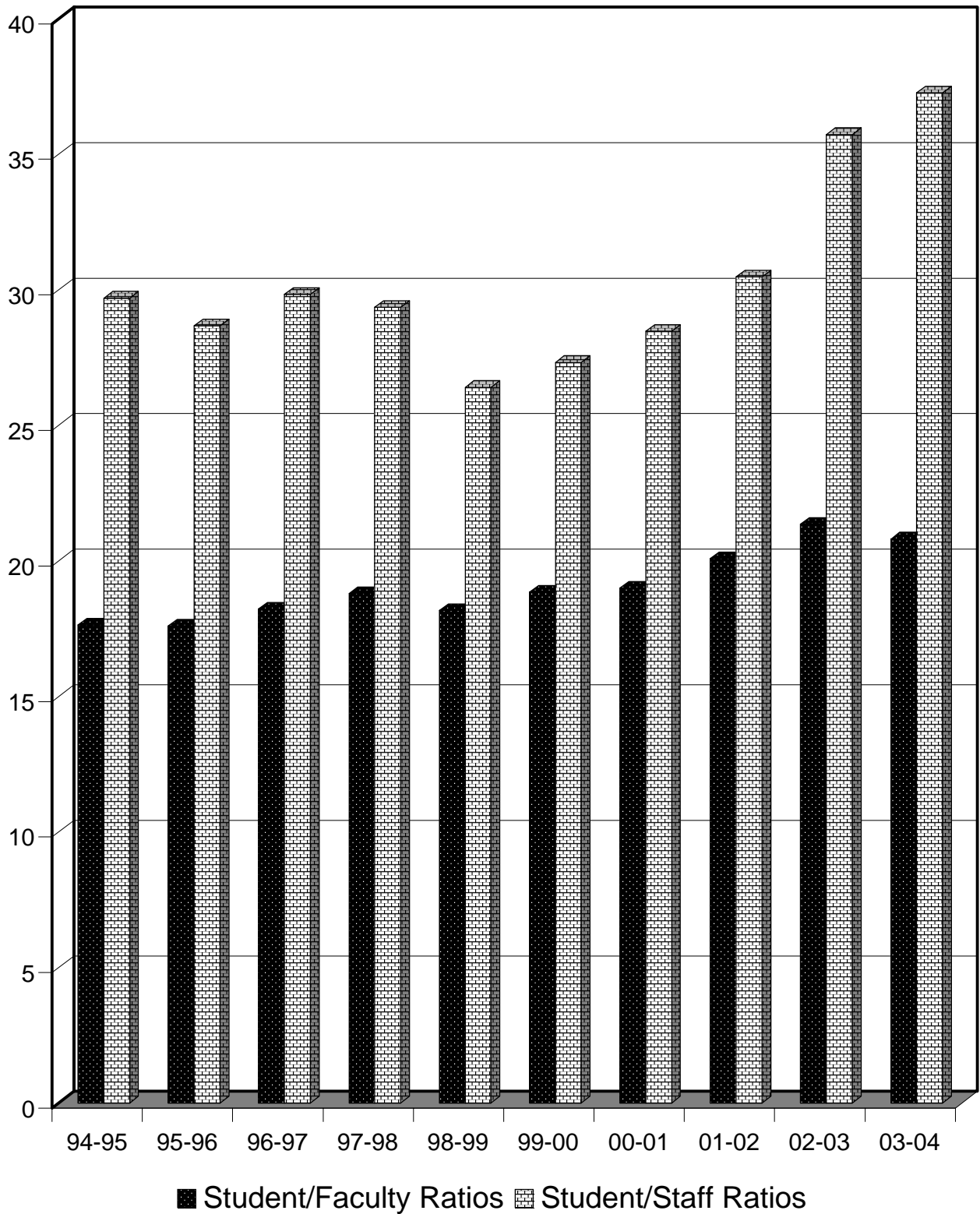


TABLE 18.**STUDENT/FACULTY AND STUDENT/STAFF RATIOS****SALT LAKE COMMUNITY COLLEGE****Education and General - Academic Year and Summer
Counting Hourly Faculty**

Year	Student/ Faculty Ratio	Student/ Staff Ratio
1984-85	23.68	33.61
1985-86	23.22	31.29
1986-87	23.56	30.04
1987-88	24.11	34.02
1988-89	23.92	32.33
1989-90	25.10	34.82
1990-91	19.54	34.03
1991-92	19.99	33.54
1992-93	20.10	32.57
1993-94	20.30	30.65
1994-95	17.63	29.70
1995-96	17.60	28.68
1996-97	18.22	29.83
1997-98	18.79	29.35
1998-99	18.17	26.40
1999-00	18.85	27.32
2000-01	19.00	28.47
2001-02	20.08	30.48
2002-03	21.35	35.73
2003-04	20.81	37.27

FTE STUDENTS, FACULTY AND STAFF

Year	Students	Faculty	Staff
1984-85	5,563	234.9	165.5
1985-86	5,720	246.3	182.8
1986-87	5,845	248.1	194.6
1987-88	6,073	251.9	178.5
1988-89	6,530	273.0	202.0
1989-90	7,584	302.1	217.8
1990-91	8,596	440.0	252.6
1991-92	10,243	512.4	305.4
1992-93	10,775	536.0	330.8
1993-94	11,449	564.1	373.5
1994-95	11,846	671.9	398.8
1995-96	12,431	706.3	433.4
1996-97	13,002	713.5	435.9
1997-98	13,216	703.5	450.3
1998-99	12,220	672.6	462.9
1999-00	13,131	696.6	480.7
2000-01	14,004	737.2	491.9
2001-02	15,351	764.5	503.6
2002-03	16,223	760.0	454.1
2003-04	16,571	796.3	444.6

SOURCE: Legislative Analyst Information/Actual Reported Data

TABLE 19.

**SALARIED PERSONNEL: BUDGETED FTE
BY INDEX CODES, BY GENDER, AND BY FACULTY/STAFF
ED & GENERAL INDEXES (10000 Fund)
(FILLED POSITIONS AS OF 10/15/04)**

	Full-time Faculty			Salaried Admin/Staff			All Full-time		
	Male	Female	Total	Male	Female	Total	Male	Female	Total
<u>Academic Vice President</u>									
Academic Vice President				2.00	3.00	5.00	2.00	3.00	5.00
Accreditation/Assessment	1.00	1.00	2.00				1.00	1.00	2.00
Scheduling				1.00	2.00	3.00	1.00	2.00	3.00
<u>Learning Resources (Library)</u>									
Library/Redwood				6.00	9.00	15.00	6.00	9.00	15.00
Library/South				1.00	1.00	2.00	1.00	1.00	2.00
Instructional Media Center				3.00	1.00	4.00	3.00	1.00	4.00
<u>Associate VP Academic Services</u>									
Associate VP Office					2.00	2.00		2.00	2.00
Community Writing Center		1.00	1.00					1.00	1.00
Director Instr/Development					1.00	1.00		1.00	1.00
University Center					1.00	1.00		1.00	1.00
<u>School of Business and School of Developmental Ed</u>									
Dean's Office				1.00	2.00	3.00	1.00	2.00	3.00
Division of Business				1.00	1.00	2.00	1.00	1.00	2.00
Business Program Support					1.00	1.00		1.00	1.00
Accounting	4.00	3.00	7.00	1.00		1.00	5.00	3.00	8.00
Finance & Economics	6.65		6.65				6.65		6.65
Computer Information Systems	7.00	4.00	11.00	1.00		1.00	8.00	4.00	12.00
Business Management	6.00	2.60	8.60				6.00	2.60	8.60
Marketing/Paralegal	4.00	3.40	7.40				4.00	3.40	7.40
Division of Developmental Ed				1.00	1.00	2.00	1.00	1.00	2.00
Developmental Education	6.00	19.00	25.00	3.00	0.10	3.10	9.00	19.10	28.10
ESL	2.00		2.00				2.00		2.00
<u>School of Cont & Comm Ed., Arts and Communication</u>									
Dean's Office				2.00		2.00	2.00		2.00
CE Site Management					1.00	1.00		1.00	1.00
Sandy Operations					4.00	4.00		4.00	4.00
Conferencing Operations				0.50		0.50	0.50		0.50
Div of Arts, Comm & Dig Media					2.00	2.00		2.00	2.00
Fine Arts	4.00	2.00	6.00				4.00	2.00	6.00
Visual Art & Design	7.00	4.00	11.00				7.00	4.00	11.00
Communication	6.26	3.00	9.26	1.00		1.00	7.26	3.00	10.26
Media Support Services				3.00		3.00	3.00		3.00
DMT (EBT) Instruction		1.00	1.00					1.00	1.00
Director Continuing Education				1.63		1.63	1.63		1.63
Special Projects MC	0.33		0.33				0.33		0.33
Criminal Justice	3.00		3.00				3.00		3.00
Director Public Safety				1.00	0.47	1.47	1.00	0.47	1.47
Entrepreneurship				1.00		1.00	1.00		1.00
Distance Education				3.20	5.00	8.20	3.20	5.00	8.20
Adult Training Education					0.50	0.50		0.50	0.50
Director ATE Operations					1.00	1.00		1.00	1.00
STIT					0.50	0.50		0.50	0.50
Small Business Regional					1.00	1.00		1.00	1.00

	Full-time Faculty			Salaried Admin/Staff			All Full-time		
	Male	Female	Total	Male	Female	Total	Male	Female	Total
<u>School of Humanities & Soc Sci</u>									
Dean's Office				1.00	1.00	2.00	1.00	1.00	2.00
Div of Social Behavior Sciences				1.00	1.00	2.00	1.00	1.00	2.00
Psychology	5.00	3.00	8.00				5.00	3.00	8.00
Sociology	1.00	3.00	4.00				1.00	3.00	4.00
Social Work		1.00	1.00					1.00	1.00
Political Science	2.00	1.00	3.00				2.00	1.00	3.00
Family & Human Studies	1.00	1.00	2.00		2.12	2.12	1.00	3.12	4.12
Pre-Teacher Education		1.00	1.00					1.00	1.00
Division of Humanities				1.00	1.00	2.00	1.00	1.00	2.00
History	3.00	2.00	5.00				3.00	2.00	5.00
Humanities	7.00	1.00	8.00				7.00	1.00	8.00
Languages	2.00	2.00	4.00	1.00		1.00	3.00	2.00	5.00
Interpreting for the Deaf	2.00	2.00	4.00	1.00		1.00	3.00	2.00	5.00
English	6.00	14.00	20.00	1.94		1.94	7.94	14.00	21.94
<u>School of Sci, Math & Engineering</u>									
Dean's Office				1.00	1.00	2.00	1.00	1.00	2.00
Division of Natural Sciences				1.00	1.00	2.00	1.00	1.00	2.00
Biology	4.00	6.00	10.00	1.00	1.00	2.00	5.00	7.00	12.00
Biology Lab					1.00	1.00		1.00	1.00
Chemistry	2.00		2.00		1.88	1.88	2.00	1.88	3.88
Physics	1.00	2.00	3.00				1.00	2.00	3.00
Environmental Technology	1.00	1.00	2.00				1.00	1.00	2.00
Geoscience	1.00	1.00	2.00				1.00	1.00	2.00
Health & Lifetime Activities	3.00	5.00	8.00				3.00	5.00	8.00
Div of Eng, Cmptr Sci & Rela Tech					2.00	2.00		2.00	2.00
Computer Science	4.00	1.00	5.00				4.00	1.00	5.00
Engineering	6.00	2.00	8.00	1.00		1.00	7.00	2.00	9.00
Engineering Design/Draft Tech	2.00	1.00	3.00				2.00	1.00	3.00
Architectural Technology	3.00		3.00				3.00		3.00
Telecommunication	3.34		3.34				3.34		3.34
Electronics		1.00	1.00	1.00		1.00	1.00	1.00	2.00
Mathematics	7.65	8.00	15.65	2.00		2.00	9.65	8.00	17.65
<u>Associate VP of Applied Technology</u>									
<u>(School of Applied Tech & School of Health Sciences)</u>									
Associate VP Office				1.00	5.00	6.00	1.00	5.00	6.00
Aviation Technology/Prof Pilot	2.00	1.00	3.00				2.00	1.00	3.00
Div of Technical Specialties				1.00	1.00	2.00	1.00	1.00	2.00
Bldg Contr/Construction Mgmt	2.00		2.00	1.00		1.00	3.00		3.00
Automotive/Auto Collision Repair	6.00		6.00				6.00		6.00
Diesel Systems Technology	2.00		2.00				2.00		2.00
Barbering/Cosmetology	2.00	5.00	7.00		1.00	1.00	2.00	6.00	8.00
Division of Aviation & Related Tech.				1.00	1.00	2.00	1.00	1.00	2.00
Aviation	5.00		5.00				5.00		5.00
Non-Destructive Test Technology	1.00		1.00				1.00		1.00
Incarcerated Student Program				1.00	1.00	2.00	1.00	1.00	2.00
Automotive Tech/Prison	2.00		2.00				2.00		2.00
Carpentry/Prison	5.00		5.00				5.00		5.00
Electro-Mech Div/Prison	2.00		2.00				2.00		2.00
Eng/Draft/Design/Prison	2.00		2.00				2.00		2.00

	Full-time Faculty			Salaried Admin/Staff			All Full-time		
	Male	Female	Total	Male	Female	Total	Male	Female	Total
<u>Associate VP of Applied Technology</u>									
<u>(School of Applied Tech & School of Health Sciences) - Continued</u>									
Director Apprenticeship				1.00	1.00	2.00	1.00	1.00	2.00
Culinary Arts	1.00	1.00	2.00				1.00	1.00	2.00
Apprenticeship/General	2.00		2.00				2.00		2.00
Apprenticeship/Telecomm	0.33		0.33				0.33		0.33
Electricity	3.00		3.00	1.00		1.00	4.00		4.00
ATE Director					0.50	0.50		0.50	0.50
Division of Allied Health				1.00	1.00	2.00	1.00	1.00	2.00
Occupational Therapy Assistant		2.00	2.00					2.00	2.00
Physical Therapy Assistant	1.00	1.00	2.00				1.00	1.00	2.00
Surgical Technology	1.00		1.00				1.00		1.00
Radiologic Technology	1.00	2.00	3.00				1.00	2.00	3.00
Medical Assistant		3.00	3.00					3.00	3.00
Dental Hygiene	1.00	3.00	4.00		0.75	0.75	1.00	3.75	4.75
Biotechnology		1.00	1.00		1.00	1.00		2.00	2.00
Division of Nursing					2.00	2.00		2.00	2.00
Nursing	1.00	15.00	16.00		0.75	0.75	1.00	15.75	16.75
<u>Student Services Vice President</u>									
Vice President's Office					2.25	2.25		2.25	2.25
Academic Advising				6.00	8.00	14.00	6.00	8.00	14.00
Academic Advising/Formal				2.00	1.71	3.71	2.00	1.71	3.71
Assessment				1.00	5.00	6.00	1.00	5.00	6.00
Athletics/Intercollegiate				0.41	0.50	0.91	0.41	0.50	0.91
Athletics/Other					0.50	0.50		0.50	0.50
Community Service					1.00	1.00		1.00	1.00
Cooperative Education				2.00	3.75	5.75	2.00	3.75	5.75
Data Center					4.00	4.00		4.00	4.00
Dean/Student Enrollment Services				1.00	2.00	3.00	1.00	2.00	3.00
Dean/Student Planning & Sup					1.00	1.00		1.00	1.00
Dean/Students					2.00	2.00		2.00	2.00
Disability Resource Center				3.00	7.48	10.48	3.00	7.48	10.48
Enrollment Services					3.00	3.00		3.00	3.00
Financial Aid				4.00	15.00	19.00	4.00	15.00	19.00
Health & Wellness					2.00	2.00		2.00	2.00
International Students					1.00	1.00		1.00	1.00
Multi-Cultural					1.00	1.00		1.00	1.00
Orientation				1.00	1.00	2.00	1.00	1.00	2.00
Prospective Students					2.00	2.00		2.00	2.00
Registrar's Office				4.00	7.00	11.00	4.00	7.00	11.00
Student Placement					1.00	1.00		1.00	1.00
Student Services - Offsite					3.00	3.00		3.00	3.00
<u>Business Services Vice President</u>									
Vice President's Office				2.00	1.00	3.00	2.00	1.00	3.00
Accounting Systems/Payroll				1.00	5.00	6.00	1.00	5.00	6.00
Administrative Services					2.00	2.00		2.00	2.00
Budget Office					3.00	3.00		3.00	3.00
Business Office				3.00	8.00	11.00	3.00	8.00	11.00
Cashiering/AR					6.00	6.00		6.00	6.00
Collections					4.00	4.00		4.00	4.00
Distribution				3.00		3.00	3.00		3.00
Diversity					1.00	1.00		1.00	1.00
Human Resources				2.00	9.00	11.00	2.00	9.00	11.00
Information Technology				27.00	12.00	39.00	27.00	12.00	39.00
Internal Auditing				1.00	1.00	2.00	1.00	1.00	2.00
Inventory					1.00	1.00		1.00	1.00
Main Street Center				1.00	1.00	2.00	1.00	1.00	2.00
Postage and Mailing					1.00	1.00		1.00	1.00
Purchasing					5.00	5.00		5.00	5.00
Risk Management				1.00		1.00	1.00		1.00
Security				1.00		1.00	1.00		1.00
Staff Development				1.00	1.00	2.00	1.00	1.00	2.00

	Full-time Faculty			Salaried Admin/Staff			All Full-time		
	Male	Female	Total	Male	Female	Total	Male	Female	Total
<u>President's Office</u>									
President's Office				1.00	2.00	3.00	1.00	2.00	3.00
Faculty Senate					0.75	0.75		0.75	0.75
<u>Vice President - Community</u>									
Vice President's Office				1.00	1.00	2.00	1.00	1.00	2.00
<u>Institutional Effectiveness</u>									
Exec Asst to the President				1.00		1.00	1.00		1.00
Contact Center					4.00	4.00		4.00	4.00
Contracts and Grants					1.94	1.94		1.94	1.94
Development Office				0.95	2.42	3.37	0.95	2.42	3.37
Grand Theatre				2.00	0.13	2.13	2.00	0.13	2.13
Institutional Marketing				3.04	6.00	9.04	3.04	6.00	9.04
Institutional Research				1.00	2.00	3.00	1.00	2.00	3.00
Switchboard/Reception					2.00	2.00		2.00	2.00
<u>Facilities</u>									
Director's Office				2.00	2.00	4.00	2.00	2.00	4.00
Arch/Proj Services				3.00		3.00	3.00		3.00
Cabinetmakers				2.00		2.00	2.00		2.00
Carpenters				7.00	0.33	7.33	7.00	0.33	7.33
Custodial Services				30.00	9.00	39.00	30.00	9.00	39.00
Electricians				3.00	1.33	4.33	3.00	1.33	4.33
Facilities Support				2.00		2.00	2.00		2.00
Furniture/Carpet Services					1.00	1.00		1.00	1.00
Grounds Maintenance				10.00		10.00	10.00		10.00
HVAC Systems				18.00	0.33	18.33	18.00	0.33	18.33
Key Office				0.50	0.50	1.00	0.50	0.50	1.00
Lighting Services				3.50		3.50	3.50		3.50
Moving Services				4.50		4.50	4.50		4.50
Operation & Maintenance/Miller				1.00	1.00	2.00	1.00	1.00	2.00
Painters				3.00		3.00	3.00		3.00
Plumbers				3.00		3.00	3.00		3.00
PM System				1.00	1.00	2.00	1.00	1.00	2.00
Signage				1.50		1.50	1.50		1.50
Space Inv/Energy					0.50	0.50		0.50	0.50
Vehicle Maintenance				1.00		1.00	1.00		1.00

COLLEGE WIDE SUMMARY

	Full-time Faculty			Salaried Admin/Staff			All Full-time		
	Male	Female	Total	Male	Female	Total	Male	Female	Total
Totals	166.56	137.00	303.56	229.67	244.99	474.66	396.23	381.99	778.22

Prepared by: Arlene Asay, Budget Office

TABLE 20.

**SALARIED PERSONNEL: BUDGETED FTE
BY INDEX CODES, BY GENDER, AND BY FACULTY/STAFF
SERVICE ENTERPRISES/AUXILIARY, DESIGNATED, RESTRICTED
AGENCY FUNDS, AND SKILLS CENTER FUNDED INDEXES
(FILLED POSITIONS AS OF 10/15/04)**

	Full-time Faculty			Salaried Admin/Staff			All Full-time		
	Male	Female	Total	Male	Female	Total	Male	Female	Total
<u>Associate VP Academic Services</u>									
Curriculum Development				0.80		0.80	0.80		0.80
Concurrent Enrollment				3.00	5.00	8.00	3.00	5.00	8.00
<u>School of Continuing & Community Ed.</u>									
<u>Arts & Communication</u>									
CE Program Operations				1.00	2.00	3.00	1.00	2.00	3.00
Continuing Ed Marketing				0.35		0.35	0.35		0.35
Custom Fit Administration				1.00		1.00	1.00		1.00
DMT/EBT Courses		1.00	1.00					1.00	1.00
Ford Grant				1.00		1.00	1.00		1.00
Hearst Teacher Exchange					0.75	0.75		0.75	0.75
Human Services Training					1.00	1.00		1.00	1.00
Media Production				2.00		2.00	2.00		2.00
Miller Conferencing				1.50	1.00	2.50	1.50	1.00	2.50
Miller Finance					1.00	1.00		1.00	1.00
Miller Innovation					1.00	1.00		1.00	1.00
Program Innovation				1.37	1.00	2.37	1.37	1.00	2.37
Public Safety					0.53	0.53		0.53	0.53
SBDC Administration				2.00		2.00	2.00		2.00
<u>School of Health Sciences</u>									
B.O.R.N. Nursing		1.00	1.00					1.00	1.00
IHC Nursing		3.00	3.00					3.00	3.00
<u>School of Applied Technology</u>									
Professional Pilot				1.00	1.00	2.00	1.00	1.00	2.00
<u>School of Humanities & Social Science</u>									
Eccles Lab School					0.76	0.76		0.76	0.76
<u>School of Developmental Education</u>									
Learning Center					0.90	0.90		0.90	0.90
<u>Learning Resources</u>									
Satellite/Ednet Services				1.00		1.00	1.00		1.00
<u>Institutional Effectiveness</u>									
Development					0.08	0.08		0.08	0.08
Grand Theatre					1.87	1.87		1.87	1.87
Grants & Contracts				1.05	1.56	2.61	1.05	1.56	2.61
Institutional Marketing				0.81		0.81	0.81		0.81

	Full-time Faculty			Salaried Admin/Staff			All Full-time		
	Male	Female	Total	Male	Female	Total	Male	Female	Total
<u>Business Services Vice President</u>									
Accounting Systems/Payroll				1.00		1.00	1.00		1.00
Auxiliary Custodians				3.00		3.00	3.00		3.00
Cashiering - A/R					9.00	9.00		9.00	9.00
College Store				2.00	9.00	11.00	2.00	9.00	11.00
Copy Center Services				2.00	1.00	3.00	2.00	1.00	3.00
Food Services - Jordan				1.00		1.00	1.00		1.00
Food Services - RR				3.00	2.00	5.00	3.00	2.00	5.00
Food Services - SCC				1.00	1.00	2.00	1.00	1.00	2.00
ID Center				1.00	0.50	1.50	1.00	0.50	1.50
Information Technology/Telephone				2.00	1.00	3.00	2.00	1.00	3.00
LAC Activities				1.00		1.00	1.00		1.00
Parking Services				4.00	2.00	6.00	4.00	2.00	6.00
Student Center/Redwood				3.00	4.50	7.50	3.00	4.50	7.50
Student Center/South				1.81	1.00	2.81	1.81	1.00	2.81
Wasatch Front Consortium					0.50	0.50		0.50	0.50
<u>Student Services Vice President</u>									
Vice President's Office					0.75	0.75		0.75	0.75
Academic & Career Advising					0.29	0.29		0.29	0.29
Athletics	1.52	1.52	3.04	2.59	3.50	6.09	4.11	5.02	9.13
Disability Resources					2.28	2.28		2.28	2.28
Financial Aid				1.00		1.00	1.00		1.00
Health/Wellness				0.50	3.00	3.50	0.50	3.00	3.50
International Students					1.00	1.00		1.00	1.00
Multi-Cultural Affairs					1.00	1.00		1.00	1.00
Recreation Management					0.25	0.25		0.25	0.25
Student Life & Leadership				1.00	4.00	5.00	1.00	4.00	5.00
Student Services - Offsite					2.00	2.00		2.00	2.00
Student Support Services					7.00	7.00		7.00	7.00
Community Service					3.00	3.00		3.00	3.00
Veterans Affairs					1.00	1.00		1.00	1.00
<u>Skills Center Funded</u>									
Grants				4.80	3.75	8.55	4.80	3.75	8.55
State Appropriated	9.00	13.00	22.00	15.20	23.00	38.20	24.20	36.00	60.20

COLLEGE WIDE SUMMARY

	Full-time Faculty			Salaried Admin/Staff			All Full-time		
	Male	Female	Total	Male	Female	Total	Male	Female	Total
Totals	10.52	19.52	30.04	68.78	106.77	175.55	79.30	126.29	205.59

Note for file: S/C Grants (Males) includes 1.00 A. Canaday.

TABLE 21.

SALT LAKE COMMUNITY COLLEGE

FACULTY INFORMATION

	MALE	FEMALE	TOTAL	PERCENT
TENURE				
Tenured	92	73	165	49.11%
Tenure Track	60	61	121	36.01%
Off Tenure	26	24	50	14.88%
Total	178	158	336	
RANKING				
Instructor	74	58	132	39.29%
Assistant Professor	48	37	85	25.30%
Associate Professor	26	46	72	21.43%
Professor	30	17	47	13.98%
Total	178	158	336	
EDUCATIONAL CREDENTIALS				
Less than 2 Years	11	2	13	3.87%
2 Year Degree	20	8	28	8.33%
Bachelor Degree	32	18	50	14.88%
Masters Degree	83	111	194	57.74%
Doctorate Degree	32	19	51	15.18%
Total	178	158	336	
MALE/FEMALE RATIOS				
Male	178		178	52.98%
Female		158	158	47.02%
Total	178	158	336	

NOTE: Skills Centers numbers are included

SOURCE: Kevin Price, Assistant Director, Human Resources

TABLE 22.

DISTRIBUTION OF GRADUATES BY DEGREE AND BY MAJOR

PROGRAM AREA	2 0 0 1 - 0 2						2 0 0 2 - 0 3						2 0 0 3 - 0 4					
	APE	AA	AS	AAS	CERT	DIP	APE	AA	AS	AAS	CERT	DIP	APE	AA	AS	AAS	CERT	DIP
Accounting				23	4				1	11	3					16	3	
Apprenticeship (all)				40						23						43		
Architectural Technology			24	12					18	12					9	4		
ASL/Interpreting		8						8						9				
Automotive Collision Repair & Painting				6							1					1		
Automotive Technician/Ford Motor				13		1				11						8		
Aviation Maintenance Technician				6						10						8		
Aviation Technology/Professional Pilot			18						9						9			
Barbering/Cosmetology				25	38	28				32	35	33				35	38	47
Biology			9						6						6			
Biotechnology Technician																4		
Bldg Construction/Construction Mgt (all)			1	52		9			6	23		11			6	24		6
Business Information Technology (all)				17	5					12	3					9	1	
Business Mgt/Log Mgt/Prod Mgt (all)				11	4					7	1					12	3	
Chemistry			12						11						33			
Communications (all)			12						9						13			
Computer Info Systems (all)			20	14	2				28	19					21	12		
Computer Science			57						50						26			
Criminal Justice			42	3					49	2					74	3		
Culinary Arts				6						6						7		
Dental Hygiene				27						29						25		
Diesel Systems Technology				7		2				8						5		
Economics			1						3						5			
Electricity				18	15					16	12					11	8	
Electronics			3	16					1	8	1					9		
Engineering (all)	32		1				33						43					
Engineering Design/Drafting Tech			2	21	6				2	15	14				7	11	9	
English		1						5	3					4	9			
Environmental Technology			12						7						5			
Family & Human Studies			4						3	2					4	2		
Finance and Credit				6	2					5	1					4	3	
Fitness Technician										3						1		
General Business		43	227					68	224					59	221			
General Studies			1267						1200						1260			
Geosciences			2						2						3			
Health Science			50						53						50			
History		3						6						15				
Human Resource Technology				1						3						3		
Humanities		10						7						2				
International Studies (all)		8						15						9				
Manufacturing & Automation Tech			5	1	6				7		1					1		
Marketing Mgt				5						3	1					2	3	
Medical Administrative Asst/Medical Asst					28						31						39	
Medical Lab Technology				2						7						7		
Music			4						9						6			
Non-Destructive Testing Tech				1						1						5		
Occupational Therapy Asst				12						7						7		
Para Education			3						1						4			
Paralegal Studies				16					1	21						28		
Physical Therapist Asst				16						16						22		
Physics			4						1						9			
Political Science			4						10						9			
Practical Nursing					46						1							
Pre-Teacher Education			16						14						16			
Process Instrumentation Control				6						4						2		
Psychology			27						33						46			
Radiologic Technology				32						30						23		
Railroad Operations									1									
Registered Nursing				106						101						139		
Small Equipment/Vehicle Tech					3						2						2	
Social Science			7						9						1			
Social Work		1	5						7					1	8			
Sociology			12						24						20			
Surgical Technology					15						16						13	
Surveying				6						17						1		
Veterinary Technician																3		
Visual Art & Design (all)				70	5					51	3					47	3	
Welding				2		1				2						5		2
COLLEGE TOTALS	32	74	1851	599	179	41	33	109	1802	517	126	44	43	99	1880	549	125	55

SOURCE: Graduation List from the Registrar's Office

TABLE 23.
DISTRIBUTION OF GRADUATES BY DEGREE
BY MAJOR AND BY GENDER

PROGRAM AREA	MALE						FEMALE						TOTAL					
	2003-2004						2003-2004						2003-2004					
	APE	AA	AS	AAS	CERT	DIP	APE	AA	AS	AAS	CERT	DIP	APE	AA	AS	AAS	CERT	DIP
Accounting				7	1					9	2					16	3	
Apprenticeship (all)				42						1						43		
Architectural Technology			8	3					1	1					9	4		
ASL/Interpreting								9						9				
Automotive Collision Repair & Painting				1												1		
Automotive Technician/Ford Motor				7						1						8		
Aviation Maintenance Technician				8												8		
Aviation Technology/Professional Pilot			9												9			
Barbering/Cosmetology				2	2	1				33	36	46				35	38	47
Biology			5						1						6			
Biotechnology Technician				2						2						4		
Bldg Construction/Construction Mgt (all)			5	22		6			1	2					6	24		6
Business Information Technology (all)										9	1					9	1	
Business Mgt/Log Mgt/Prod Mgt (all)				9	2					3	1					12	3	
Chemistry			17							16					33			
Communications (all)			4							9					13			
Computer Info Systems (all)			17	11					4	1					21	12		
Computer Science			24							2					26			
Criminal Justice			36	1						38	2				74	3		
Culinary Arts				5							2					7		
Dental Hygiene				1							24					25		
Diesel Systems Technology				5												5		
Economics			4							1					5			
Electricity				11	7							1				11	8	
Electronics/Telecommunications				7							2					9		
Engineering (all)	40						3						43					
Engineering Design/Drafting Tech			7	9	9					2					7	11	9	
English		1	3					3	6					4	9			
Environmental Technology			4						1						5			
Family & Human Studies									4	2					4	2		
Finance and Credit				1	2					3	1					4	3	
Fitness Technician				1												1		
General Business		52	152					7	69					59	221			
General Studies			574						686						1260			
Geosciences			1						2						3			
Health Science			9						41						50			
History		10						5						15				
Human Resource Technology										3						3		
Humanities								2						2				
International Studies (all)		4						5						9				
Manufacturing & Automation Tech										1						1		
Marketing Mgt				1	1					1	2					2	3	
Medical Administrative Asst/Medical Asst					3						36						39	
Medical Lab Technology				2						5						7		
Music			1						5						6			
Non-Destructive Testing Tech				5												5		
Occupational Therapy Asst				1						6						7		
Para Education									4						4			
Paralegal Studies				5						23						28		
Physical Therapist Asst				1						21						22		
Physics			5						4						9			
Political Science			4						5						9			
Pre-Teacher Education			1						15						16			
Process Instrumentation Control				2												2		
Psychology			17						29						46			
Radiologic Technology				3						20						23		
Registered Nursing				28						111						139		
Small Equipment/Vehicle Tech					1						1						2	
Social Science			1												1			
Social Work			1					1	7					1	8			
Sociology			9						11						20			
Surgical Technology					4						9						13	
Surveying				1												1		
Veterinary Technician										3						3		
Visual Art & Design (all)				25						22	3					47	3	
Welding				4		2				1						5		2
COLLEGE TOTALS	40	67	918	233	32	9	3	32	962	316	93	46	43	99	1880	549	125	55

SOURCE: Graduation List from the Registrar's Office

TABLE 24.

SALT LAKE COMMUNITY COLLEGE
2004-2005 CURRENT SEMESTER TUITION AND FEE SCHEDULE

2004-2005 TUITION AND FEE SCHEDULE RESIDENT STUDENTS				2004-2005 TUITION AND FEE SCHEDULE NON-RESIDENT STUDENTS		
CREDIT HOURS	REGULAR TUITION	TOTAL MISC. FEES	TOTAL TUITION & FEES	REGULAR TUITION	TOTAL MISC. FEES	TOTAL TUITION & FEES
1	113.00	81.00	194.00	401.00	81.00	482.00
2	186.00	91.00	277.00	656.00	91.00	747.00
3	259.00	101.00	360.00	911.00	101.00	1012.00
4	332.00	111.00	443.00	1166.00	111.00	1277.00
5	405.00	121.00	526.00	1421.00	121.00	1542.00
6	478.00	131.00	609.00	1676.00	131.00	1807.00
7	551.00	141.00	692.00	1931.00	141.00	2072.00
8	624.00	151.00	775.00	2186.00	151.00	2337.00
9	697.00	161.00	858.00	2441.00	161.00	2602.00
10	770.00	171.00	941.00	2696.00	171.00	2867.00
11	843.00	171.00	1014.00	2951.00	171.00	3122.00
12	916.00	171.00	1087.00	3206.00	171.00	3377.00
13	916.00	171.00	1087.00	3206.00	171.00	3377.00
14	916.00	171.00	1087.00	3206.00	171.00	3377.00
15	916.00	171.00	1087.00	3206.00	171.00	3377.00
16	916.00	171.00	1087.00	3206.00	171.00	3377.00
17	916.00	171.00	1087.00	3206.00	171.00	3377.00
18	916.00	171.00	1087.00	3206.00	171.00	3377.00
19	964.00	171.00	1135.00	3374.00	171.00	3545.00
20	1012.00	171.00	1183.00	3542.00	171.00	3713.00
21	1060.00	171.00	1231.00	3710.00	171.00	3881.00
22	1108.00	171.00	1279.00	3878.00	171.00	4049.00
23	1156.00	171.00	1327.00	4046.00	171.00	4217.00
24	1204.00	171.00	1375.00	4214.00	171.00	4385.00
25	1252.00	171.00	1423.00	4382.00	171.00	4553.00

HISTORICAL TUITION AND FEE RATES

CREDIT HOURS	Semester Conversion		1999-00 TUITION/ FEES	2000-01 TUITION/ FEES	2001-02 TUITION/ FEES	2002-03 TUITION/ FEES	2003-04 TUITION/ FEES	2004-05 TUITION/ FEES
	1997-98 TUITION/ FEES	1998-99 TUITION/ FEES						
5								
RESIDENT	240.00	372.50	382.00	395.00	432.00	461.00	495.00	526.00
NON-RES	711.00	1097.00	1131.00	1176.00	1261.00	1331.00	1433.00	1542.00
10								
RESIDENT	430.00	670.00	687.00	710.00	767.00	821.00	882.50	941.00
NON-RES	1321.00	2042.00	2101.00	2181.00	2321.00	2466.00	2665.50	2867.00
15								
RESIDENT	501.00	771.00	791.00	818.00	881.00	945.00	1017.50	1087.00
NON-RES	1560.00	2402.00	2471.00	2565.00	2725.00	2900.00	3138.50	3377.00

TABLE 25.

COST PER STUDENT CREDIT HOUR BY DEPARTMENT (ANNUALIZED FTE) INSTRUCTIONAL COST

DEPARTMENT	00-01*		01-02*		02-03*		03-04*	
	AFTE	\$/SCH	AFTE	\$/SCH	AFTE	\$/SCH	AFTE	\$/SCH
Accounting	265	90	280	84	297	84	304	81
Apprenticeship (all)	547	82	546	70	436	96	378	99
Apprenticeship/Culinary Arts (Prison)					14	115	15	106
Architectural Technology	144	77	103	109	111	84	100	110
ASL/Interpreting	55	310	46	311	46	256	44	242
Automotive Collision Repair & Painting	23	244	21	388	22	148	29	119
Automotive Technician	108	164	113	173	81	187	82	193
Automotive Technician (Prison)					49	104	53	132
Aviation Maintenance Tech	91	173	120	157	115	144	113	189
Aviation Technology/Professional Pilot	60	117	61	156	65	141	49	156
Barbering/Cosmetology	283	163	305	166	388	109	434	102
Biology	658	57	785	52	1063	41	1173	38
Biotechnology			5	611 **	14	321	19	357
Bldg Construction/Construction Mgt	184	167	170	179	61	185	70	162
Bldg Construction (Prison)					105	151	99	171
Business Communication	47	131	32	233	20	299		
Business Economics	208	71	272	52	303	35	326	56
Business Info Technology	167	203	145	213	7	85		
Business Management	327	86	340	88	364	83	433	74
Business Math	72	68	79	44	86	42		
Chemistry	279	57	341	51	412	51	493	40
Communication	494	55	532	57	685	55	724	59
Computer Info Systems	474	55	732	48	687	69	665	74
Computer Science	395	50	149	95	108	84	77	162
Criminal Justice	182	63	238	61	289	64	294	58
Dental Hygiene	42	224	51	229	52	216	46	260
Developmental Education	1378	66	1488	68	1472	64	1459	70
Diesel Systems Technology	19	393	20	460	23	269	18	362
Electrical & Instrumentation Tech	46	294	52	266	51	243	35	373
Electronics/Telecommunications	80	282	92	289	77	217	72	271
Electronics (Prison)					39	161	47	141
Engineering	94	208	113	194	110	238	139	219
Engineering Design/Drafting Tech	51	257	108	125	59	169	56	204
Engin Des/Draft Tech/Arch Tech (Prison)					58	102	49	146
English	833	69	928	73	1008	63	968	69
English Second Language	98	56	114	54	72	72	67	87
Environmental Technology	31	162	35	136	24	186	31	167
Family & Human Studies	129	96	156	82	172	69	165	72
Finance and Credit	166	65	182	71	190	69	211	63
Fine Arts	387	48	423	51	459	60	482	53
Geosciences	215	53	238	49	238	42	245	46
Graphic Communication (Moved to VAD)	51	150						
Health & Lifetime Activities	401	80	453	81	525	77	662	64
History	439	43	489	39	496	39	511	42
Humanities	546	48	607	45	635	42	626	49
Languages	301	67	318	63	305	62	300	69
Manufacturing & Automation Tech	37	229	37	227	9	219		
Marketing Mgt	56	155	58	139	99	108	114	143
Mathematics	1254	46	1420	44	1559	44	1574	43
Medical Assistant/Medical Admin Asst	85	115	104	107	135	91	154	96
Medical Lab Technology	1	506	11	34	16	N/A	18	22
Non-Destructive Testing Tech	3	631	27	102	22	136	15	225
Nursing	218	158	182	225	175	194	215	200
Occupational Therapy Asst	21	183	21	156	19	183	24	204
Paralegal Studies	59	163	82	87	101	72	103	77
Physical Therapist Asst	40	153	43	157	48	144	53	151
Physics	248	54	265	44	300	30	279	41
Political Science	133	65	140	61	159	61	170	53
Pre-Teacher Education	36	72	46	75	49	81	37	79
Psychology	414	53	456	50	539	44	608	41
Radiologic Technology	55	96	63	93	57	113	62	121
Related Instruction	16	178	15	190				
Short-Term Intensive Training	149	53	131	57	44	106	24	309
Small Equipment/Vehicle Tech	12	201	16	155				
Social Work	31	85	39	79	52	67	61	53
Sociology	227	56	267	50	283	46	282	50
Surgical Technology	15	162	17	145	16	192	12	257
Surveying	20	48	23	46	17	N/A		
Veterinary Technician			23	185	8	129		
Visual Art & Design	474	97	548	98	569	84	552	95
Visual Art & Design (Prison)					17	89	10	126
Welding	30	286	35	268	37	242	41	189
INSTRUCTIONAL TOTALS	14004	85	15351	84	16223	71	16571	74

NOTE: * 2000-01 to 2003-04 \$/SCH do not include Leases and SCC Instructional Equipment

** New program start up costs

TABLE 26.

COST PER FULL-TIME EQUIVALENT (FTE) BY DEPARTMENT (ANNUALIZED FTE) INSTRUCTIONAL COST

DEPARTMENT	00-01*		01-02*		02-03*		03-04*	
	AFTE	\$/FTE	AFTE	\$/FTE	AFTE	\$/FTE	AFTE	\$/FTE
Accounting	265	2714	280	2517	297	2524	304	2420
Apprenticeship (all)	547	2459	546	2096	436	2865	378	2984
Apprenticeship/Culinary Arts (Prison)					14	3438	15	3195
Architectural Technology	144	2314	103	3284	111	2534	100	3289
ASL/Interpreting	55	9300	46	9327	46	7682	44	7274
Automotive Collision Repair & Painting	23	7322	21	11630	22	4434	29	3565
Automotive Technician	108	4911	113	5191	81	5624	82	5779
Automotive Technician (Prison)					49	3129	53	3960
Aviation Maintenance Tech	91	5191	120	4697	115	4312	113	5679
Aviation Technology/Professional Pilot	60	3513	61	4686	65	4238	49	4694
Barbering/Cosmetology	283	4899	305	4975	388	3258	434	3067
Biology	658	1708	785	1569	1063	1237	1173	1128
Biotechnology			5	18333 **	14	9629	19	10709
Bldg Construction/Construction Mgt	184	5009	170	5365	61	5545	70	4864
Bldg Construction (Prison)					105	4533	99	5119
Business Communication	47	3936	32	7002	20	8970		
Business Economics	208	2137	272	1550	303	1062	326	1665
Business Info Technology	167	6103	145	6405	7	2546		
Business Management	327	2584	340	2630	364	2492	433	2218
Business Math	72	2050	79	1310	86	1264		
Chemistry	279	1709	341	1543	412	1536	493	1206
Communication	494	1636	532	1707	685	1664	724	1780
Computer Info Systems	474	1664	732	1434	687	2062	665	2231
Computer Science	395	1499	149	2850	108	2530	77	4862
Criminal Justice	182	1902	238	1825	289	1918	294	1726
Dental Hygiene	42	6715	51	6860	52	6481	46	7795
Developmental Education	1378	1995	1488	2046	1472	1911	1459	2090
Diesel Systems Technology	19	11791	20	13806	23	8077	18	10870
Electrical & Instrumentation Tech	46	8822	52	7994	51	7303	35	11193
Electronics/Telecommunications	80	8461	92	8671	77	6519	72	8126
Electronics (Prison)					39	4831	47	4240
Engineering	94	6241	113	5814	110	7125	139	6564
Engineering Design/Drafting Tech	51	7715	108	3759	59	5060	56	6124
Engin Des/Draft Tech/Arch Tech (Prison)					58	3051	49	4375
English	833	2068	928	2185	1008	1898	968	2056
English Second Language	98	1686	114	1631	72	2172	67	2597
Environmental Technology	31	4870	35	4085	24	5571	31	4995
Family & Human Studies	129	2868	156	2468	172	2058	165	2159
Finance and Credit	166	1961	182	2127	190	2076	211	1892
Fine Arts	387	1439	423	1536	459	1812	482	1592
Geosciences	215	1586	238	1470	238	1261	245	1393
Graphic Communication (Moved to VAD)	51	4503						
Health & Lifetime Activities	401	2400	453	2434	525	2315	662	1935
History	439	1275	489	1177	496	1158	511	1247
Humanities	546	1454	607	1353	635	1272	626	1464
Languages	301	2006	318	1903	305	1865	300	2056
Manufacturing & Automation Tech	37	6881	37	6806	9	6568		
Marketing Mgt	56	4660	58	4183	99	3251	114	4284
Mathematics	1254	1385	1420	1326	1559	1330	1574	1287
Medical Assistant/Medical Admin Asst	85	3451	104	3202	135	2736	154	2888
Medical Lab Technology	1	15175	11	1031	16	N/A	18	647
Non-Destructive Testing Tech	3	18915	27	3068	22	4092	15	6764
Nursing	218	4727	182	6754	175	5818	215	5986
Occupational Therapy Asst	21	5477	21	4684	19	5475	24	6121
Paralegal Studies	59	4891	82	2616	101	2163	103	2320
Physical Therapist Asst	40	4604	43	4713	48	4316	53	4536
Physics	248	1628	265	1318	300	899	279	1236
Political Science	133	1943	140	1818	159	1832	170	1594
Pre-Teacher Education	36	2168	46	2241	49	2417	37	2381
Psychology	414	1595	456	1491	539	1330	608	1230
Radiologic Technology	55	2879	63	2797	57	3387	62	3626
Related Instruction	16	5345	15	5703				
Short-Term Intensive Training	149	1604	131	1719	44	3171	24	9266
Small Equipment/Vehicle Tech	12	6043	16	4649				
Social Work	31	2560	39	2356	52	2003	61	1580
Sociology	227	1668	267	1508	283	1374	282	1500
Surgical Technology	15	4861	17	4364	16	5753	12	7713
Surveying	20	1431	23	1372	17	N/A		
Veterinary Technician			23	5558	8	3863		
Visual Art & Design	474	2924	548	2949	569	2525	552	2849
Visual Art & Design (Prison)					17	2669	10	3792
Welding	30	8591	35	8051	37	7267	41	5682
INSTRUCTIONAL TOTALS	14004	2540	15351	2523	16223	2140	16571	2226

NOTE: \$'s/FTE reflect actual costs

* 2000-01 to 2003-04 \$/FTE do not include Leases and SCC Instructional Equipment

** New program start up costs

TABLE 27.

**COSTS PER FTE (Full-Time Equivalent) STUDENT AT SLCC
(Current and Adjusted for Inflation)**

Academic Year	Cost Per Student	Inflation Rate (CPI)	Adjusted Cost Per Student
1986-87	3156.00	109.60	2879.56
1987-88	3030.00	113.60	2667.25
1988-89	3295.00	118.30	2785.29
1989-90	3253.00	124.00	2623.39
1990-91	3545.00	130.70	2712.32
1991-92	3693.00	136.20	2711.45
1992-93	3959.00	140.30	2821.81
1993-94	4016.00	144.50	2779.24
1994-95	4319.00	148.20	2914.30
1995-96	4478.00	152.40	2938.32
1996-97	4432.00	156.90	2824.73
1997-98	4367.00	160.50	2720.87
1998-99	4856.00	163.00	2979.14
1999-00	4788.00	166.60	2873.95
2000-01	4887.00	172.20	2837.98
2001-02	4913.00	177.10	2774.14
2002-03	4550.00	179.90	2529.18
2003-04	4641.00	184.00	2522.28

SOURCE: 1986-87 to 2003-04, Reported Actuals
(Includes Tuition Waivers)

United States Consumer Price Index (CPI),
1982-1984 = 100

TABLE 28.

**SALT LAKE COMMUNITY COLLEGE
DEPARTMENT OF FINANCIAL AID**

TYPES OF FINANCIAL ASSISTANCE	1993-94	2003-04	% INCREASE/ DECREASE
* Pell Grant	\$6,454,917	\$14,083,305	118.18%
* Supplemental Educational Opportunity Grant	\$485,607	\$476,103	-1.96%
* Federal Work Study	\$343,351	\$371,332	8.15%
* UCOPE (State) Work Study	N/A	\$241,289	N/A
* Perkins Student Loans	\$638,195	\$1,177,418	84.49%
* Stafford (Subsidized and Unsubsidized), and PLUS Student Loans	\$3,044,089	\$8,566,845	181.43%

Estimate: 13,038 students received some form of Aid in 2003-04.

In 2003-04, approximately 49,088 student contacts were made through the Financial Aid Department.

In 2003-04, \$1,085,544 student tuition waivers were granted.

In 2003-04, \$973,309 outside scholarships were disbursed.

In 2003-04, \$811,211 in State Aid was disbursed.

SOURCE: Cristi Easton, Financial Aid Director

TABLE/GRAPH 29.

**SALT LAKE COMMUNITY COLLEGE
2003-2004 EDUCATION AND GENERAL
REVENUE SOURCES AND EXPENDITURES**

REVENUE SOURCES

Tuition and Fees	\$ 35,322,056
State Appropriations	49,584,698
Other Sources	294,144

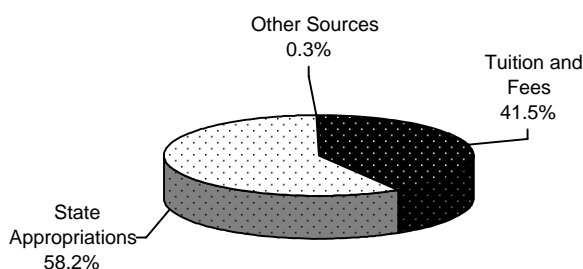
TOTAL \$ 85,200,898

EXPENDITURES

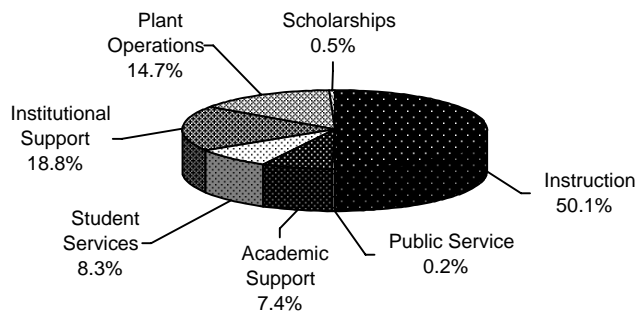
Instruction	\$ 37,992,846
Public Service	164,913
Academic Support	5,628,759
Student Services	6,318,200
Institutional Support	14,247,414
Plant Operations	11,180,210
Scholarships	346,100

TOTAL \$ 75,878,442 *

**EDUCATION & GENERAL
REVENUE SOURCES - FY 2003-2004**



**EDUCATION & GENERAL
EXPENDITURES - FY 2003-2004**



NOTE: * Total does not include mandatory and non-mandatory transfers.

TABLE/GRAPH 30.

**SALT LAKE COMMUNITY COLLEGE
2003-2004 TOTAL CURRENT FUNDS
REVENUE SOURCES AND EXPENDITURES**

REVENUE SOURCES

Tuition and Fees	\$ 44,531,282
State Appropriations	53,272,249
Govt. Contracts & Grants	22,534,651
Auxiliary Enterprises	10,666,406
Other Sources	4,114,771

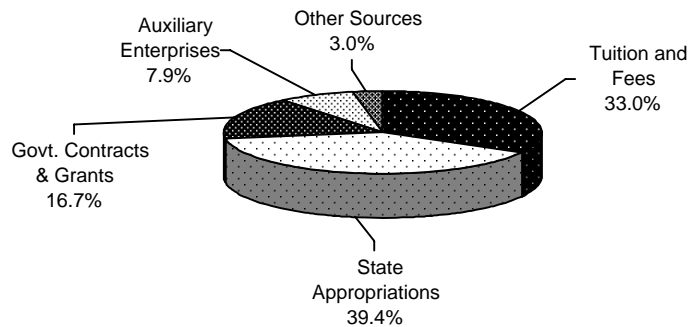
TOTAL \$ 135,119,359

EXPENDITURES

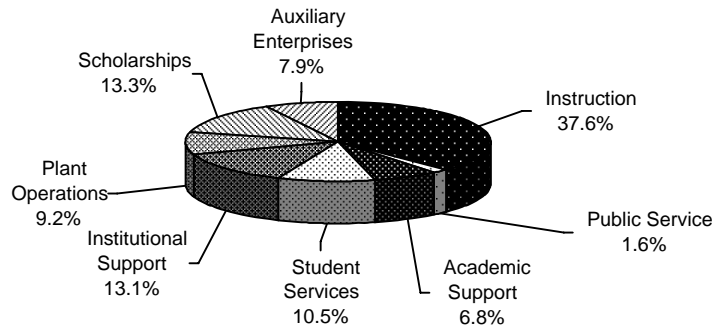
Instruction	\$ 46,564,447
Public Service	1,950,837
Academic Support	8,450,429
Student Services	12,945,664
Institutional Support	16,164,325
Plant Operations	11,439,296
Scholarships	16,455,365
Auxiliary Enterprises	9,796,069

TOTAL \$ 123,766,432 *

**TOTAL CURRENT FUNDS
REVENUE SOURCES - FY 2003-2004**



**TOTAL CURRENT FUNDS
EXPENDITURES - FY 2003-2004**



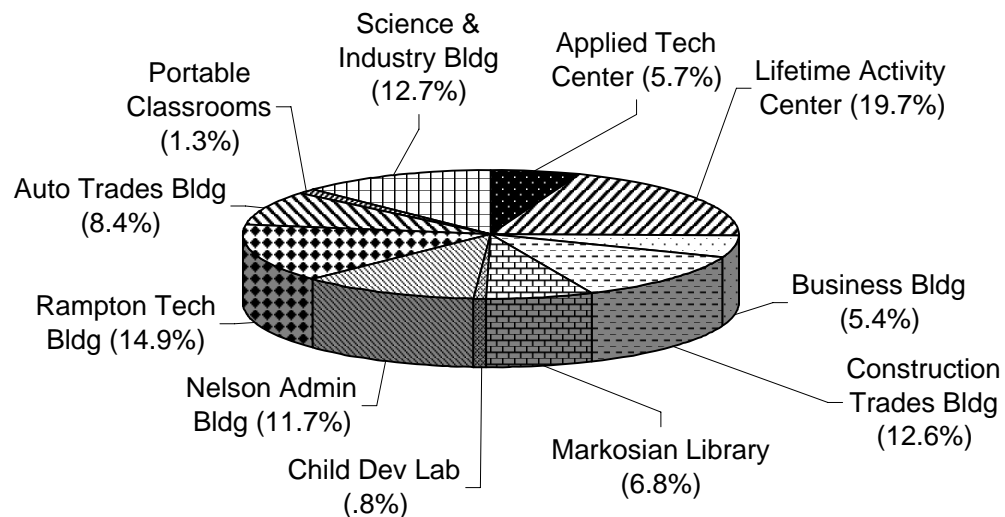
NOTE: * Total does not include mandatory and non-mandatory transfers.

TABLE/GRAPH 31.

**SALT LAKE COMMUNITY COLLEGE
BUILDING PROFILE
INSTRUCTIONAL BUILDINGS (REDWOOD CAMPUS)
BASED ON GROSS SQUARE FEET**

BUILDING	GROSS SQUARE FEET
Lifetime Activity Center	179,637
Rampton Technology Bldg	135,562
Science & Industry Bldg	116,000
Construction Trades Bldg	114,658
Nelson Administration Bldg	106,817
Auto Trades Building	76,197
Markosian Library	62,000
Applied Technology Center	51,905
Business Building	49,500
Portable Classrooms (4-12)	11,647
Child Development Lab	7,510
TOTAL	911,433

**BUILDING PROFILE
INSTRUCTIONAL BUILDINGS (GROSS SQUARE FEET)**

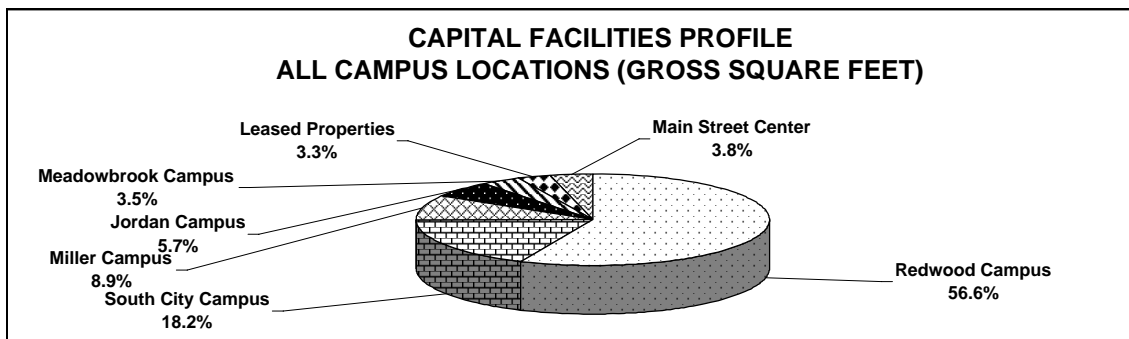


TABLE/GRAPH 32.

**SALT LAKE COMMUNITY COLLEGE
CAPITAL FACILITIES PROFILE
ALL CAMPUS LOCATIONS
BASED ON GROSS SQUARE FEET**

BUILDING	GROSS SQUARE FEET	BUILDING	GROSS SQUARE FEET
REDWOOD CAMPUS		SOUTH CITY CAMPUS	
Lifetime Activity Center	179,637	Main Building	340,185
Student Center	166,088	Shop Building	24,762
Rampton Technology Bldg	135,562	TOTAL	364,947
Science & Industry Bldg	116,000		
Construction Trades Bldg	114,658		
Nelson Administration Bldg	106,817	MAIN STREET CENTER	
Auto Trades Building	76,197	Main Street Center	75,989
Markosian Library	62,000	TOTAL	75,989
Applied Technology Center	51,905		
Business Building	49,500		
Facilities Complex 048	13,600	LEASED PROPERTIES	
Facilities Complex 049	9,000	Sandy Center A,B,C	29,061
Institutional Residence	8,343	Airport Center	15,563
Portable Classrooms (8-12)	7,840	Draper Center	8,033
Heating Plant	7,580	Tooele Center #1	6,100
Child Development Lab	7,510	Airport Exec - Annex 1	3,463
Portable Offices (1-4)	4,566	Tooele Center #2	2,083
Testing and Careers	4,011	Community Writing Center	1,262
Portable Classrooms (4-7)	3,807	TOTAL	65,565
Photo Studio (Utilities)	3,593		
Facilities Complex 052	2,000		
Alder Amphitheater	1,607	MEADOWBROOK CAMPUS	
Photo Lab (AHEC)	1,456	Building A	26,954
Facilities Complex 056	1,200	Building C	25,844
Facilities Complex 055	1,008	Building B	17,608
TOTAL	1,135,485	TOTAL	70,406
MILLER CAMPUS		JORDAN CAMPUS	
Auto Training Center	48,820	Jordan High Tech Center	89,819
Miller Free Enterprise Center	48,650	Student Pavilion	14,055
Corporate Partnership Center	43,750	Jordan Distribution Cntr (Includes Tunnel)	11,270
Miller Professional Development Center	37,935	Pump House	150
Karen Gail Miller		TOTAL	115,294
TOTAL	179,155		

SOURCE: Kathy Shipley, Facilities Specialis



EXPLANATION OF THE STUDENT FOLLOW-UP SYSTEMS

On a yearly basis Salt Lake Community College (SLCC) conducts student surveys eliciting certain kinds of information about the College. The NEW STUDENT SURVEY is sent to students enrolled Fall Semester who have not previously attended SLCC. The NON-RETURNING STUDENT SURVEY is sent to those students who attended SLCC during Fall Semester but who were not enrolled Spring Semester. The GRADUATING STUDENT SURVEY is collected from students who are applying for graduation during the school year.

While the response rate does vary from year to year, we typically receive between 20% to 30% responses from the NEW STUDENT AND NON-RETURNING STUDENT SURVEYS, and 40% to 50% from the GRADUATING STUDENT SURVEY. Strictly speaking the results cannot be generalized; however, the responses are considered workable and are used in various ways by SLCC faculty, staff and administration.

Data from each survey instrument is entered into a software package called "**STATISTICAL PACKAGE FOR THE SOCIAL SCIENCES**" and the results are generated directly from those data. The results that are included present each question that was asked of each of the respondents followed by the resulting percentages.

If you have any questions concerning any facet of the Student Follow-Up system, please contact Maurene Williams, in the Office of Institutional Research at SLCC at (801) 957-4198.

TABLE 33.

**SALT LAKE COMMUNITY COLLEGE
2003-2004 NEW STUDENT SURVEY SUMMARY**

ALL NEW FALL SEMESTER STUDENTS
1,425 of 5,336 (27% response)

**SATISFACTION RESPONSE PERCENTAGES FOR SELECTED
SLCC PROGRAMS AND SERVICES
(Percentages are of those using the service.)**

	<u>VERY SATISFIED</u>	<u>SATISFIED</u>	<u>UN- CERTAIN</u>	<u>DIS- SATISFIED</u>	<u>VERY DIS- SATISFIED</u>
Your overall satisfaction with your SLCC experience	29%	54%	12%	4%	1%
The quality of academic advising information	17%	47%	22%	10%	4%
Availability of helpful information on careers	14%	42%	34%	7%	3%
The efficiency of going through the steps of admission	31%	47%	11%	8%	3%
The helpfulness and courtesy of the financial aid staff	23%	36%	23%	10%	8%
Ability to enroll in desired classes this semester	33%	41%	10%	13%	3%
Timely feedback from instructors on how you are doing in class	26%	43%	19%	9%	3%
Your class sizes are conducive to learning	47%	45%	5%	2%	1%
The quality of the courses you are taking	36%	50%	10%	3%	1%
Ease of obtaining information about campus & programs	22%	51%	19%	6%	2%
Helpfulness of the college Information received	23%	54%	17%	4%	2%
Friendliness of faculty and their response to student needs	45%	43%	8%	3%	1%

TABLE 33.

**SALT LAKE COMMUNITY COLLEGE
2003-2004 NEW STUDENT SURVEY SUMMARY (Continued)**

**PRIMARY EDUCATIONAL OBJECTIVE
AT SLCC AND FUTURE JOB OR
CAREER GOAL**

Primary objective in Attending SLCC

46%	Earn degree and transfer
26%	Earn degree and work in that field
19%	Transfer before degree
5%	Other
2%	Upgrade skills in present job
1%	Take some courses and get a new job
1%	No Response

Future job or Career Goal

51%	Stated goal: major related
3%	Stated goal: Not major related
34%	Undecided, etc.
12%	No Response

**TOTAL SEMESTERS (including this one)
PLANNING TO ATTEND SLCC?**

5%	1
11%	2
8%	3
27%	4
8%	5
15%	6
2%	7
12%	8 and above
12%	No Response

**HOW DID YOU REGISTER FOR
CLASSES?**

80%	Electronic (on-line with STUDENT NET)
3%	In person on campus
15%	By phone with TOUCHNET
2%	No Response

**HOW MANY HOURS A WEEK WERE YOU
EMPLOYED WHILE ALSO ATTENDING
COLLEGE?**

20%	None
17%	1 – 19 hours
33%	20 – 39 hours
19%	40 hours
10%	40+
1%	No Response

**CURRENTLY ENROLLED FOR CREDIT AT
ANOTHER COLLEGE IN ADDITION
TO SLCC?**

93%	No
4%	Yes
3%	No Response

WHAT IS YOUR AGE GROUP?

2%	Under 18
68%	18 - 24
15%	25 - 34
15%	35 & over

ARE YOU?

37%	Male
62%	Female
1%	No Response

TABLE 34.

**SALT LAKE COMMUNITY COLLEGE
2003-2004 STUDENT FOLLOW-UP SURVEY SUMMARY (NON-RETURNING)**

ALL NON-RETURNING STUDENTS

1,160 of 6,861 (17% response)

What was your primary objective in attending SLCC?

43%	To earn an Associate degree and transfer to a 4 year school
17%	To take some courses and transfer before earning a degree at SLCC
22%	To earn a degree or certificate at SLCC and go to work in that field
5%	To take some courses to upgrade my skills in my present job
3%	To take some courses and apply for a new job
8%	Other
2%	No Response

Why I did not re-enroll in the Spring Semester?

85%	Personal reasons
10%	Related to the college
5%	No Response

How many semesters did you complete at SLCC?

28%	1
16%	2
14%	3
10%	4
7%	5
4%	6
2%	7
5%	8 and above
14%	No Response

What was your total general grade point average?

3%	Less than 2.00
5%	2.00 - 2.49
10%	2.50 - 2.99
60%	3.00 - 4.00
17%	Do Not Know
5%	No Response

Do you intend to return and re-enroll at SLCC?

45%	Yes, with a year
12%	Yes, but don't know exactly when
19%	Uncertain about whether or not
19%	Do not plan to return
5%	No Response

What was your credit hour enrollment last semester?

36%	1 - 5 credit hours
36%	6 - 11 credit hours
18%	12 - 14 credit hours
5%	15+ credit hours
5%	No response

What is your age group?

1%	Under 18
54%	18 - 24
23%	25 - 34
21%	35 & over
1%	No Response

How many hours a week do you work in a week?

10%	None
9%	1 - 19
25%	20 - 39
28%	40
21%	40 +
7%	No Response

Are you?

38%	Male
61%	Female
1%	No Response

TABLE 34.

**SALT LAKE COMMUNITY COLLEGE
2003-2004 STUDENT FOLLOW-UP SURVEY SUMMARY (NON-RETURNING)
(Continued)**

While you were attending SLCC, were you affected by any of the Following Situations?

	<u>Not a Problem</u>	<u>Minor Problem</u>	<u>Problem</u>	<u>Major Problem</u>	<u>No Response</u>
I experienced financial difficulties.	37%	24%	18%	17%	4%
Family responsibilities made it difficult to attend.	60%	18%	10%	8%	4%
Attendance conflicted with my work schedule.	51%	25%	12%	8%	4%
Classes were not available when I needed them.	46%	23%	15%	12%	4%
Courses were not challenging enough.	79%	12%	3%	2%	4%
I found the course work too difficult.	75%	16%	3%	1%	5%
I couldn't decide on a major program or field of study.	74%	13%	6%	2%	5%
I was uncertain whether I wanted to be in college.	82%	9%	2%	2%	5%
I experienced health or other personal problems.	70%	11%	8%	7%	4%
I felt out of place at SLCC.	83%	9%	3%	1%	4%
I could not find the time for classes and assignments.	65%	22%	7%	2%	4%
I lacked the motivation to study and complete assignments.	70%	18%	5%	3%	4%
Taking only a few courses at a time is slow and discouraging.	58%	20%	12%	6%	4%

Evaluate the areas that apply to you (Percentages are those using the services.)

	<u>Very Satisfied</u>	<u>Satisfied</u>	<u>Uncertain</u>	<u>Dis- Satisfied</u>	<u>Very Dis- Satisfied</u>
Overall satisfaction with your SLCC experience.	24%	59%	11%	3%	3%
Quality of academic advising info.	17%	39%	25%	13%	6%
Availability of helpful information on careers.	13%	34%	38%	11%	4%
Timely feedback from instructors on how you were doing in class.	25%	47%	17%	8%	3%
Quality of the courses you were taking.	26%	57%	10%	4%	3%

TABLE 35.

**SALT LAKE COMMUNITY COLLEGE
2003-2004 GRADUATING STUDENT SURVEY**

1,320 of 2,751 (48% response)

What was your primary objective in attending SLCC?

70%	University/college transfer credit
21%	Preparation for job to be obtained
3%	Improvement/upgrade of skills for present job
3%	Personal interest
2%	Other
1%	No Response

What are your plans after graduation?

60%	Transfer to a four year college/university
13%	Obtain a job in my field
4%	Keep present job
1%	Obtain a job in a different field
22%	Other
0%	No Response

Which statement best describes your feelings about your educational experience at SLCC?

28%	Very satisfied
53%	Satisfied
15%	Average
2%	Disappointed
2%	No Response

How have or will the SLCC courses you have completed help you in your occupational area?

52%	Will help me to obtain job
12%	Has helped performance on present job
10%	Has helped me to obtain a job
5%	Has helped me with advancement on present job
19%	Other
2%	No Response

How well did the SLCC courses you have completed prepare you for continuing your education?

26%	My preparation was excellent
57%	My preparation was satisfactory
14%	My preparation was good in some areas
2%	My preparation was fair, but all areas could have been better
1%	No Response

How do you see the courses completed at SLCC in terms of your career plans?

26%	Of immediate, direct benefit
53%	Of long-term, direct benefit
18%	Of indirect benefit
1%	Of no benefit
2%	No Response

If you used any of the college services listed below, rate them according to how well they fulfilled your individual needs. (Students rated services from "1 = very poor" through "5 = very good".)

	Mean
Academic/Career Advising	3.83
Admissions	3.95
Athletic Events	3.62
Child Care Center	3.68
College Bookstore	3.87
Computer Labs	4.17
Financial Aid	3.81
Food Services	3.85
Health Center	4.06
Intramural Programs	3.71
Library Services	4.08
Parking Services	3.16
Recreational Facilities	4.00
Registration	3.98
Student Activities	3.73
Student Placement Services	3.58
Tutorial/Learning Center	3.94
Veterans' Services	3.74

Rate the following according to how well they fulfilled your individual needs. (Students rated services from "1 = very poor" through "5 = very good".)

	Mean
Campus environment	4.06
Class size(s)	4.25
Concern for student needs	3.76
Content of course(s)	3.92
Grading/Testing	3.89
Instructor(s) interest	3.99
Location of classes	4.07
Quality of instruction	3.98
Quality of service	3.89

INTRODUCTION

SLCC SKILLS CENTER

Mission Statement

The Salt Lake Community College Skills Center represents the State's commitment to provide quality vocational/technical training for people who are educationally, socially, and economically disadvantaged and people with disabilities. The Skills Center offers open-entry/open-exit, competency-based, non-credit courses and intensive student support services. Programs and services are individualized, flexible, and responsive to business and industry requirements and the education and training needs of an ever-changing, diverse community.

History

The Skills Center has a long tradition of providing short-term basic skills training, vocational training and job placement services for the disadvantaged. It was initially established in December of 1970, when the Utah Manpower Council's Human Resource Center and the Work Incentive (WIN) High School were combined to form the Salt Lake Skills Center. At that time, responsibility for the Skills Center was placed with the Utah State Board for Vocational Education. Both Manpower and WIN were programs specifically designed to provide training and job placement services to the unemployed and underemployed.

On July 1, 1972, the Salt Lake Skills Center was placed under the direction of Utah Technical College at Salt Lake, which became Salt Lake Community College in April 1987. In 1973, the Manpower program was replaced by the Comprehensive Employment and Training Act (CETA), which became a major source of funding for Skills Center students.

In its 1992 general session, the Utah State Legislature enacted H.B. No. 235 which officially specifically defined the mission of the Salt Lake Skills Center as follows:

The center shall provide short-term, intensive, noncredit, vocational-technical training specifically designed for economically disadvantaged students and educationally disadvantaged students.

Training at the center shall focus on immediate job entry skills.

This legislation also changed the general control and supervision of the Skills Center from the Utah State Board of Education to the Utah State Board of Regents, and specifies that "Salt Lake Community College shall administer the center under the board's supervision."

This unique situation provides the opportunity for the Skills Center to deliver intensive, individualized student support services and open-entry, open-exit, competency based instruction designed to meet the needs of disadvantaged students, a population whose needs are often not met in a traditional college

environment. The mission of the Skills Center is integrated with, and directly supports the open door, student-focused mission of SLCC, a comprehensive community college.

Throughout changes in funding and governance, the mission of the Skills Center has remained to provide short-term, open-entry/open-exit basic skills and vocational training and job placement services for the educationally, economically, and socially disadvantaged, and to persons with disabilities. As stated by Jay Nelson in The First Thirty Years (p. 175),

The Utah Technical College Skills Center division has made significant contributions to the students who have attended. The community has accepted, applauded, and supported the accomplishments of the Center, and the college is highly respected for having done what it could to serve the disadvantaged community.

This statement remains true today as it relates to the Salt Lake Community College Skills Center.

Goals

The goal of the Skills Center is to provide students with entry-level vocational skills leading to job placement. Programs are designed to provide open-entry/open-exit, competency-based, hands-on, vocational instruction which encourages students to work at their own pace. The aim is to achieve two goals: first, to help individuals find an area of education and/or training that will fit their needs, and second, to provide business and industry with a source of workers who will find satisfaction in their work and stay on the job.

To this end, the Skills Center cooperates with business and industry in the Wasatch Front South Area and Tooele to help them find workers that match job skills and interests with available jobs.

Special Support Services

Assessment - Students entering Skills Center programs receive individualized assessment of basic skills and aptitudes as they relate to the student's proposed training program. This assessment process helps to ensure that they have the interest and aptitude recommended for the successful completion of the program in which they choose to enroll. Career exploration and more in-depth assessment are provided for students who are undecided in regard to a training program.

Admissions Advisors - Admissions advisors review vocational evaluation information with each student after assessment is completed. The purpose of this review is to assist students in understanding evaluation results that include data on academic skills, occupational interests, work values, and aptitude strengths and weaknesses. The session with the admissions advisor helps students establish their

career objectives and enables the advisor to assess whether or not the student's interest and aptitude are sufficient to promote success and retention in the program. This service provides the student with necessary information to make meaningful training and employment decisions.

New Student Orientation - New student orientation is held every Friday and class work begins on the following Monday. Salt Lake Community College policies and procedures, including the Student Code, are explained to new students. Disability Resource Center and Career Resources services are introduced. Instructional Advisors meet with students and outline basic attendance policies and specific requirements for each class. All daytime students are required to attend the orientation class on the Friday prior to the beginning of their training program; evening students will meet with their Instructional Advisor before the first class session.

Instructional Advisors - Instructional advisors meet with students on a regular basis to ensure that students are progressing through the training program successfully. As the student advocate, the instructional advisor plays a major role in keeping students in training programs by helping them overcome obstacles that may interfere with their successful completion of the program and eventually with success on the job. Instructional advisors also help students with any special assistance that they may need to be successful during their training. To that end, instructional advisors may refer students to other services offered by the Skills Center or work directly with the sponsoring agency to determine how to best meet the needs of the student.

Financial Aid Advisor - The financial aid advisor advises and assists students applying for Title IV and state funding. The advisor determines eligibility, aid options, requirements, packages financial aid and monitors satisfactory progress for students awarded financial aid in the clock hour programs.

Veterans' Advisor - The veterans' advisor coordinates with the veterans administration and veterans in certifying enrollment of veterans in eligible clock hour programs. The advisor counsels veterans on program eligibility and veterans education benefits and monitors satisfactory progress on certified veterans.

Disability Support Services - Students with disabilities may receive assistance, under the Americans With Disabilities Act (ADA) through Disability Resource Center (DRC). Services are coordinated through the DRC advisor and include academic and career counseling, plus accommodations for documented disabilities include: note-taking, interpreting, testing accommodations, adaptive equipment and assistive technology as well as alternative text formats and accessible furniture for classrooms. Study skills workshops and support in addressing special needs with teachers and employers and other related issues are provided. The DRC advisor also serves as campus liaison with the Division of Rehabilitation Services. Students must apply through the DRC office in order to receive services.

Career Resources - The Skills Center is committed to helping students actively participate in obtaining employment on completion of their training programs. Professional staff members of the Skills Center Career Resources Office offer employment workshops (job-seeking and retention skills workshop that provide skills assessment). Topics include how to handle the job interview, filling out applications, preparing resumes, and tapping into the hidden job market. The staff provides personalized employment services and current labor market information. The Career Resources Office also serves students seeking part-time, temporary, or full-time employment while in school.

SALT LAKE COMMUNITY COLLEGE SKILLS CENTER VISION STATEMENT

The Skills Center serves its customers by providing short-term, competency-based vocational training which effectively prepares students to seek, obtain, and retain employment in the current job market.

Our customer, THE STUDENT, knows us for...

A wide variety of vocational training programs which include the following:

- X Faculty who are positive, highly qualified, and sensitive to individual needs
- X Support staff who are sensitive and dedicated to student success
- X Excellent, up-to-date facilities and equipment

Support services and assistance which support education by providing the following:

- X Financial aid and planning
- X Day care and transportation solutions
- X Accommodations for persons with disabilities

Flexible enrollment and scheduling options

Individual program selection and vocational guidance

Employment assistance

Our customer, THE EMPLOYER, knows us for...

Providing employees who are competent in the areas in which they have been certified

Participating with employers to create customized programs

Providing on-campus and/or on-site training

Using an employer-faculty council (Program Advisory Committee) to guide curriculum development

Advertising and promoting available job openings

Our customer, THE AGENCY, knows us for...

Being fully committed to the success of each student

Providing information and reports in a timely manner

Effectively assessing and advising students to determine vocational goals and removing barriers to achieve them

Ensuring full accessibility and Americans with Disabilities Act (ADA) Compliance

Fostering partnerships between businesses and the Skills Center

Our wide diversity of students, staff and faculty

Our customer, THE SKILLS CENTER, knows us for...

Our determination to exceed all our customers= expectations

Our vision to grow and develop in the following areas:

- X Exerting extensive efforts to promote awareness of the excellent short-term programs and vocational services offered by the Skills Center to the entire community
- X Increasing our available facilities by developing portable programs and expanding on-site training
- X Developing alternative funding sources by soliciting support from public and private foundations, corporate sponsors, etc.
- X Supporting involvement in cooperative work experience which allows faculty to update their knowledge of current industry standards and procedures

Our customer, THE LEGISLATURE, knows us for...

The most cost-effective, outcome-oriented, short-term training option in the state

Our high rates of enrollment, retention, completion, and employment

Our focus on the students to assist them in becoming self-sufficient, taxpaying employees

Our customer, THE EMPLOYEE, knows us for...

Meeting the needs of employees in a positive, timely manner

Providing technical and logistical support and training

Offering incentives for continued educational development of all employees

Equitable, ethical treatment in the areas of pay, benefits, and workplace safety

A supportive, friendly environment which recognizes achievement and encourages innovation, information exchange, and cooperation between faculty and staff to serve student needs

Open communication where students, faculty, and staff are free to express opinions and ideas without fear of reprisal

Our customer, THE COMMUNITY, knows us for...

Our excellent vocational programs, positive reputation, and global public image

Being aware of and sensitive to diverse community needs

Making communities better by promoting employee and student volunteer service

Fostering the development of community values

Vocational assessment and exploration

Our customer, OTHER EDUCATIONAL INSTITUTIONS, knows us for...

Acting as a stepping-stone to prepare students for further education

Being a viable alternative for at-risk youth/students

An open and mutually supportive relationship which enables and encourages students to continue their education after finding employment

TABLE 36.

SKILLS CENTER ENROLLMENTS

(Includes Carry-Ins From Fiscal Year to Fiscal Year)

DEPARTMENT	96-97	97-98	98-99	99-00	00-01	01-02	02-03	03-04
ACCOUNTING CLERK **								43
ADULT BASIC EDUCATION	204	202	205	222	197	266	235	246
BASIC HEALTH RECORDS *								23
CARPENTRY & HAZMAT REMOVAL								25
CERTIFIED NURSE ASSISTANT	128	127	142	130	137	174	279	266
CERTIFIED NURSE ASSISTANT (Spanish to English)								2
COMPUTER SUPPORT SPECIALIST (A+ Certification)								60
COMPUTER TECHNOLOGY BASICS				154	102	80	17	7
CUSTOMER SERVICE/RECEPTIONIST **								20
DATA ENTRY FOR MEDICAL BILLING *								29
DIESEL SYSTEMS TECHNOLOGY	18	20	10	19	25	20	24	24
ELECTRONICS TECHNICIAN	88	111	271	52	41	42	35	23
ENGLISH AS A SECOND LANGUAGE	488	531	492	594	713	741	499	289
GED				52	88	149	128	133
GENERAL CLERK *								19
HEALTH INFORMATION TECH	37	28	43	56	74	103	109	41
HEALTH UNIT COORDINATOR	59	63	46	59	49	68	34	17
LAN TECHNICIAN	84	75	127	90	100	79	41	5
LINUX NETWORK ADMINISTRATOR *								3
LINUX SUPPORT SPECIALIST *								2
MEDICAL CODING PROCEDURES *								30
NETWORK ENGINEER								15
OFFICE CLERK *								23
OFFICE INFORMATION SYSTEMS TOOEE**	455	572	402	333	358	352	274	44
OFFICE TECHNICIAN **								48
PROFESSIONAL DRIVING	224	239	182	147	183	126	144	211
PROJECTS WITH INDUSTRY	40	45	46	55	39	26	14	25
REFRIGERATION & A/C	27	21	20	25	35	40	66	69
WELDING	74	68	80	94	68	43	53	62
UNKNOWN						62	1	
CENTRAL PROCESSING TECHNICIAN	No Longer Offered	15	5					
CHILD CARE	No Longer Offered							
CONSTR TRADES APPRENTICESHIP	No Longer Offered	35	25					
INTERNET TECH	No Longer Offered				8	13	3	
JTPA SUMMER YOUTH	No Longer Offered	126	192	269	284	115		
LINE COOK (SORT CENTER)	No Longer Offered			11	13	6		
MACHINIST	No Longer Offered			12				
MICROCOMPUTER SUPPORT & SERVICE	No Longer Offered			69	67	73	83	
NURSE ASSISTANT SKILLS TEST	No Longer Offered	574	731	826	790	1002	851	694
NURSE ASSISTANT WRITTEN TEST	No Longer Offered	2	1	1				
PRODUCTION MACHINIST	No Longer Offered	13	20	9	9	5		
PROF DRIVING CDL ROAD TEST	No Longer Offered	52	1	6				
RESILIENT FLOOR COVERING	No Longer Offered	21	18	9				
TELMETRY TECHNICIAN	No Longer Offered			14	4			
YOUTH IN CUSTODY - SCHOOL TO CAREERS	No Longer Offered		15	50	122	22		
TOTALS	2729	3105	3226	3312	3549	3341	2733	1804

** Existing program(s) broken out for FY 03/04

* New programs starting FY 03/04

TABLE 37.
SKILLS CENTER
STUDENT INFORMATION JULY 1, 2003 THROUGH JUNE 30, 2004

	FEMALE	MALE	GENDER NOT REPORTED	TOTAL NUMBER	% OF TOTAL
ETHNICITY					
Caucasian				1113	61.7%
Hispanic				336	18.6%
Unknown				122	6.8%
Asian				97	5.4%
Black				65	3.6%
Native American				69	3.8%
Pacific Islander				2	0.1%
Totals				1804	100.0%
GENDER					
Female	868			868	48.1%
Male		922		922	51.1%
Gender Not Reported			14	14	0.8%
Totals	868	922	14	1804	100.0%
TRAINING STATUS					
Completed Training Objectives	500	499	5	1004	55.7%
Left Prior to Completing Training Objectives	324	365	5	694	38.5%
Continued Training	44	58	4	106	5.8%
Totals	868	922	14	1804	100.0%
STUDENTS RECEIVING ASSISTANCE (1,804 Total Surveyed)					
Aid to Families with Dependent Children	14	2		16	0.9%
Supplemental Security Income	26	21		47	2.6%
Unemployment Insurance	36	43		79	4.4%
Social Security Disability	15	15		30	1.7%
Totals	91	81		172	9.6%
SINGLE HEADS OF HOUSEHOLD (1,804 Total Surveyed)					
Total	184	32	1	217	12.0%
DISPLACED HOMEMAKERS (1,804 Total Surveyed)					
Total	192	100	1	293	16.2%
STUDENTS WITH LIMITED ENGLISH PROFICIENCY (1,804 Total Surveyed)					
Total	178	141	3	322	17.8%
STUDENTS AVERAGE AGE					
Average	35	36	37		

TABLE/GRAPH 38.

**SALT LAKE COMMUNITY COLLEGE
SKILLS CENTER
2003-2004 TOTAL REVENUE SOURCES AND EXPENDITURES**

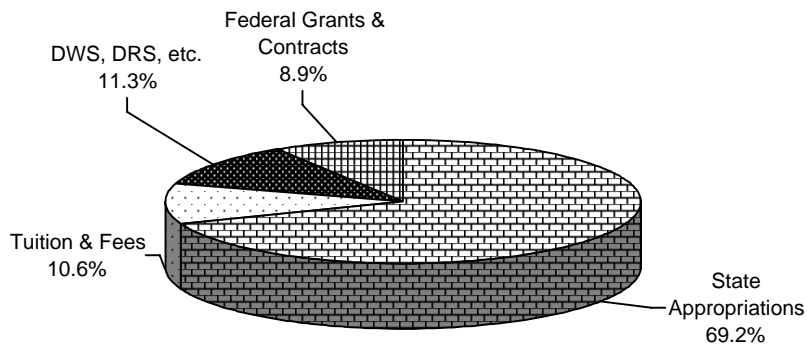
REVENUE SOURCES

State Appropriations	\$ 3,883,900
Tuition & Fees	592,938
DWS, DRS, etc.	633,683
Federal Grants & Contracts	498,524
TOTAL	\$ 5,609,045

EXPENDITURES

Instruction	\$ 3,162,432
Student Services	1,033,207
Academic Support	199,819
Institutional Support	669,704
Plant Operations	245,089
TOTAL	\$ 5,310,251

**TOTAL REVENUE SOURCES
FY 2003-2004**



**TOTAL EXPENDITURES
FY 2003-2004**

